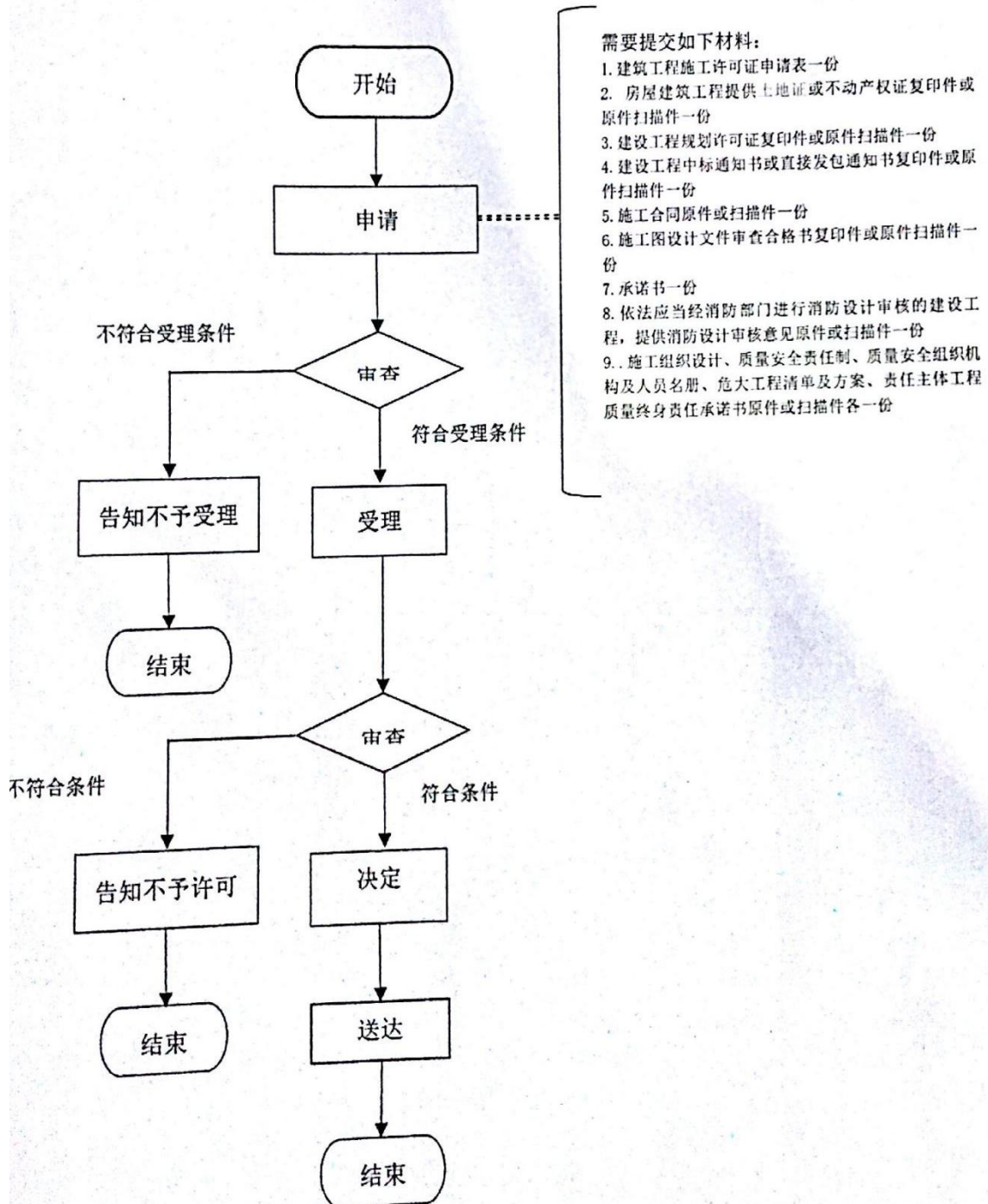
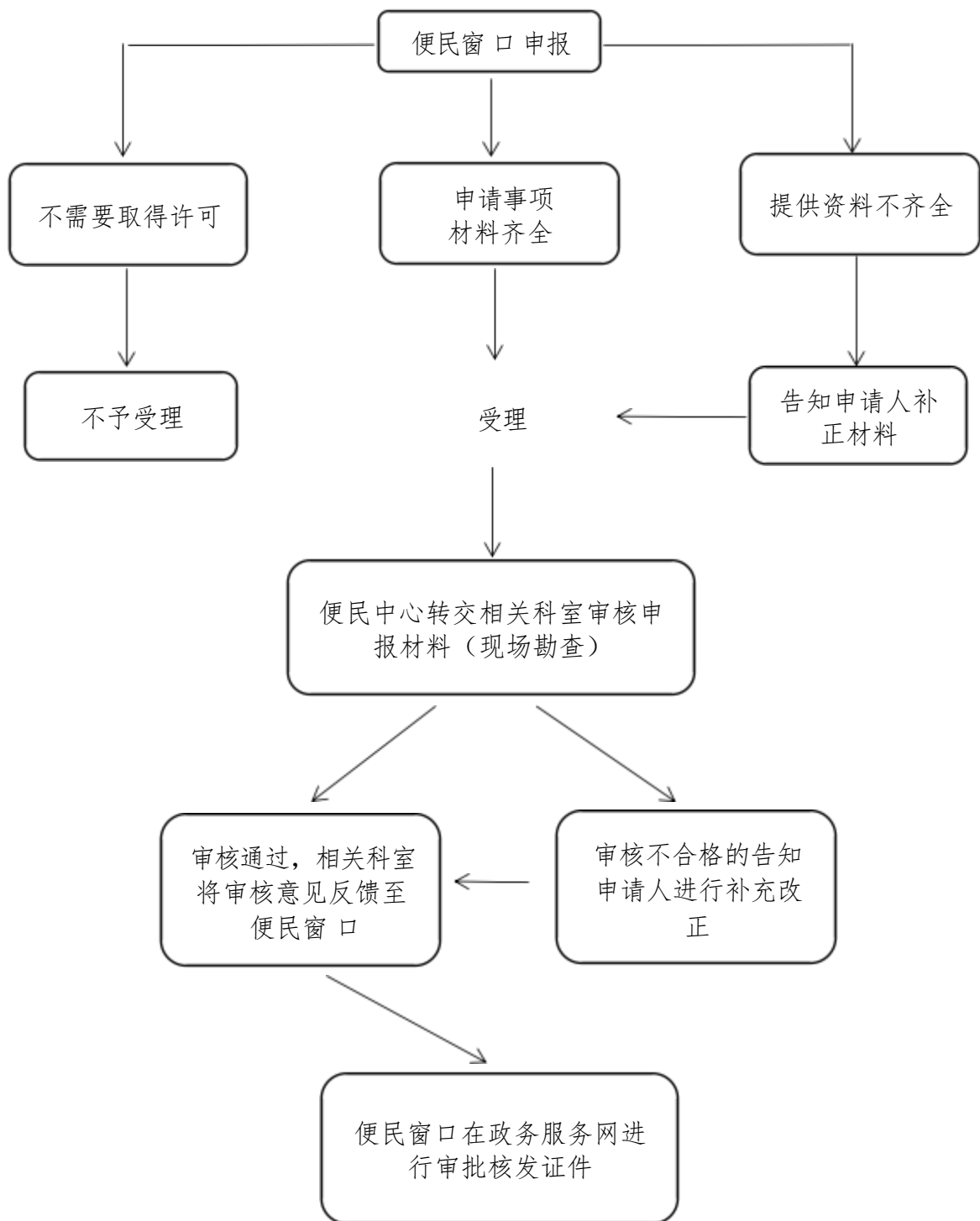


滑县住房和城乡建设局行政职权运行流程图

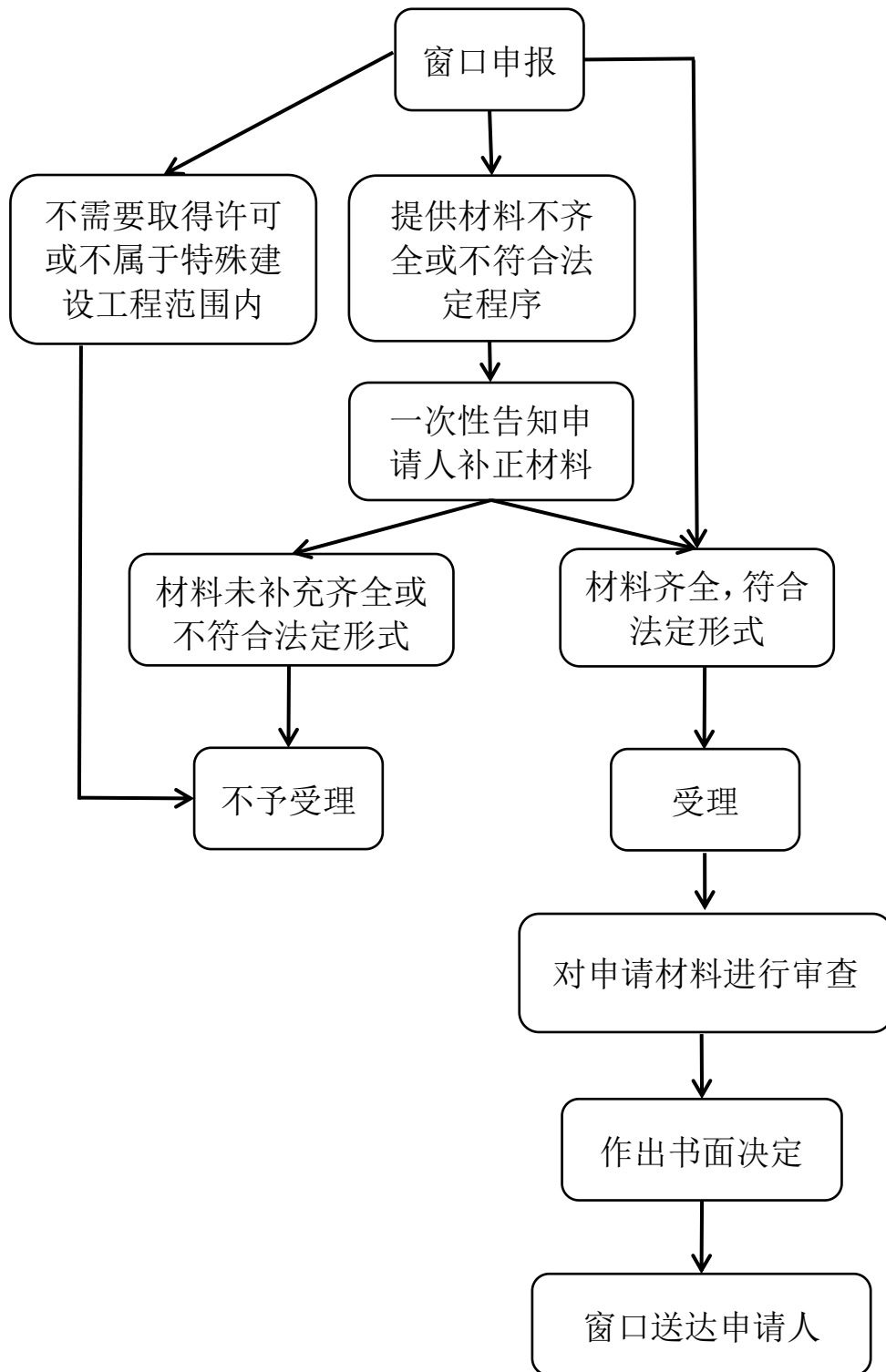
建筑工程施工许可核准流程图



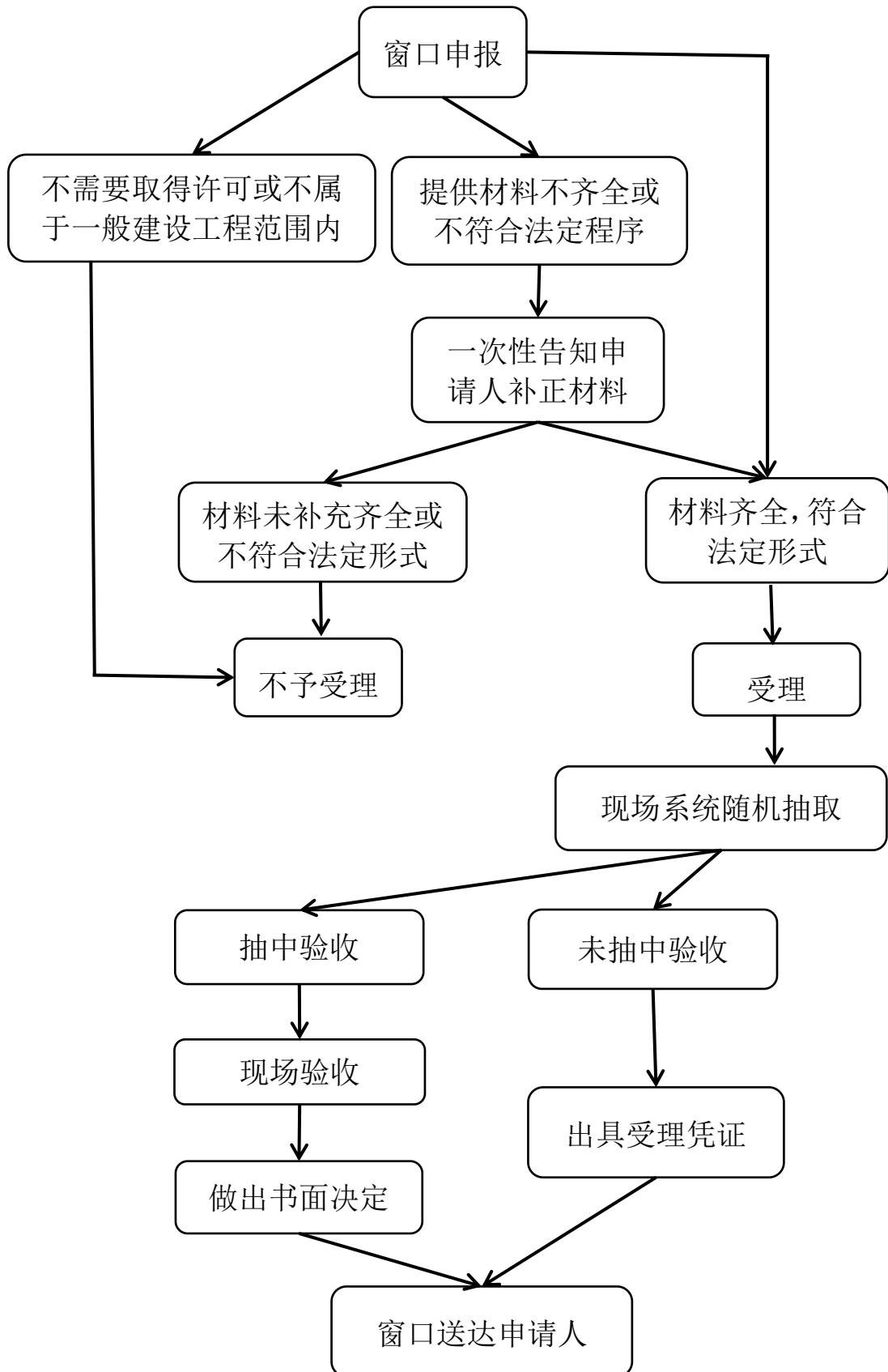
行政许可事项流程图



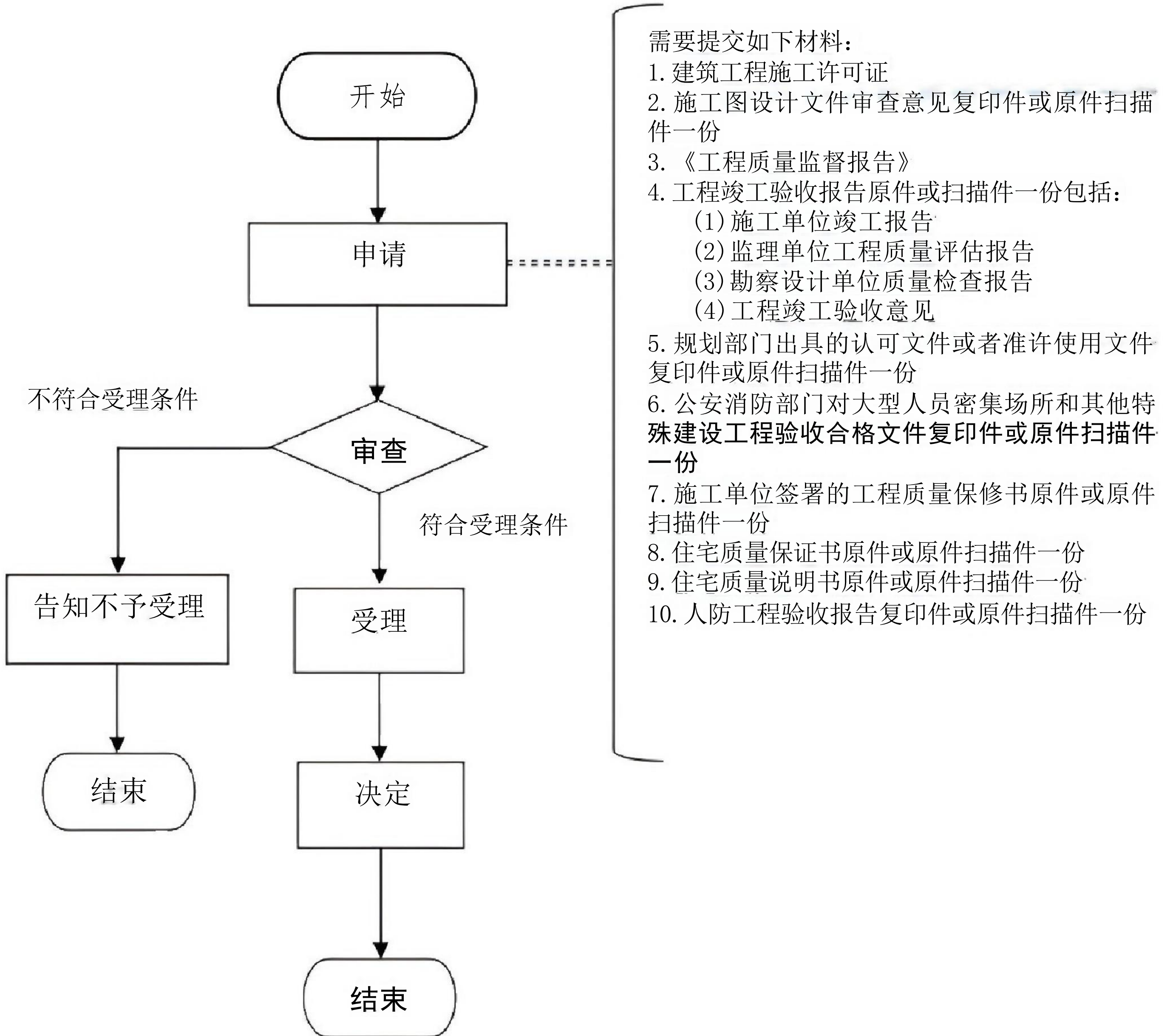
特殊建设工程消防设计审查办理流程



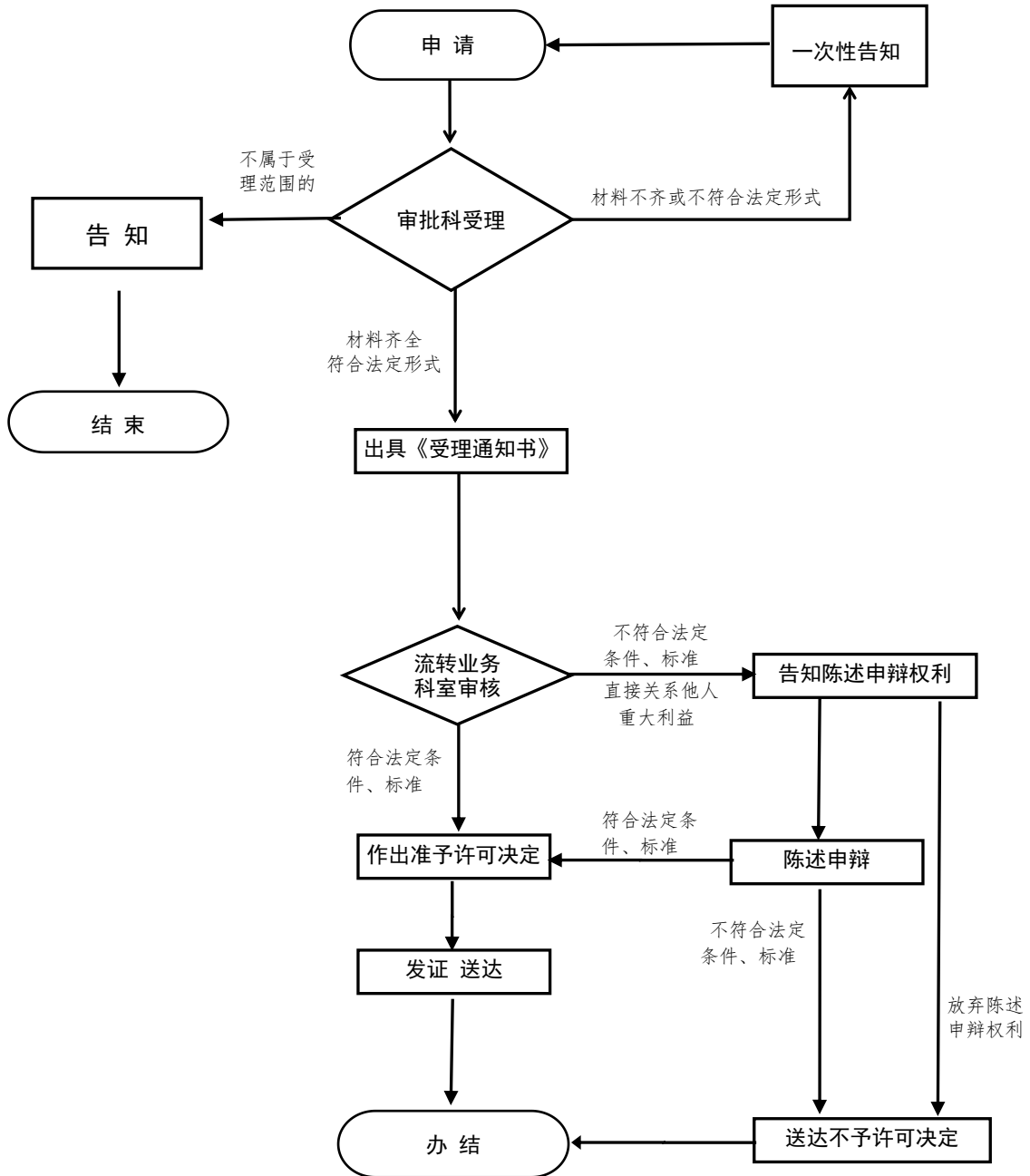
建设工程消防验收备案抽查办理流程



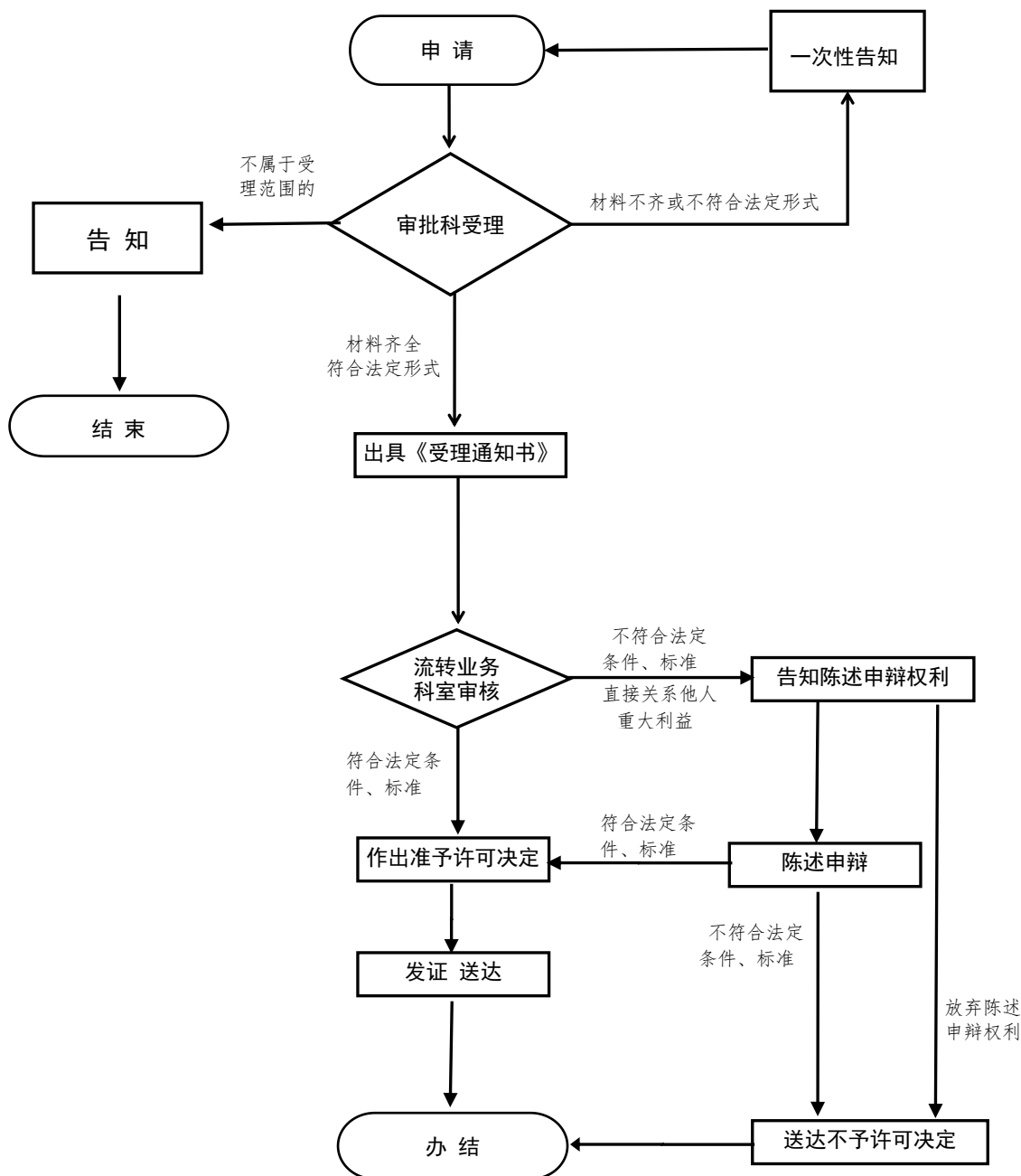
房屋建筑和市政基础设施工程竣工验收备案流程图



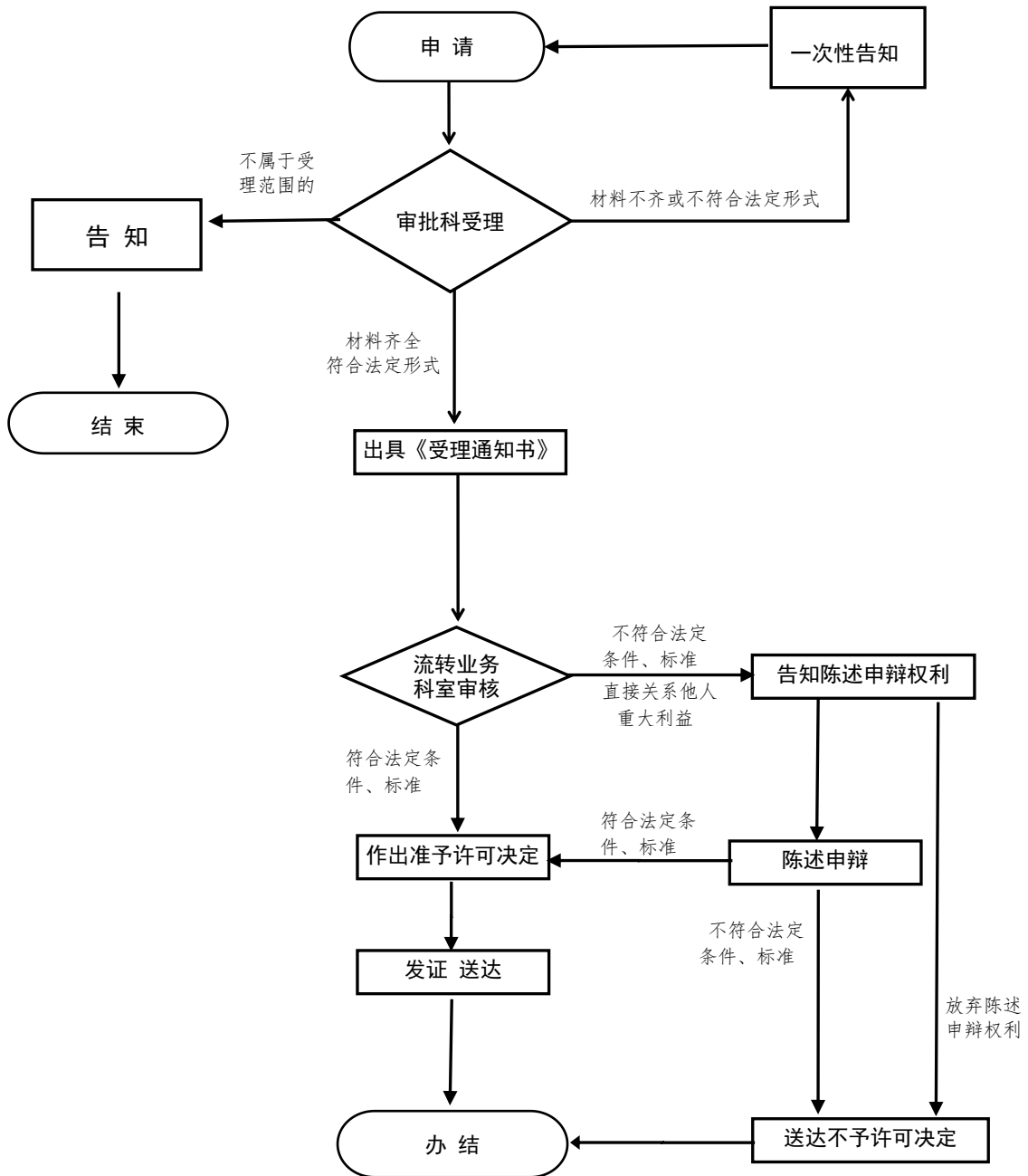
城镇燃气经营许可流程图



瓶装燃气供应站经营许可流程图

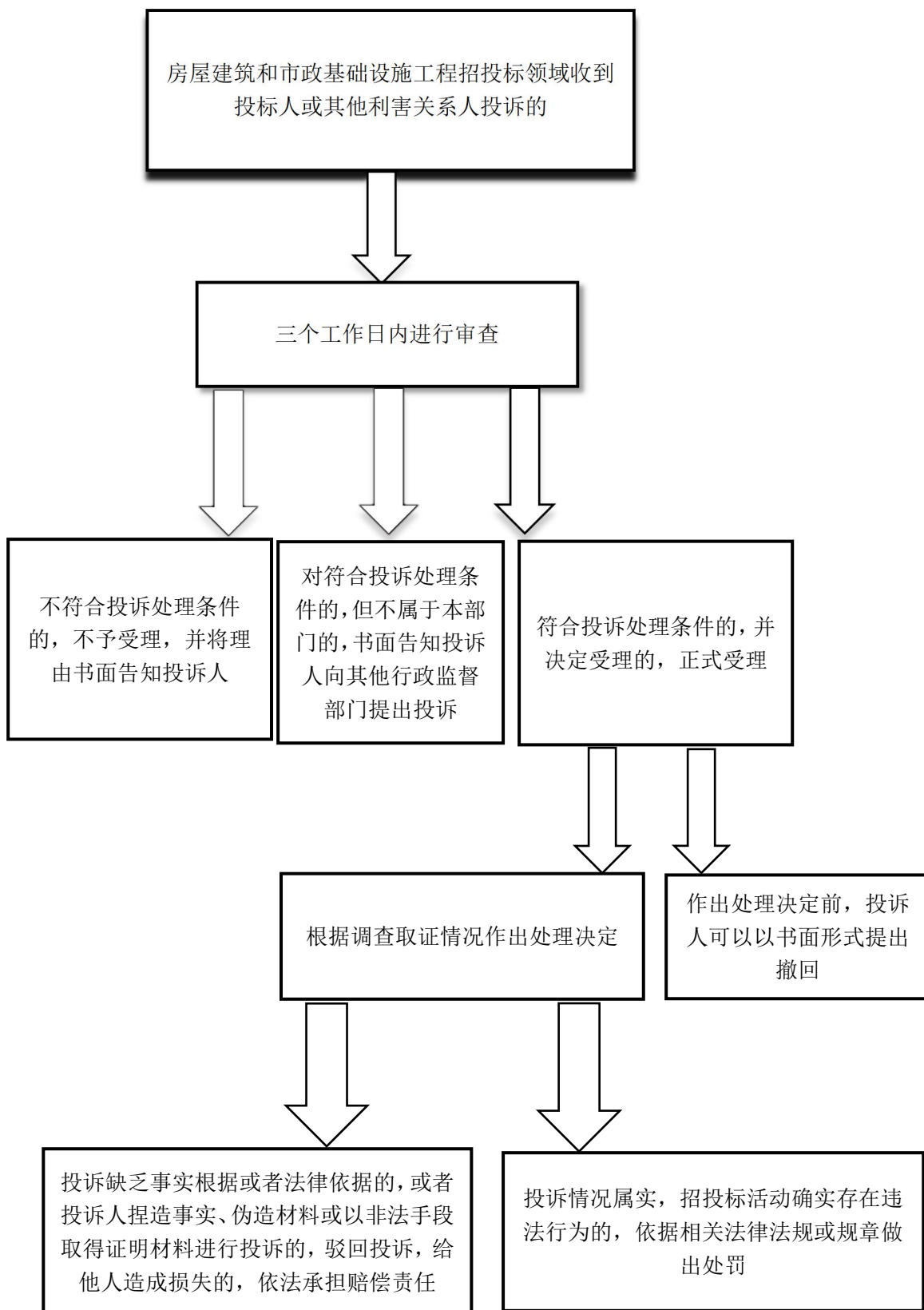


燃气设施改动许可流程图



房屋建筑和市政基础设施工程招投标

受理投诉流程图



污水处理费征收流程图

要求用水户按照《城镇污水处理费征收使用管理办法》规定，
安装计量设备取水

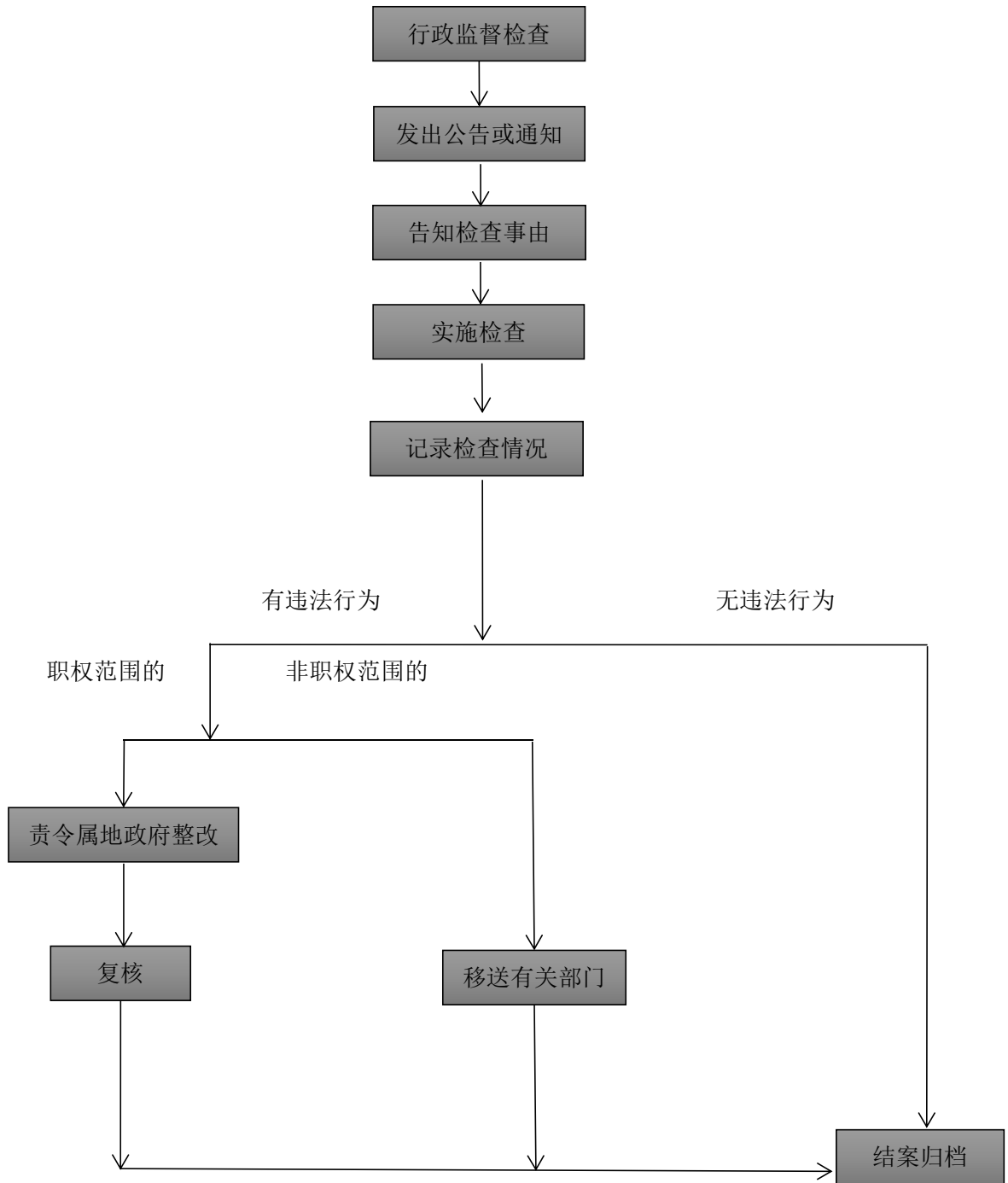
根据用水户计量设备的水量，依据《城镇污水处理费征收使用管理
办法》和滑发改[2017]195号文按月或季度下达《河南省政府非税
收入专用缴款通知书》

用水户根据缴款通知书将污水处理费上缴到滑县财政局非
税收入财政专户

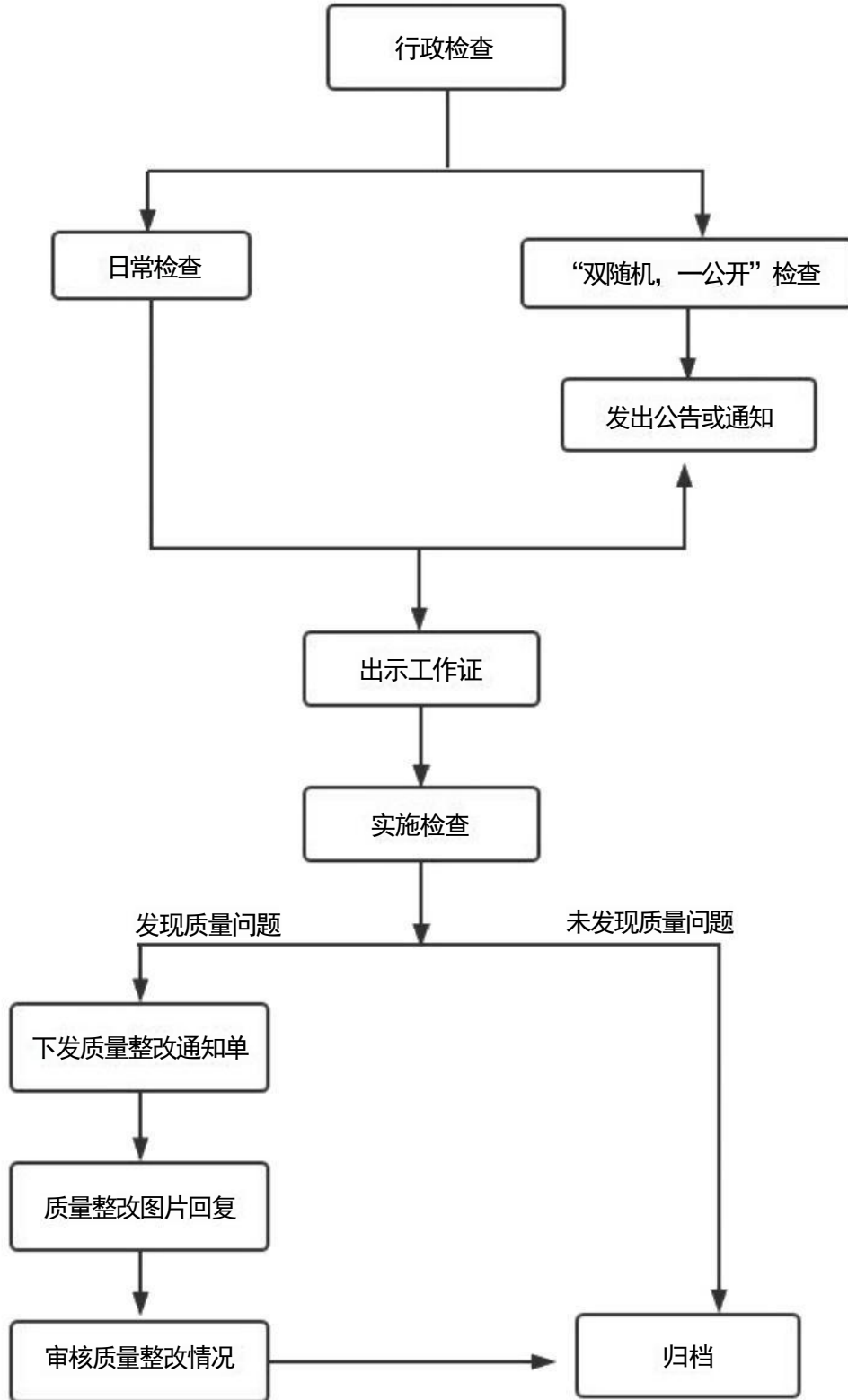
到银行对用水户缴纳污水处理费情况进行确认

对缴纳污水处理费的用户开具《河南省政府非税收入财政票据（电子）》

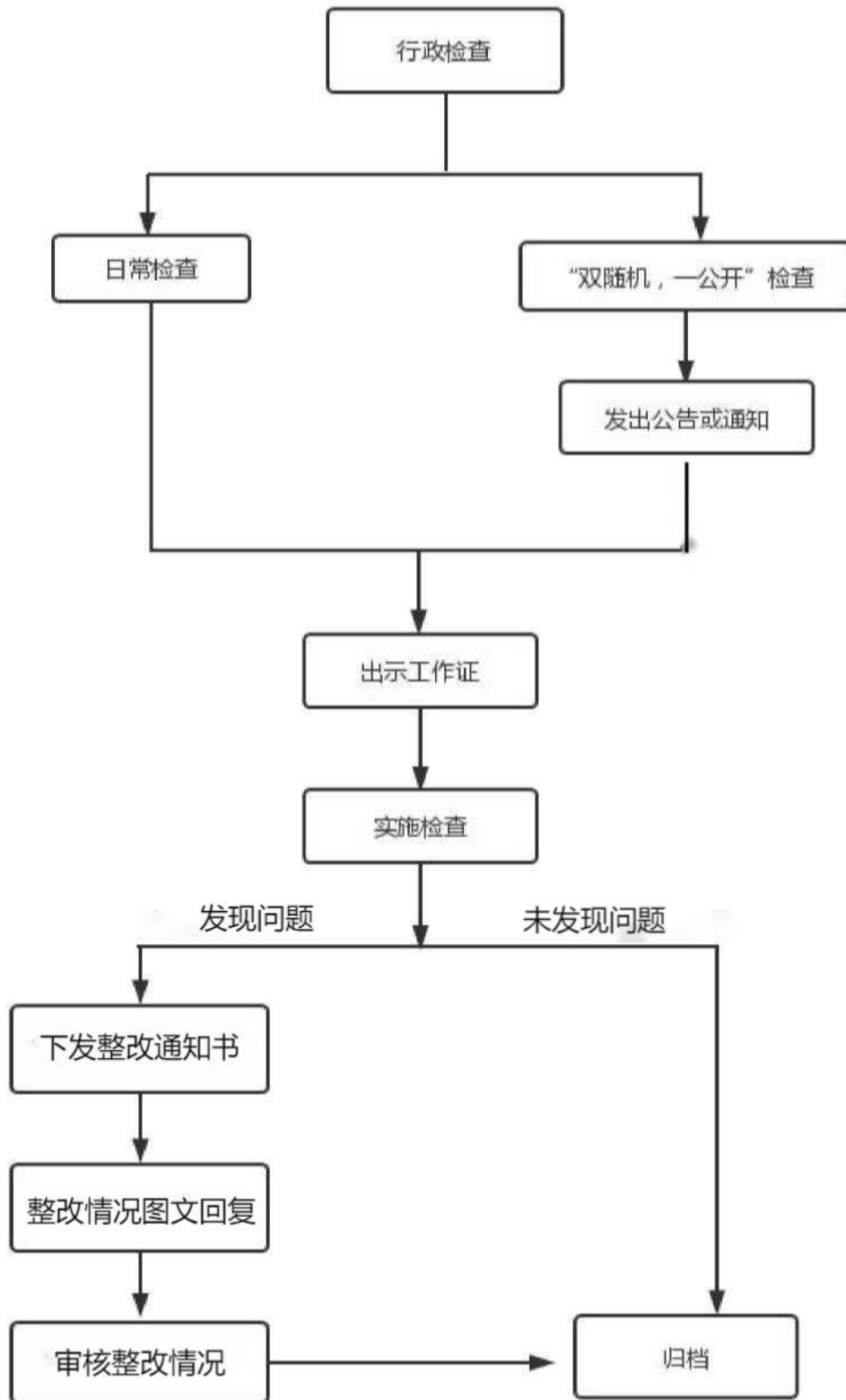
村镇建设管理监督检查流程图



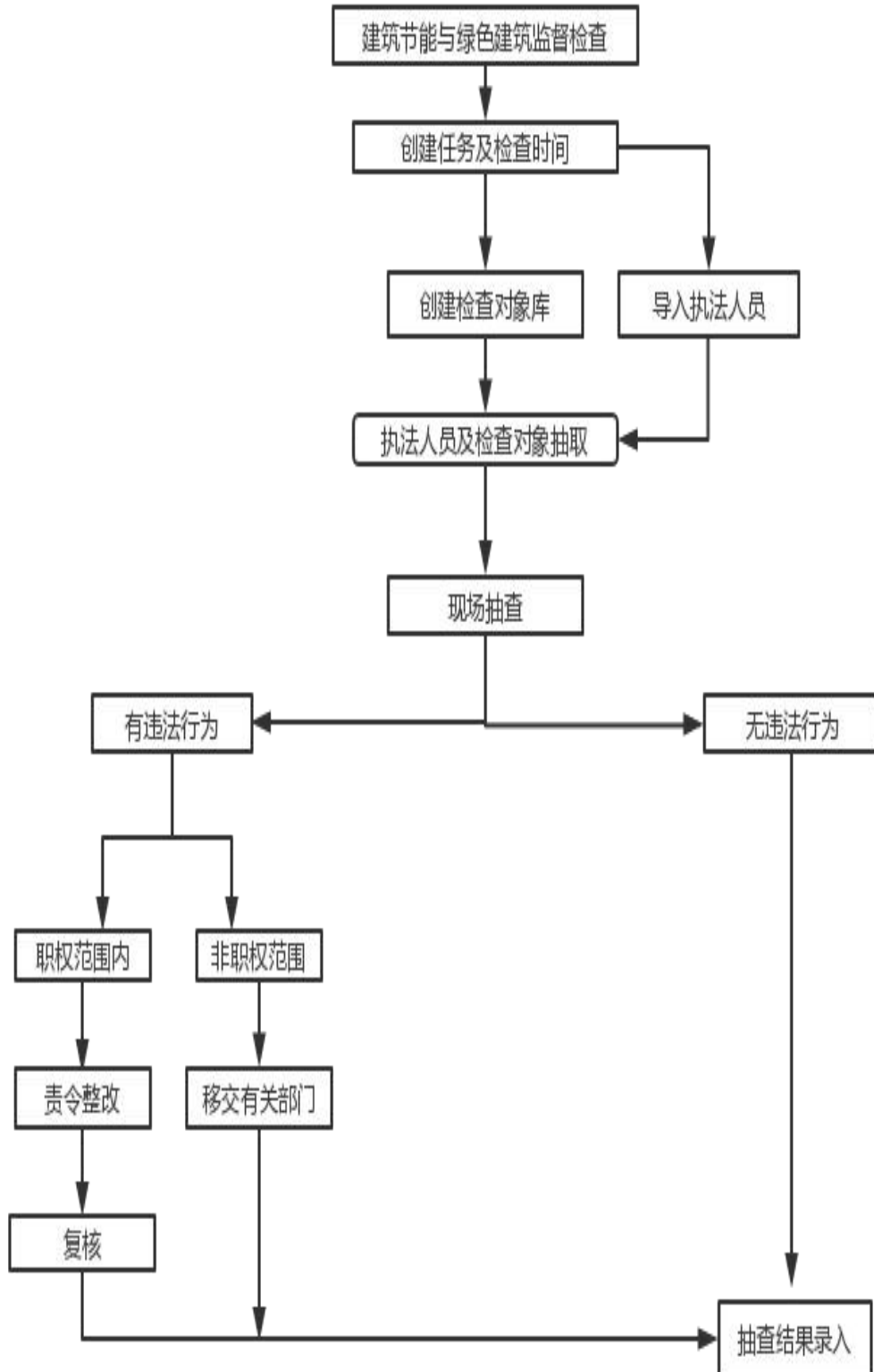
建筑质量行政检查流程



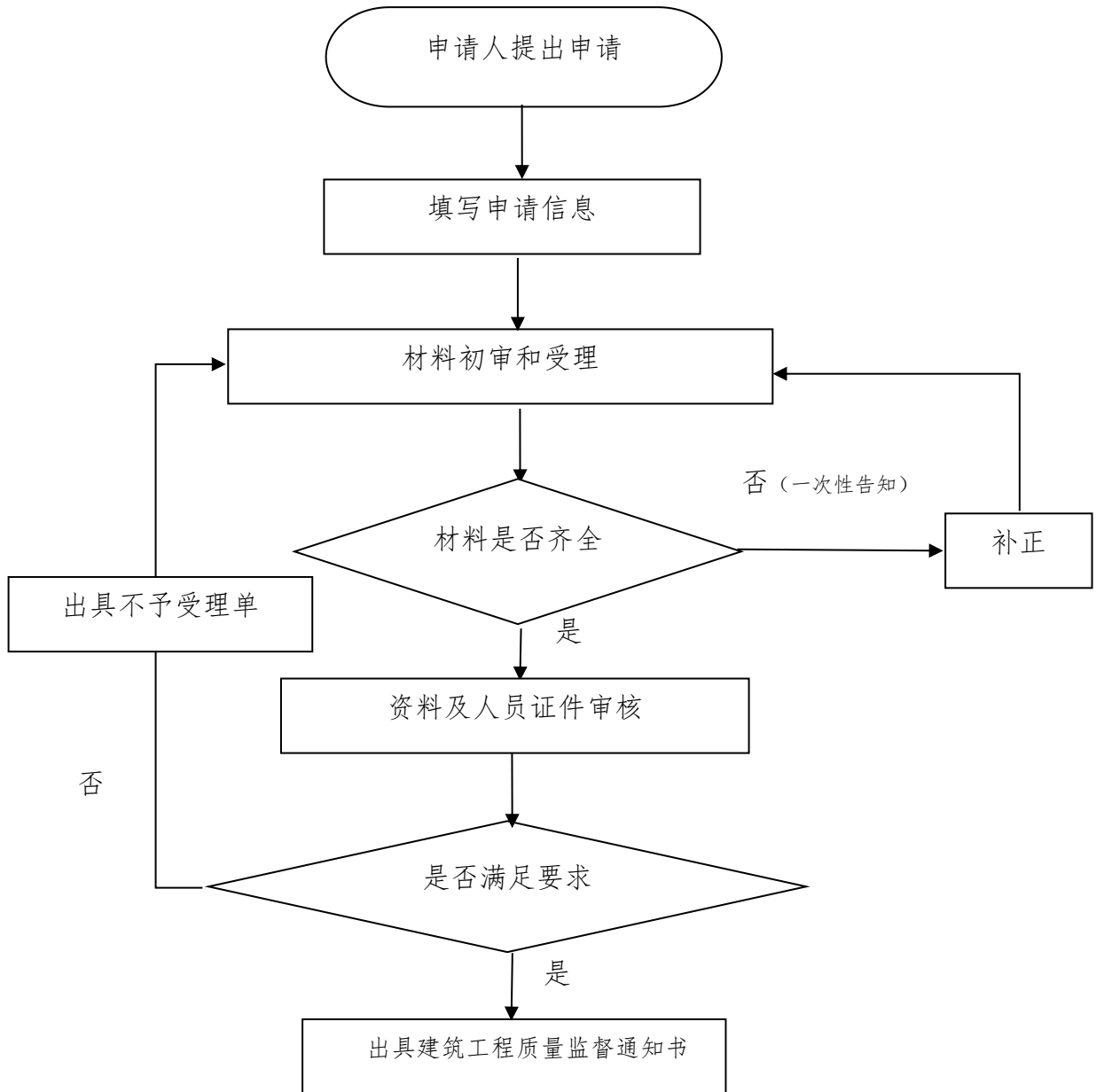
公用事业相关行政检查流程图



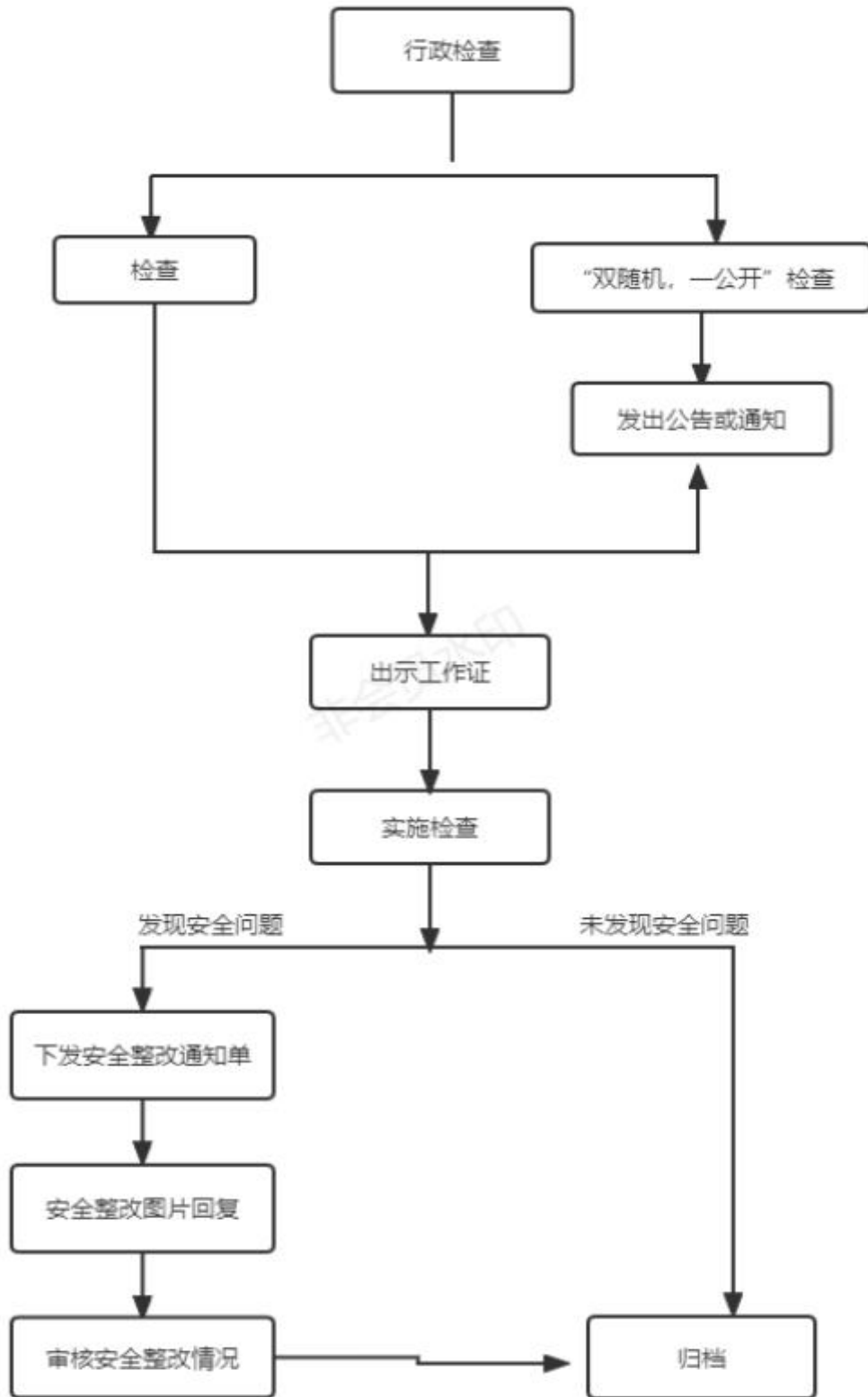
建筑节能“双随机一公开”执法检查流程图



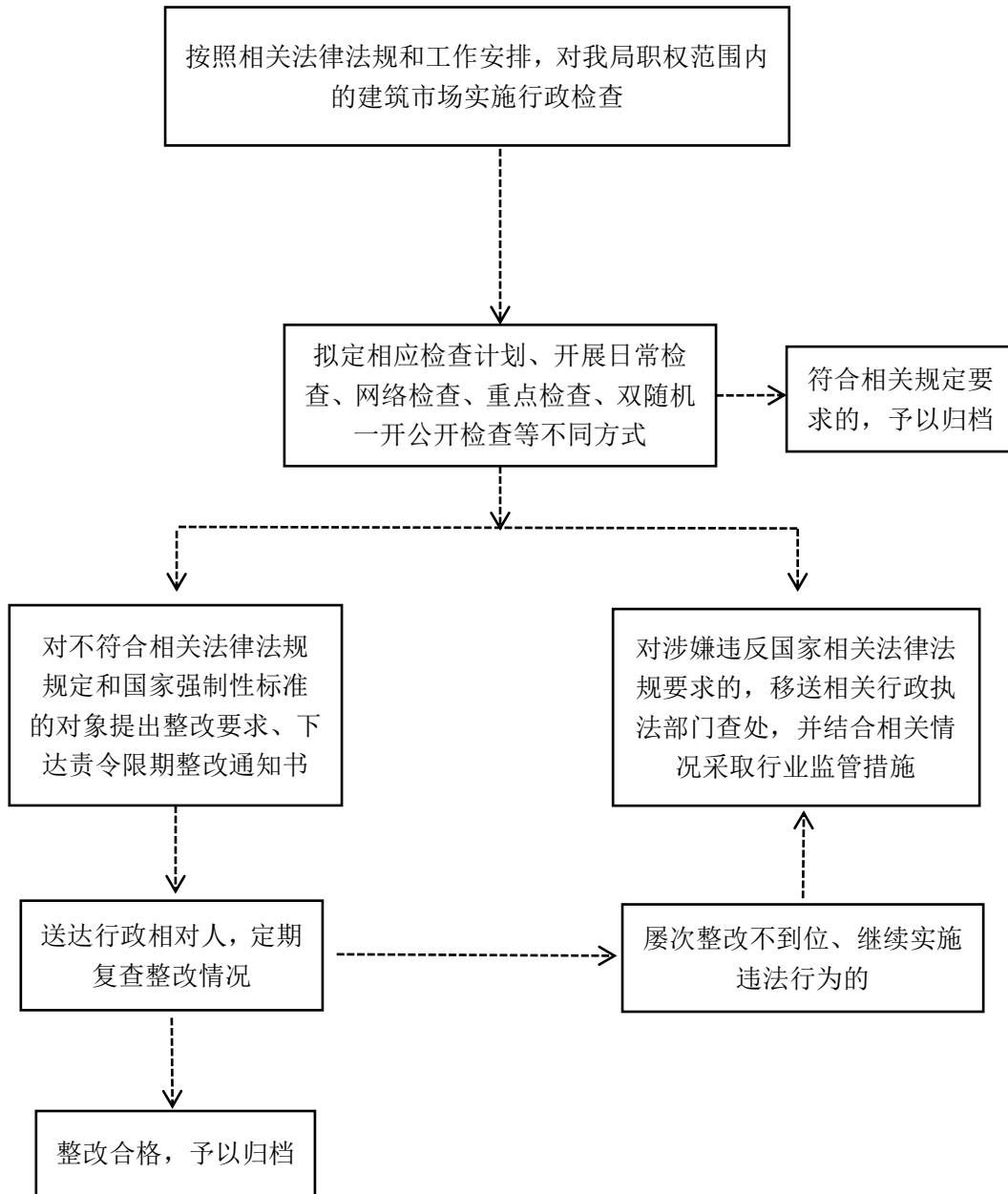
工程质量监督手续备案办理流程图



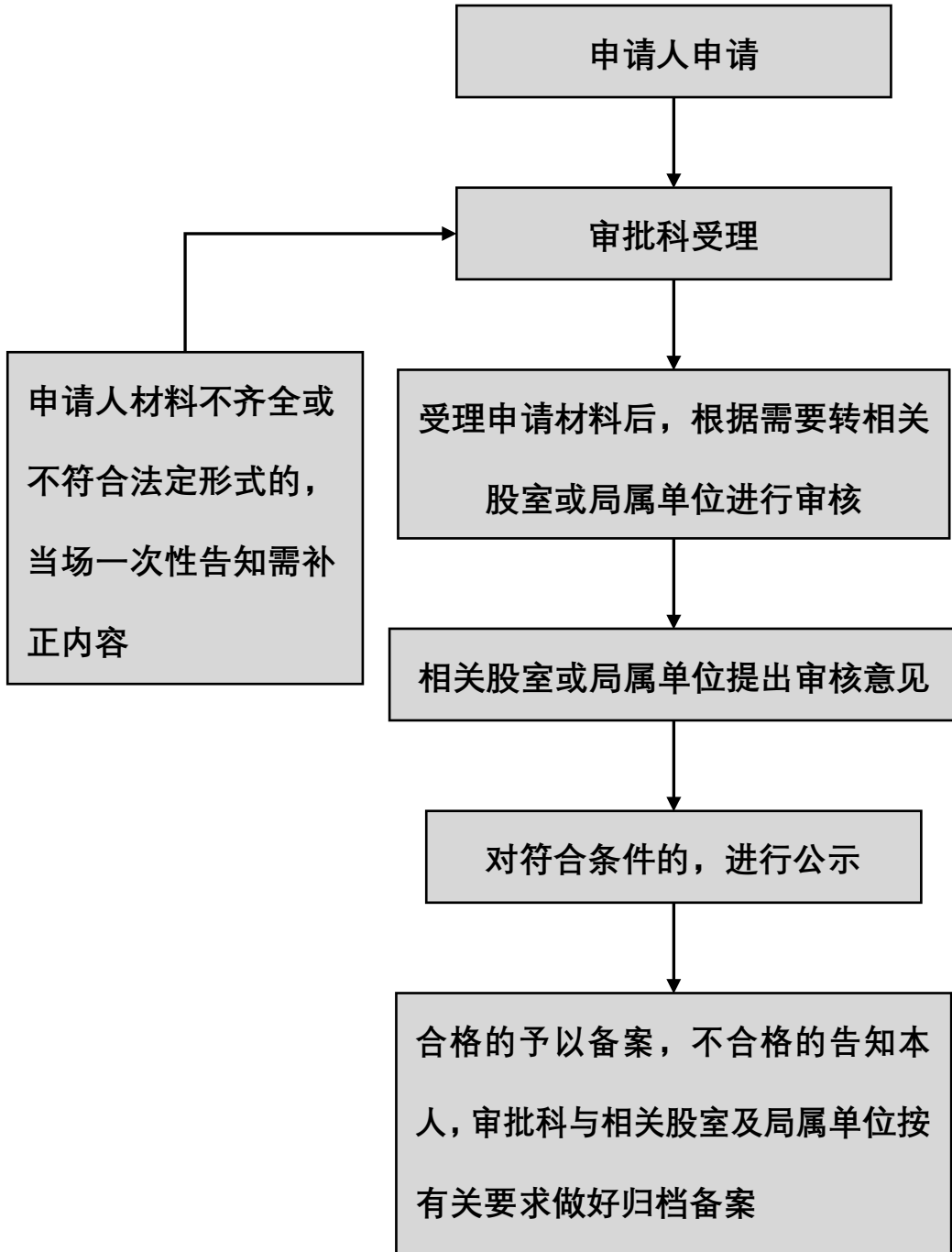
建设安全行政检查流程



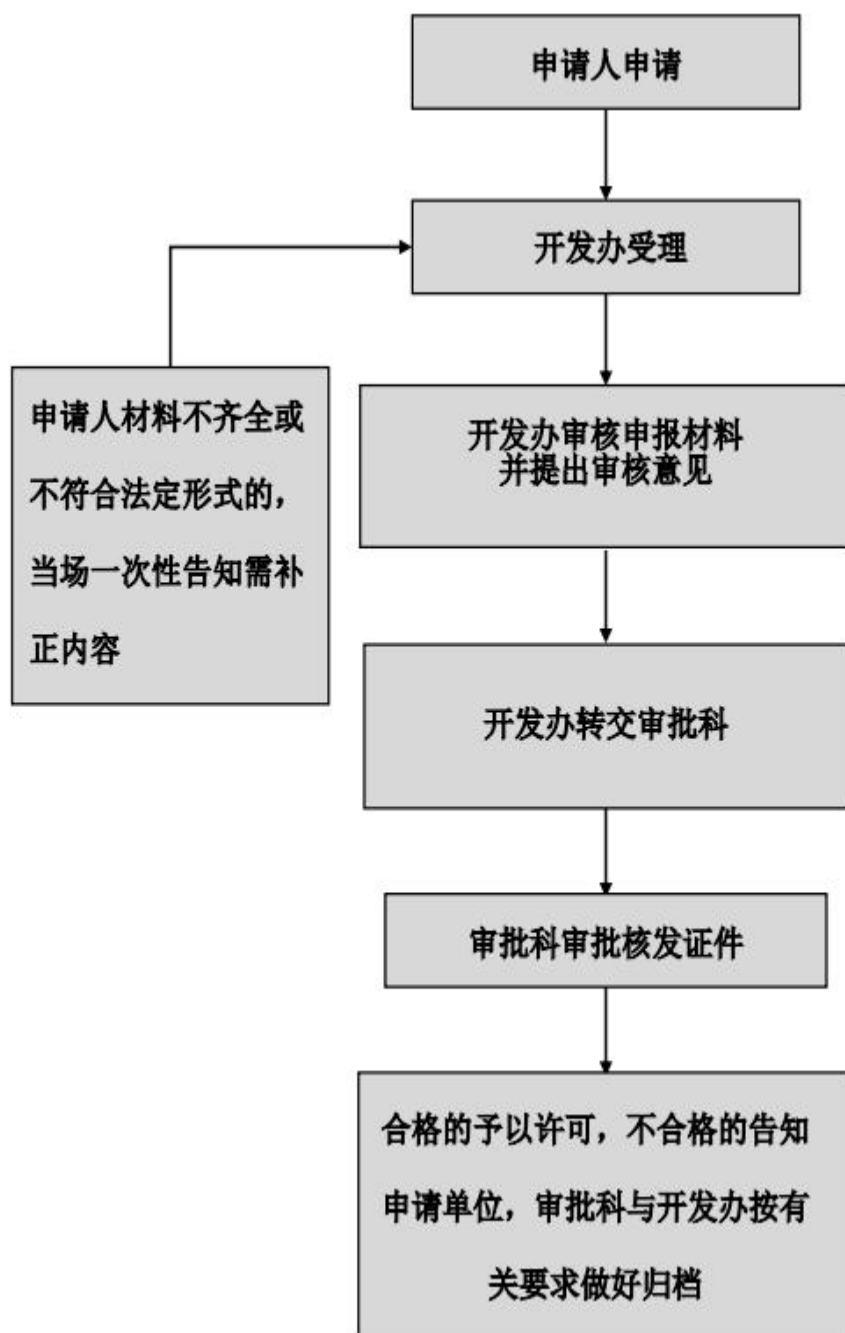
建筑市场行政检查基本流程图



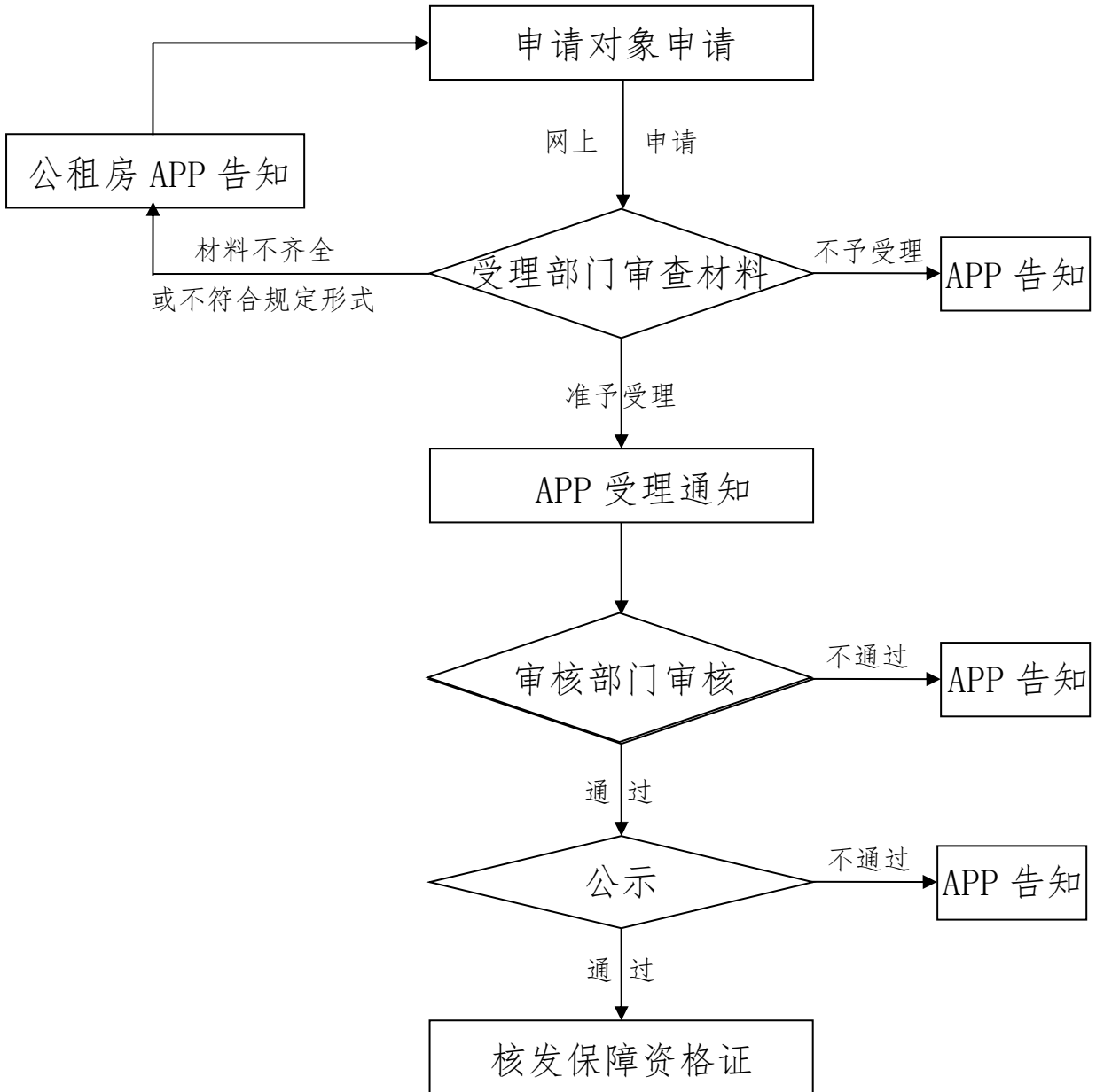
公用事业行政确认简易流程图



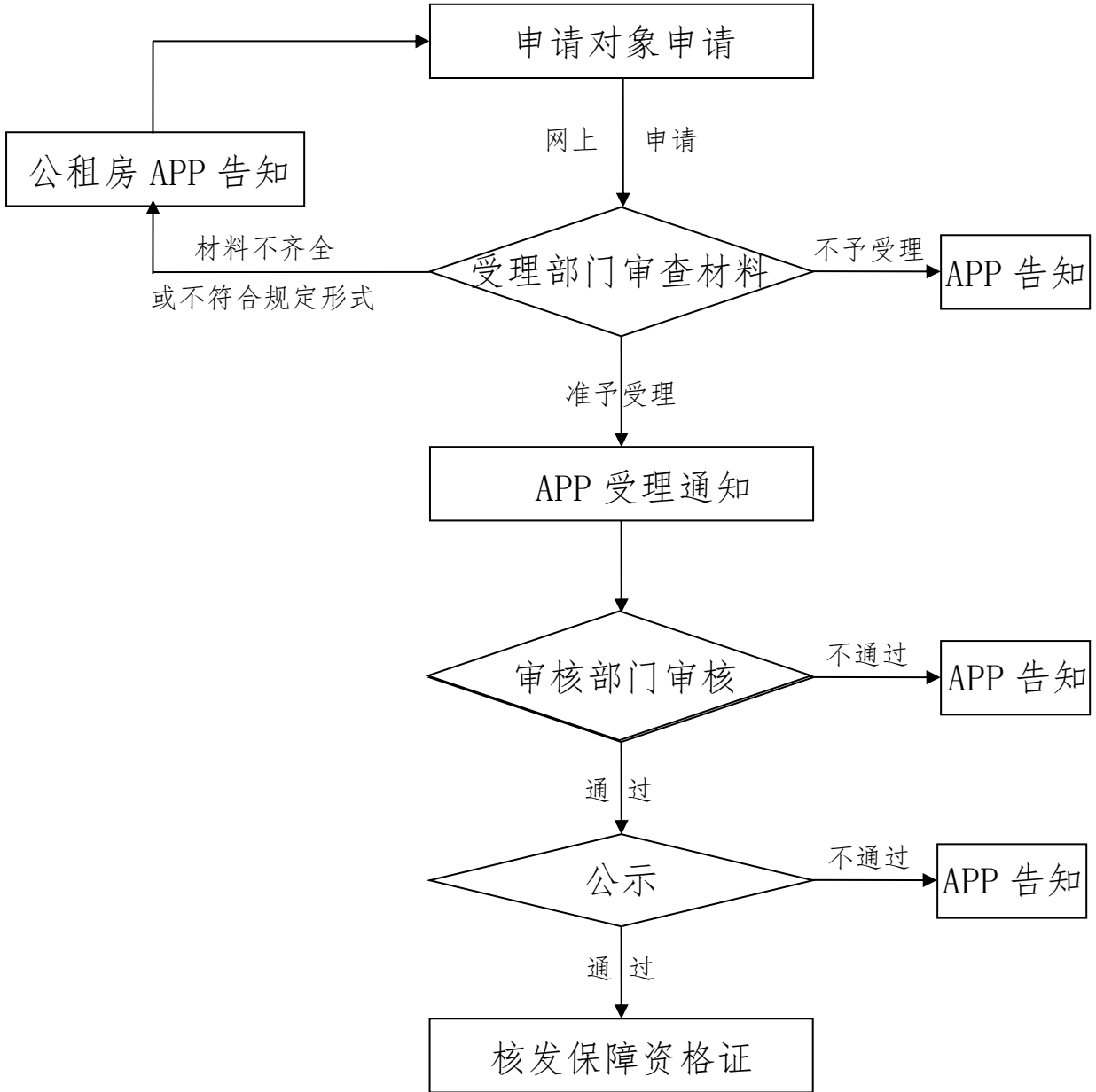
商品房预售许可行政职权运行流程图



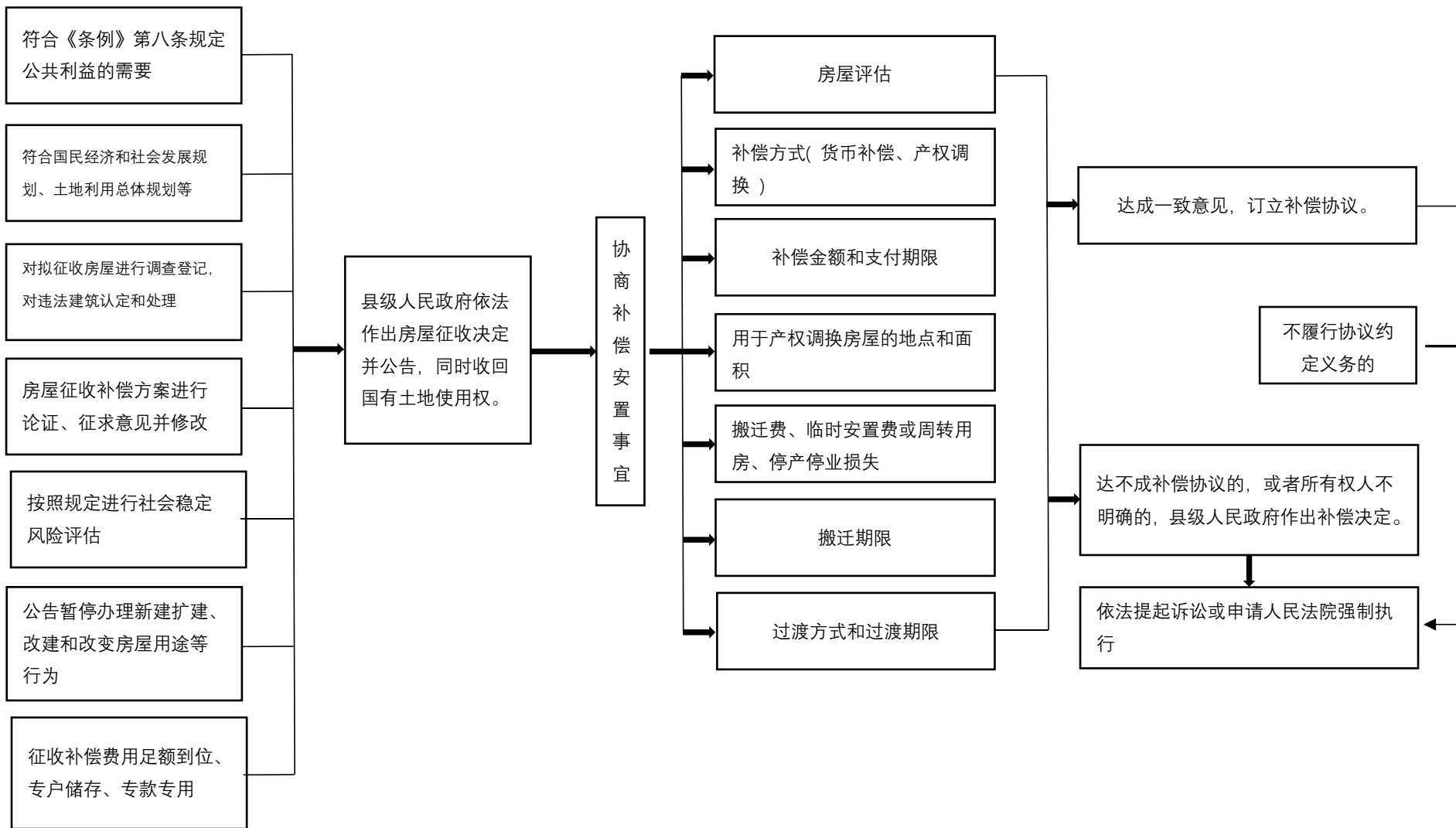
公租房承租资格确认流程图



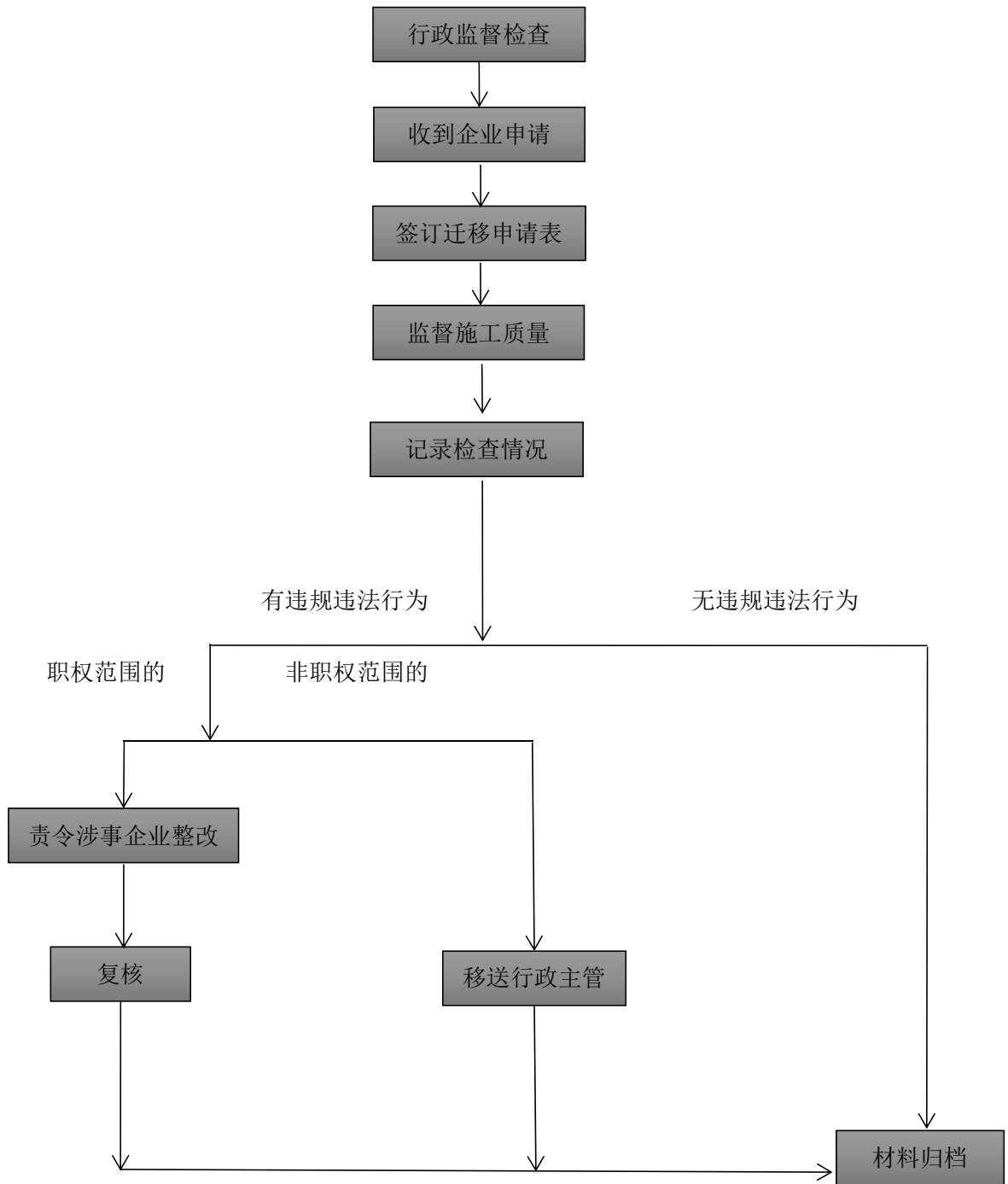
公租房租赁补贴资格核准流程图



滑县国有土地上房屋征收与补偿流程图



城区路灯迁移、拆除管理监督检查流程图



房地产开发企业资质申请核准流程图

