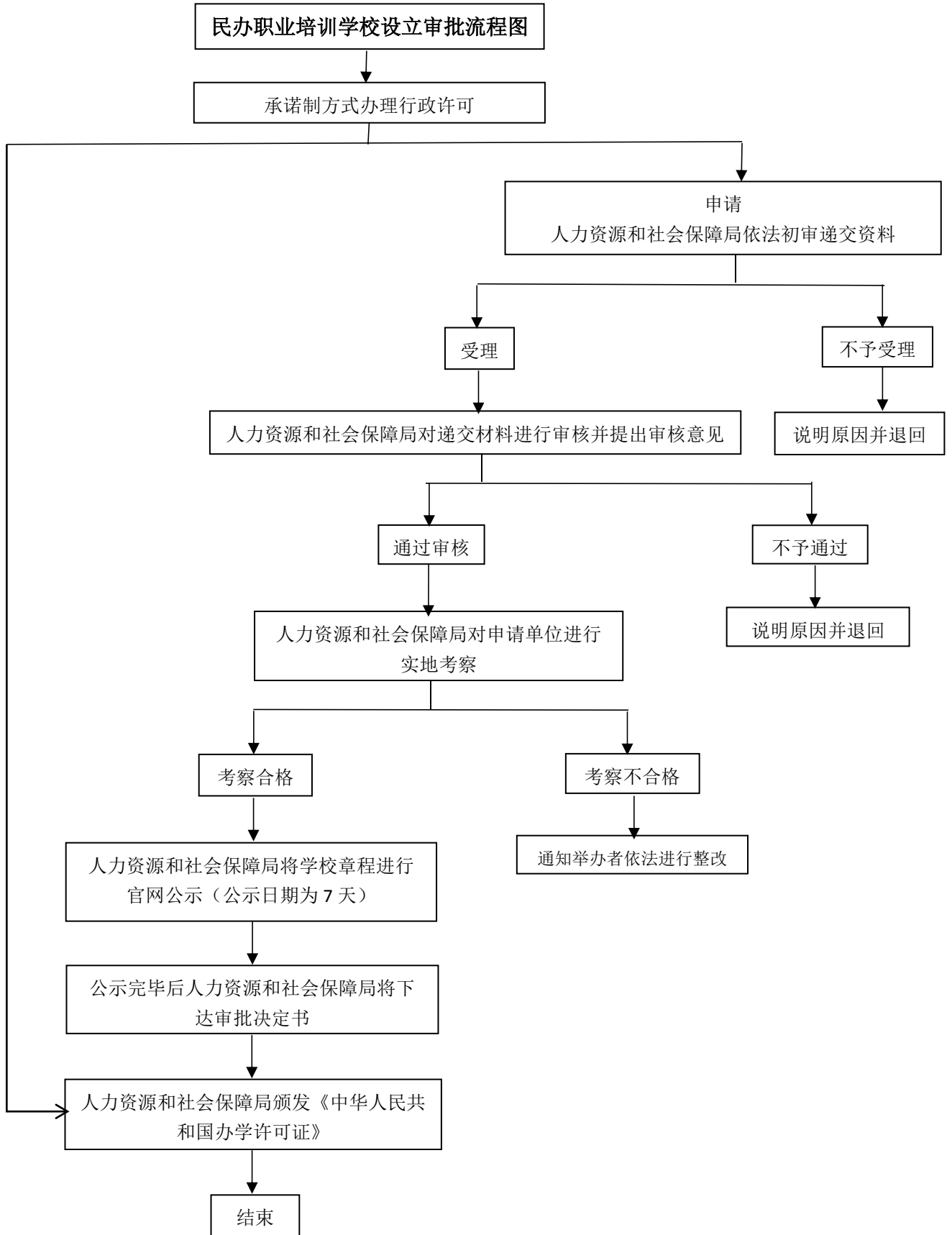
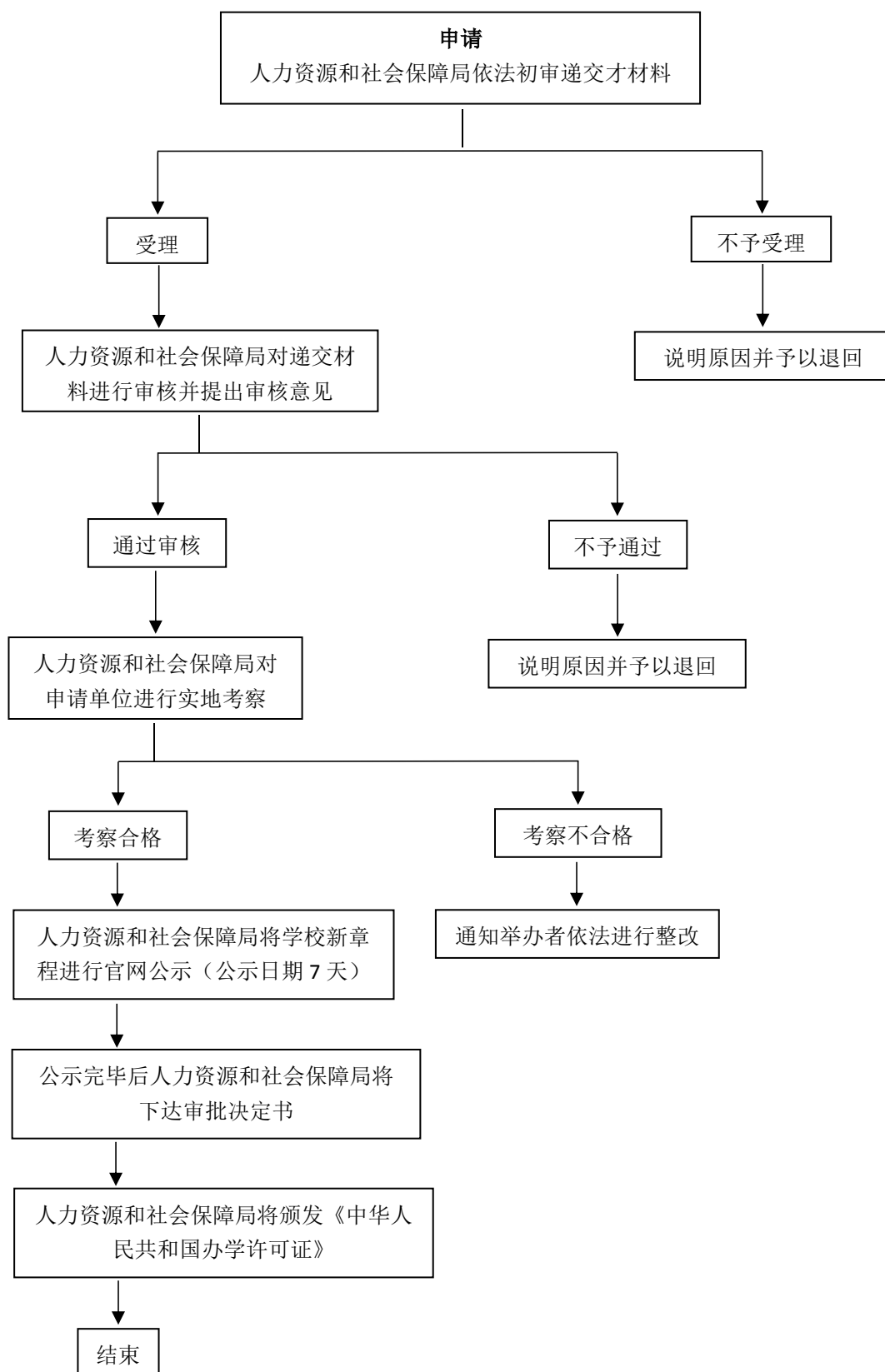


滑县人力资源和社会保障局行政职权运行流程图

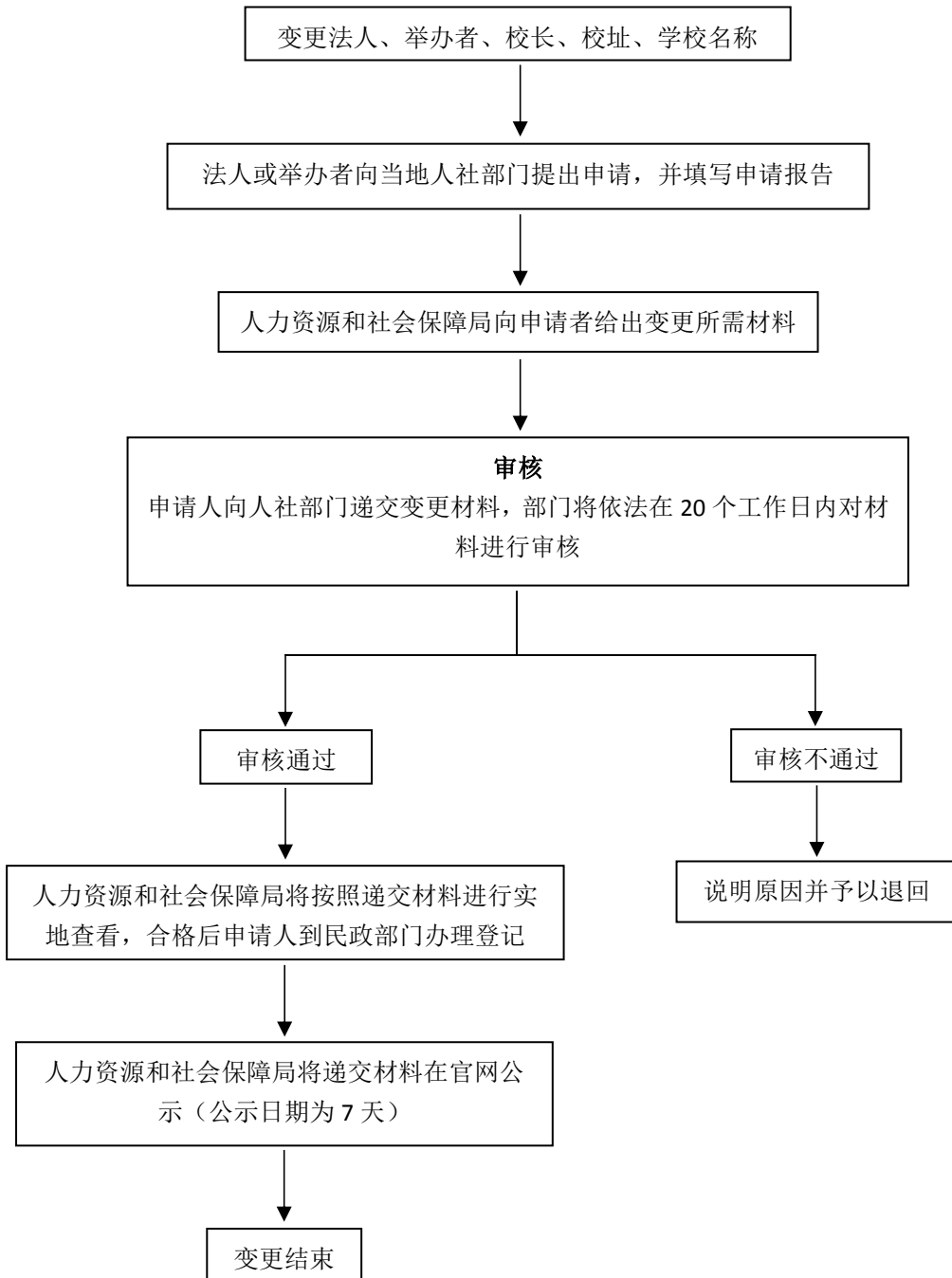
1. 民办职业培训学校设立审批流程图



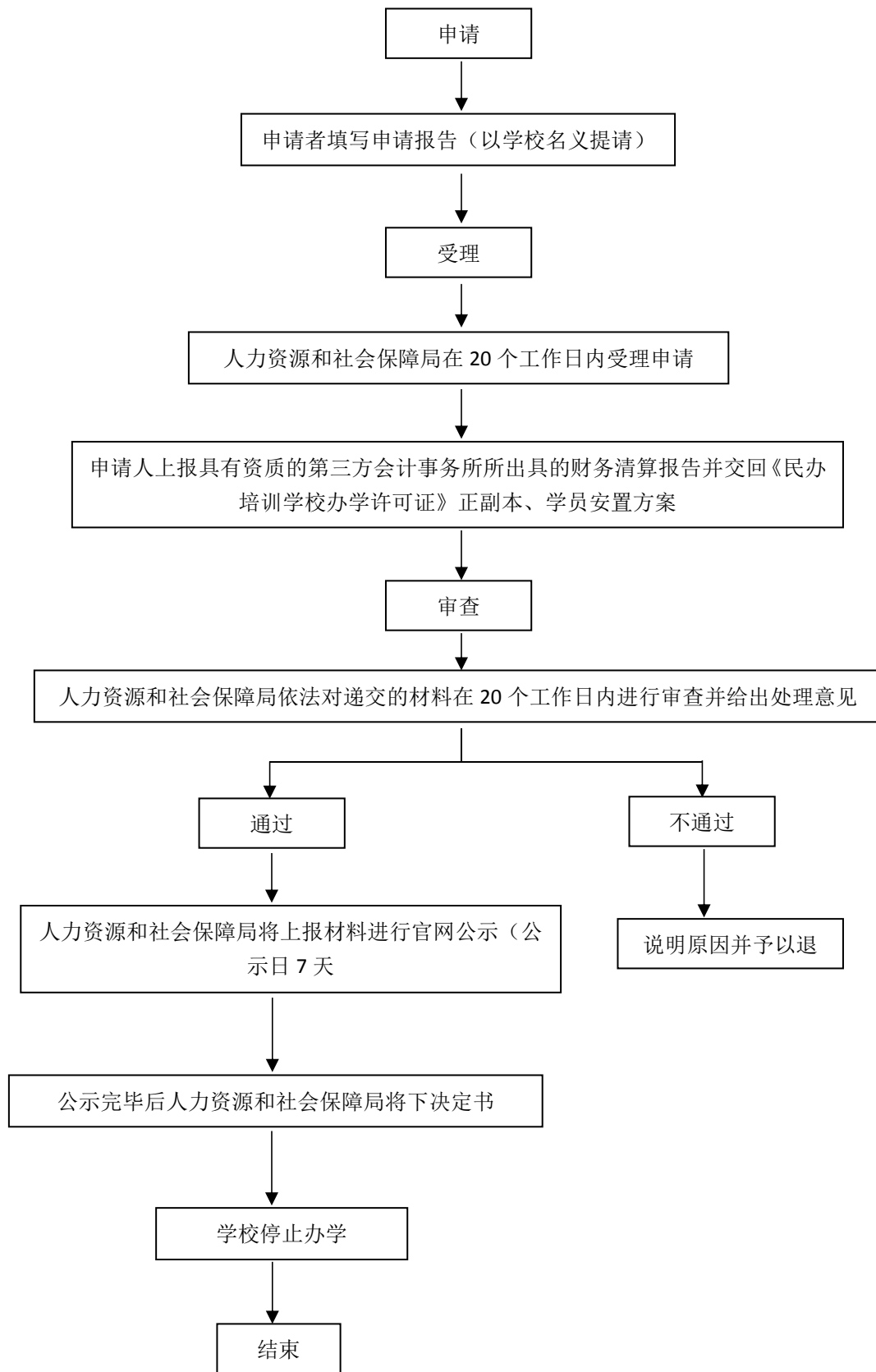
2. 民办职业培训学校分立、合并审批流程图



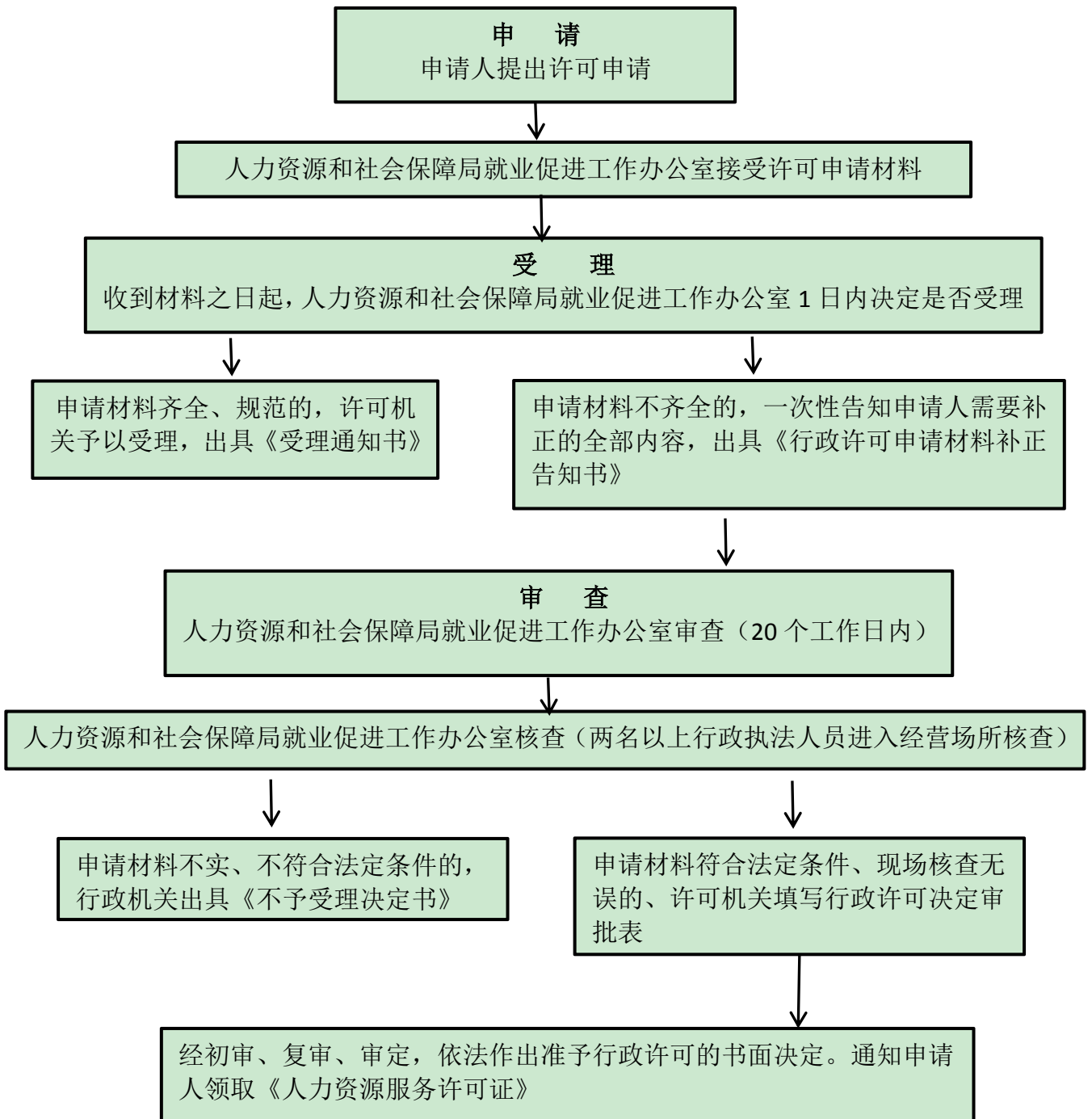
3. 民办职业培训学校变更审批流程



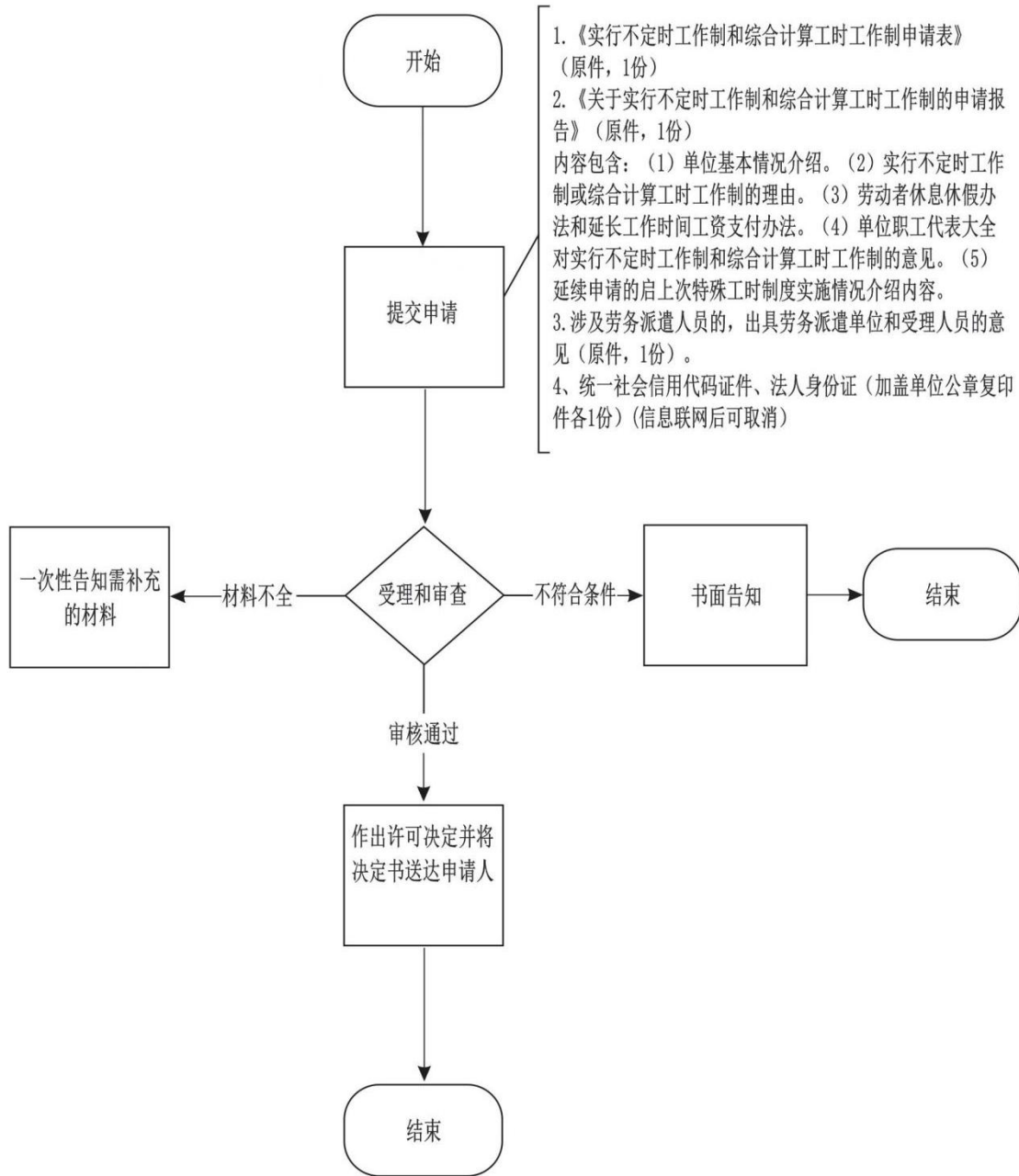
4.民办职业培训学校终止审批流程图



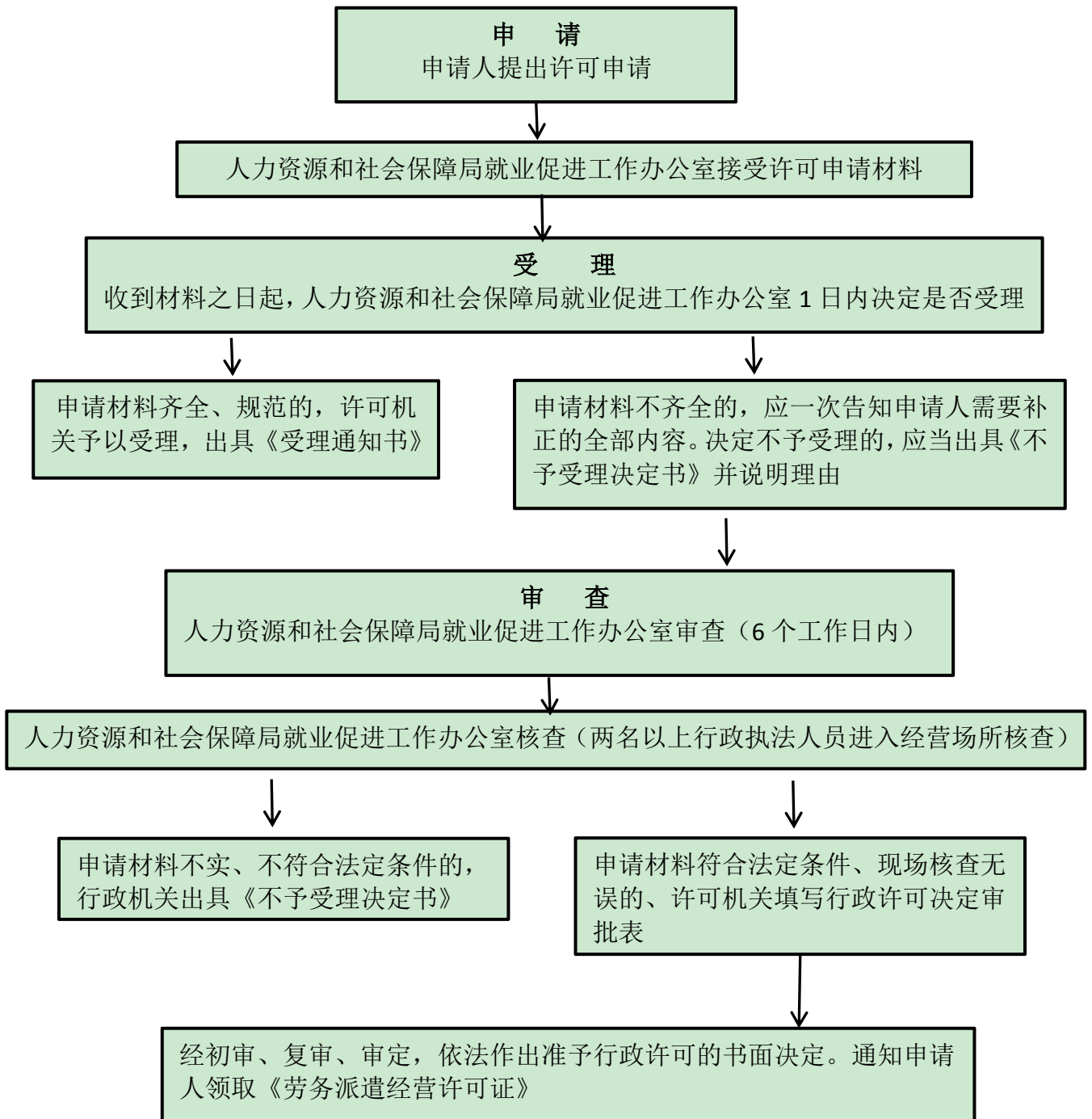
5.人力资源服务许可审批流程图



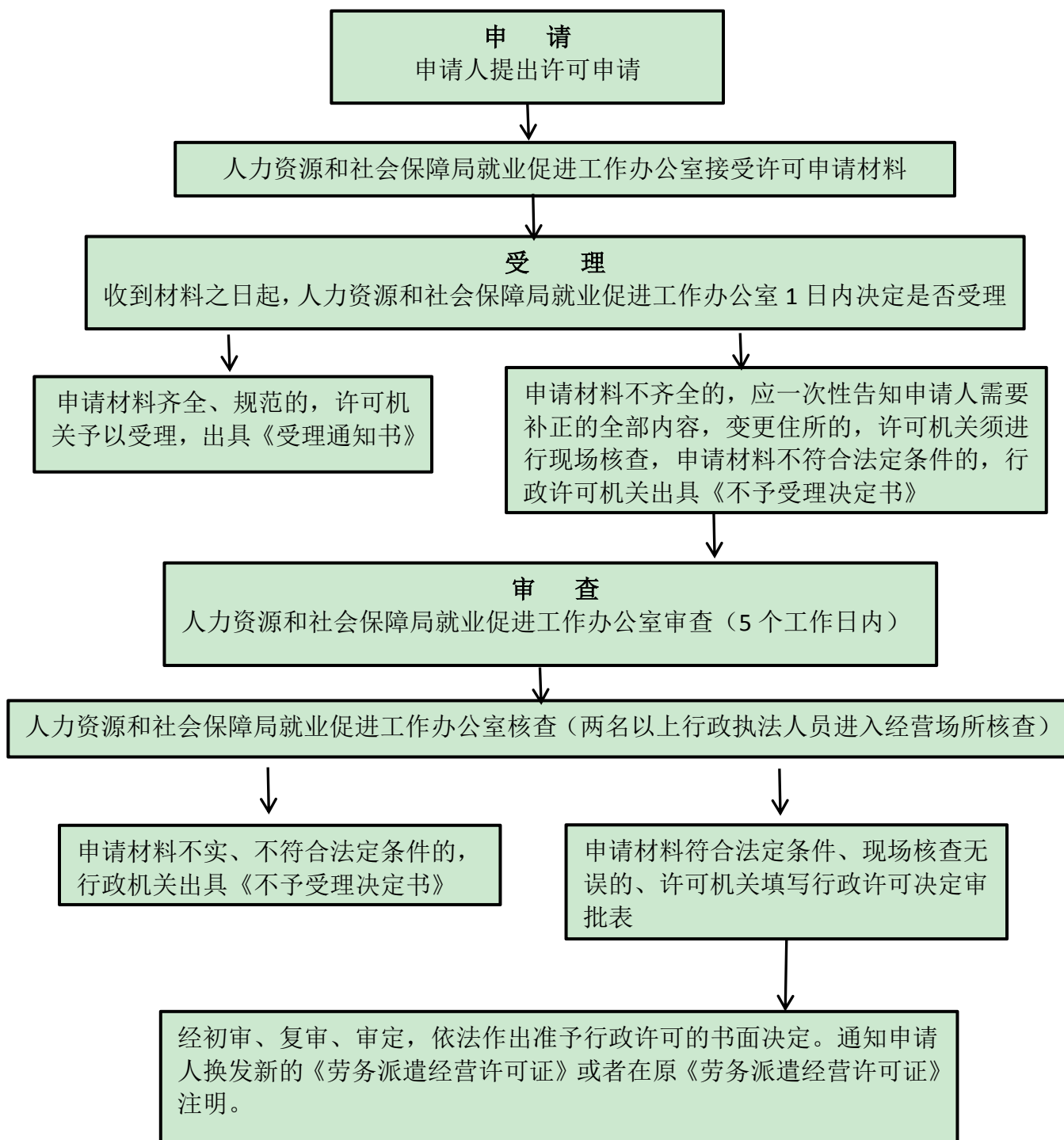
6.企业实行不定时工作制和综合计算工时工作制审批流程图



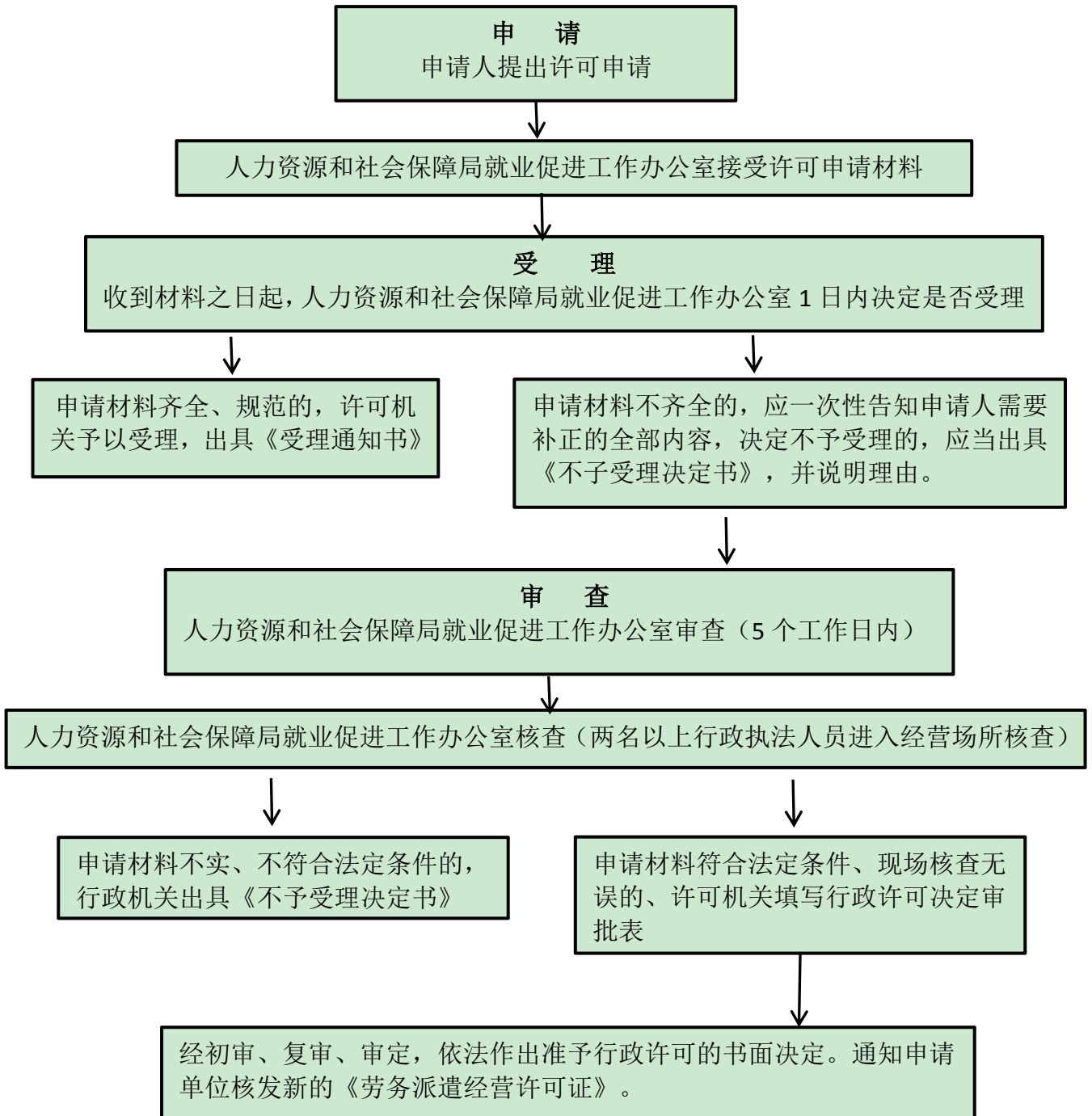
7. 劳务派遣经营许可审批流



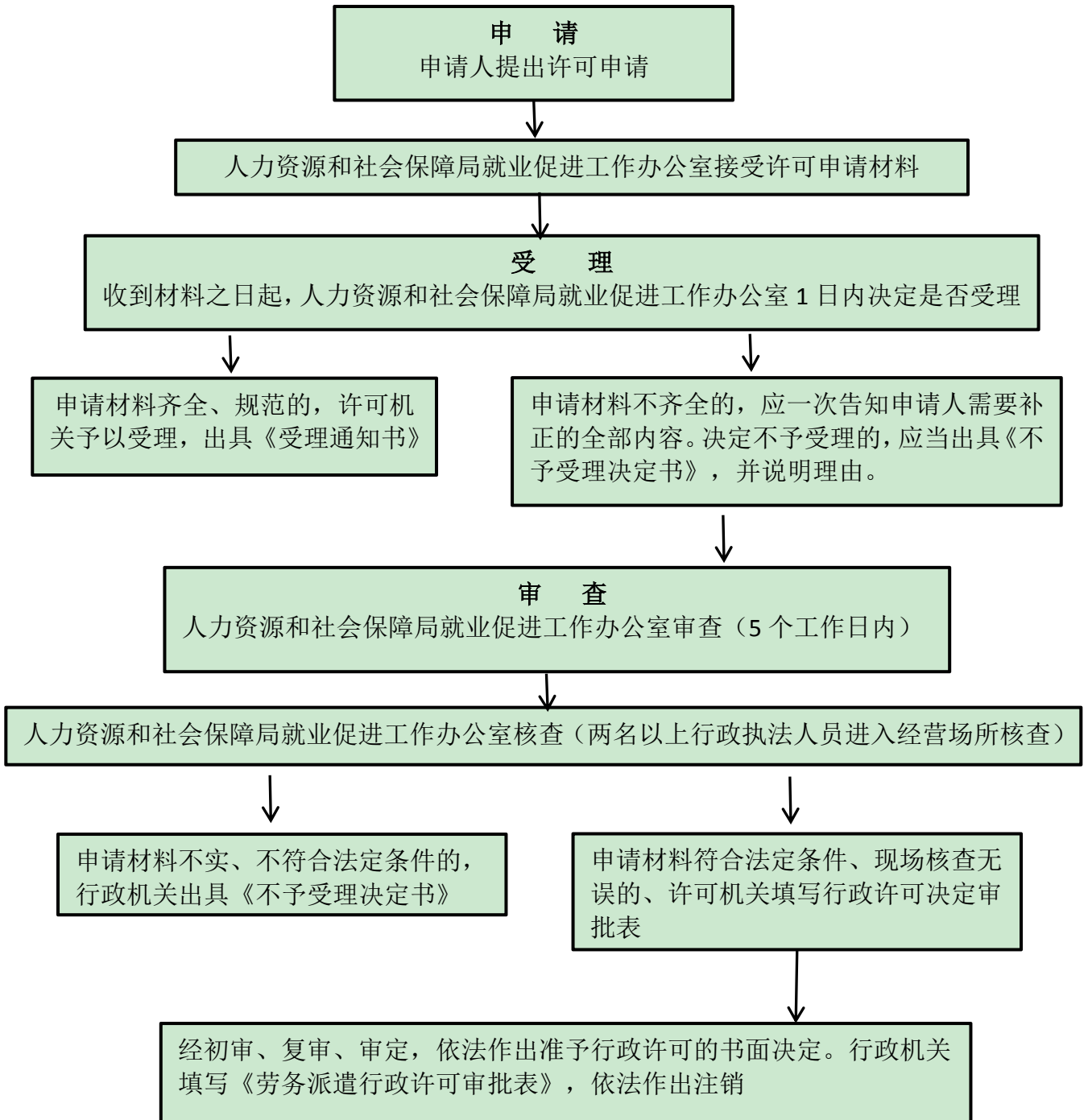
8. 劳务派遣变更许可审批流程图



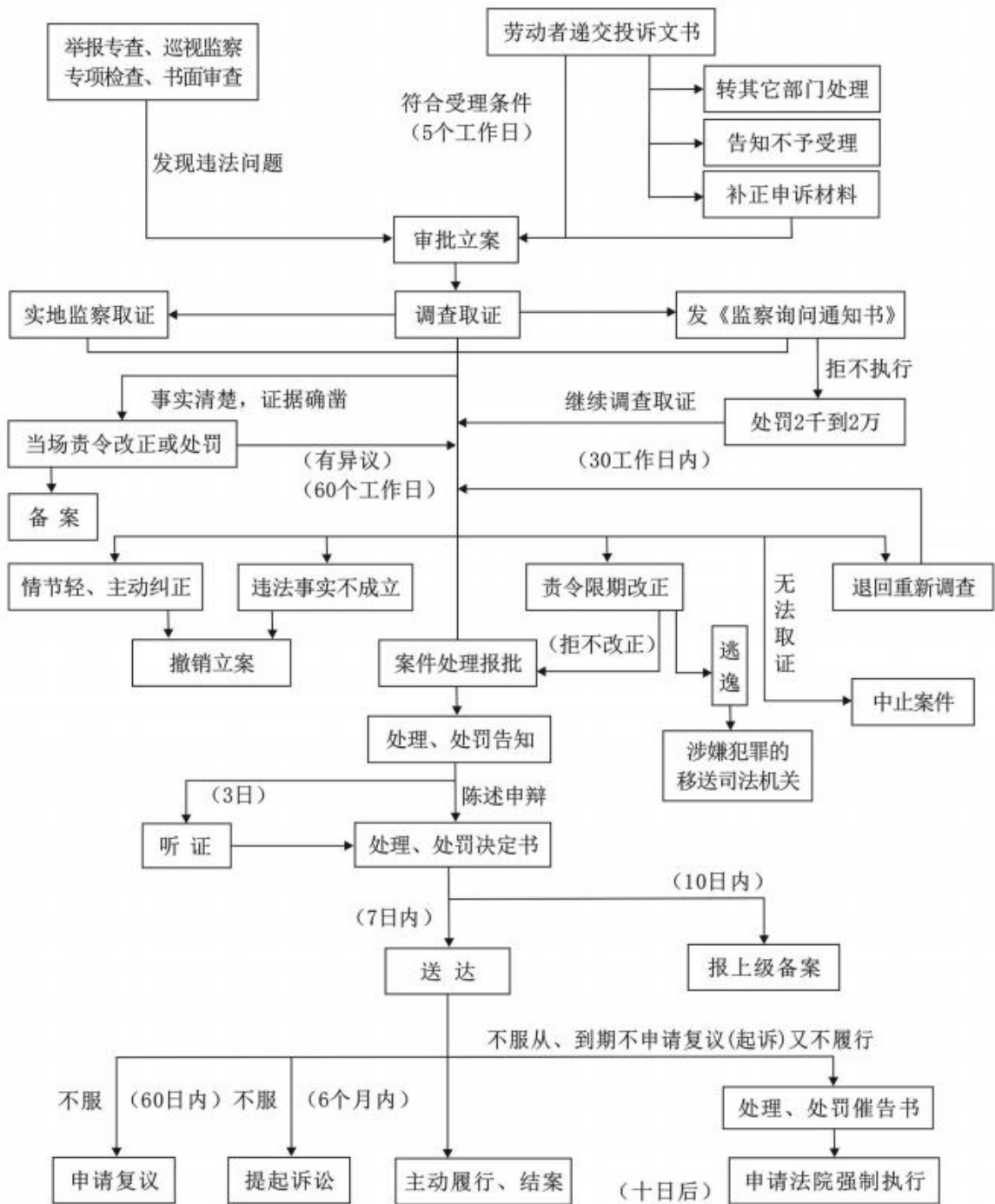
9. 劳务派遣延续许可审批流程图



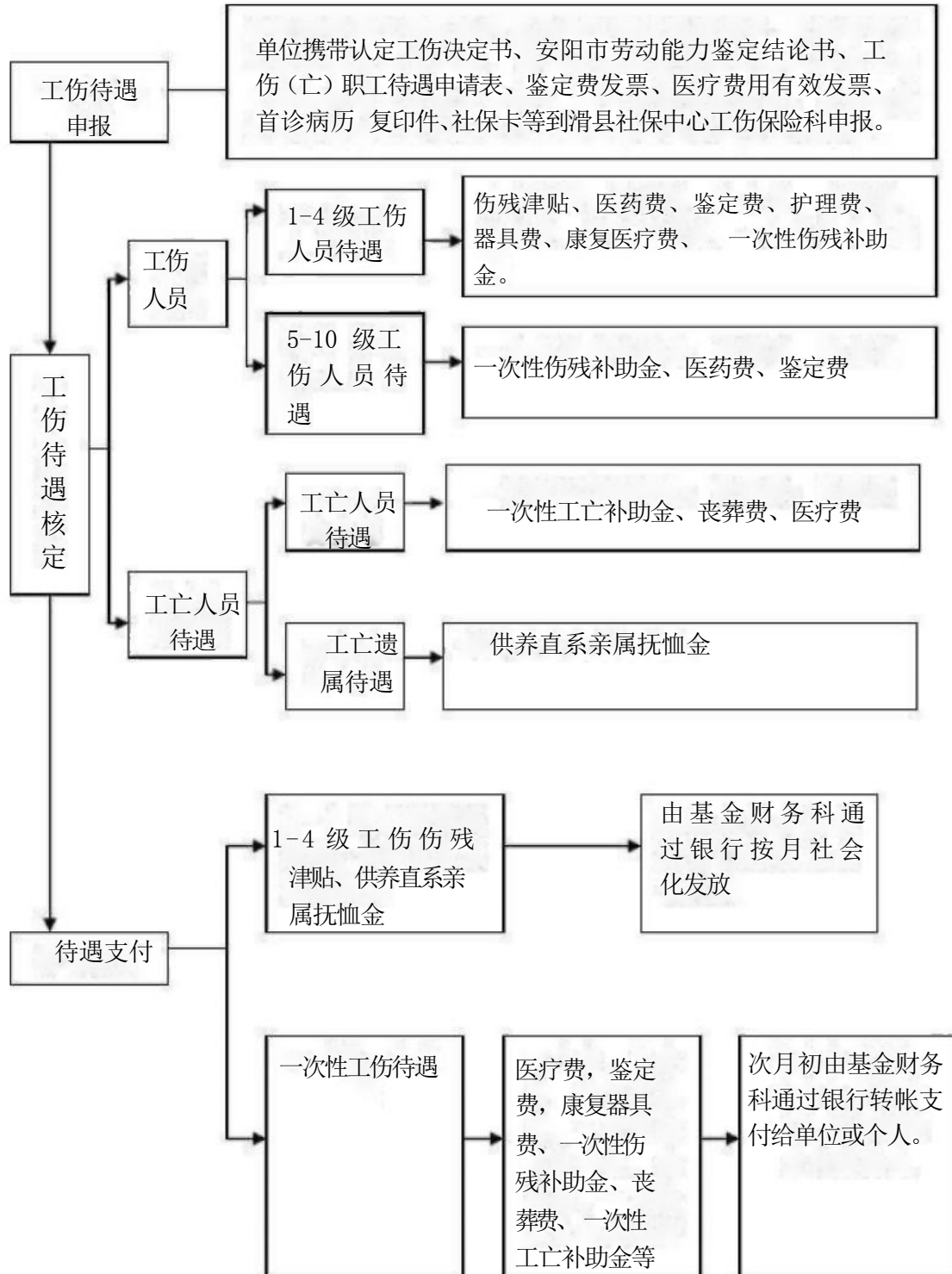
10. 劳务派遣注销许可审批流程图



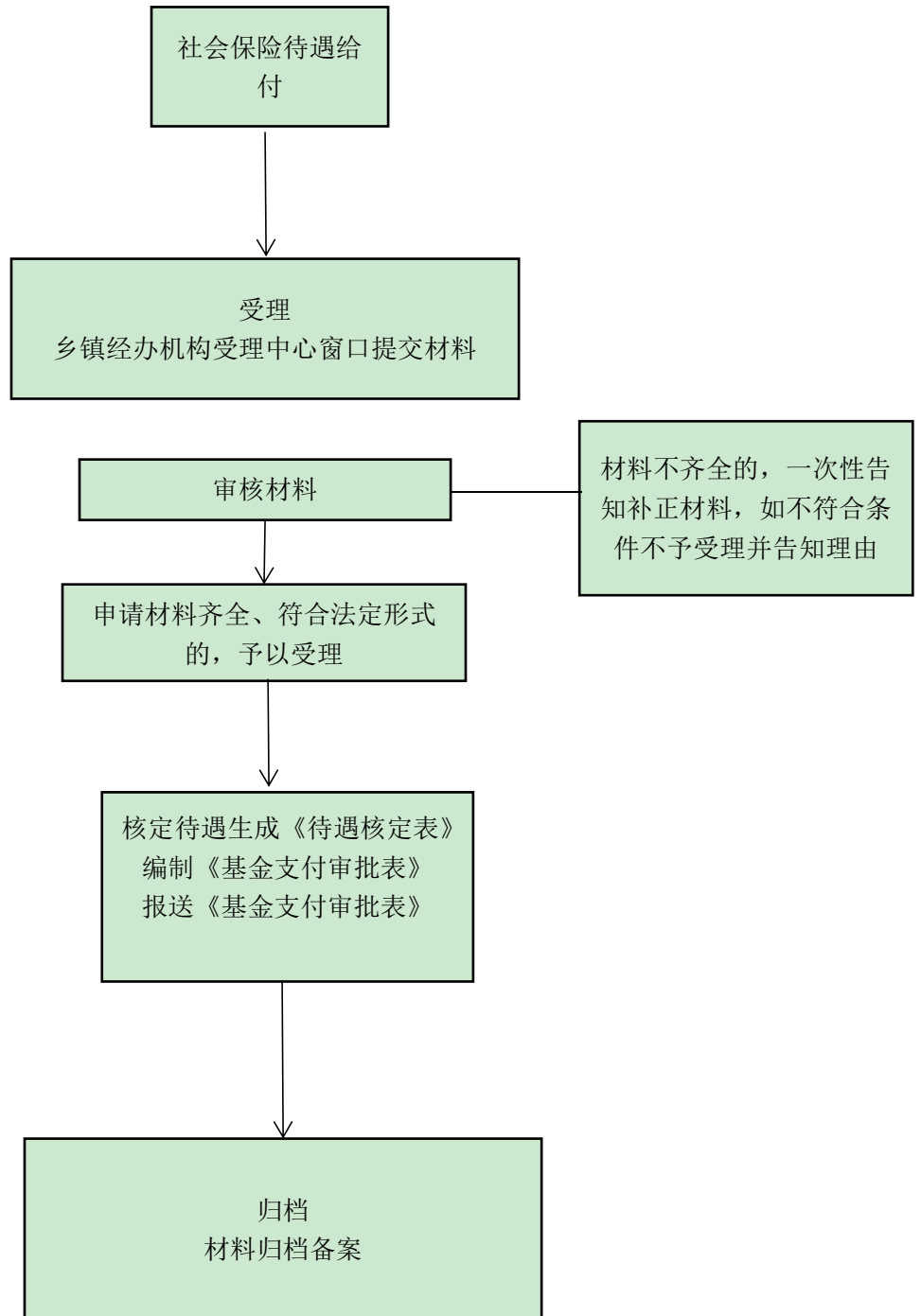
11-41.劳动保障监察执法流程图



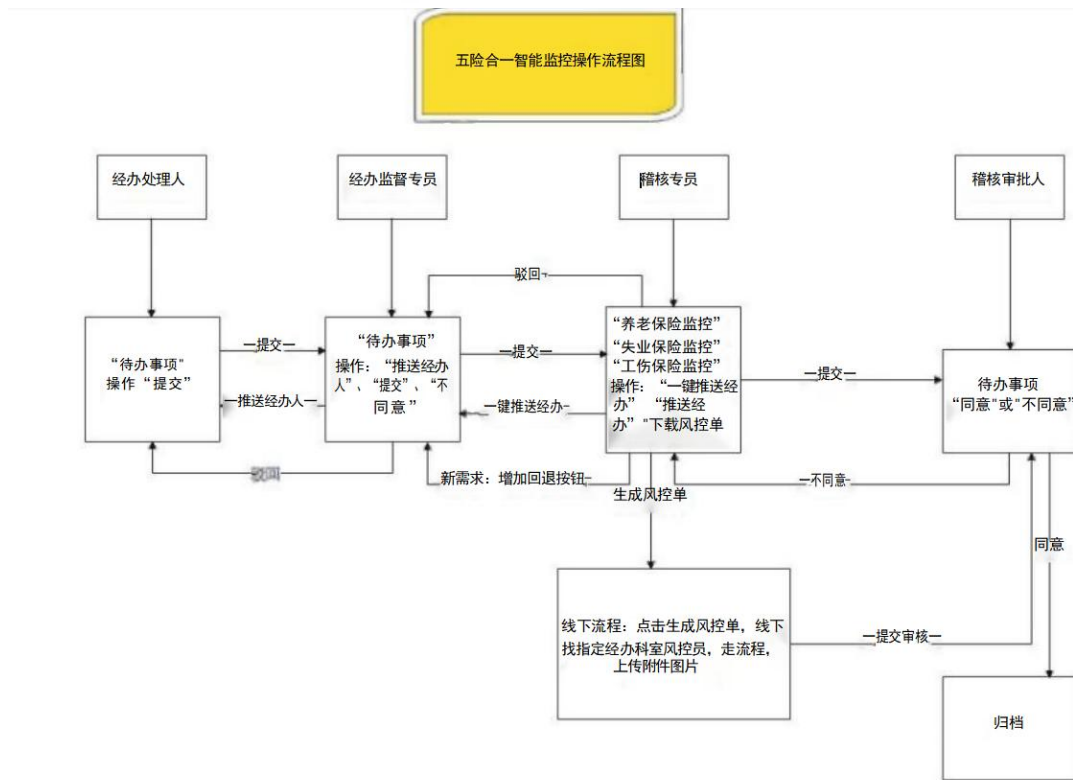
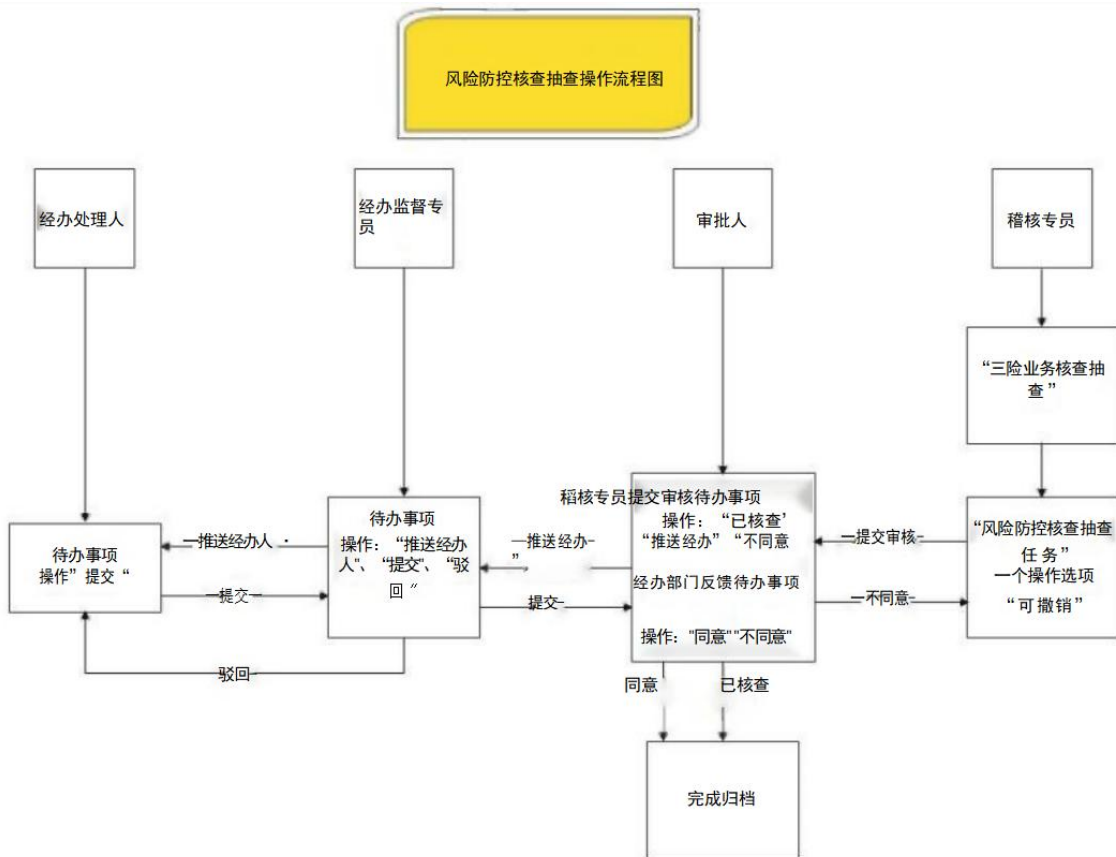
42-43. 工伤待遇核定流程图



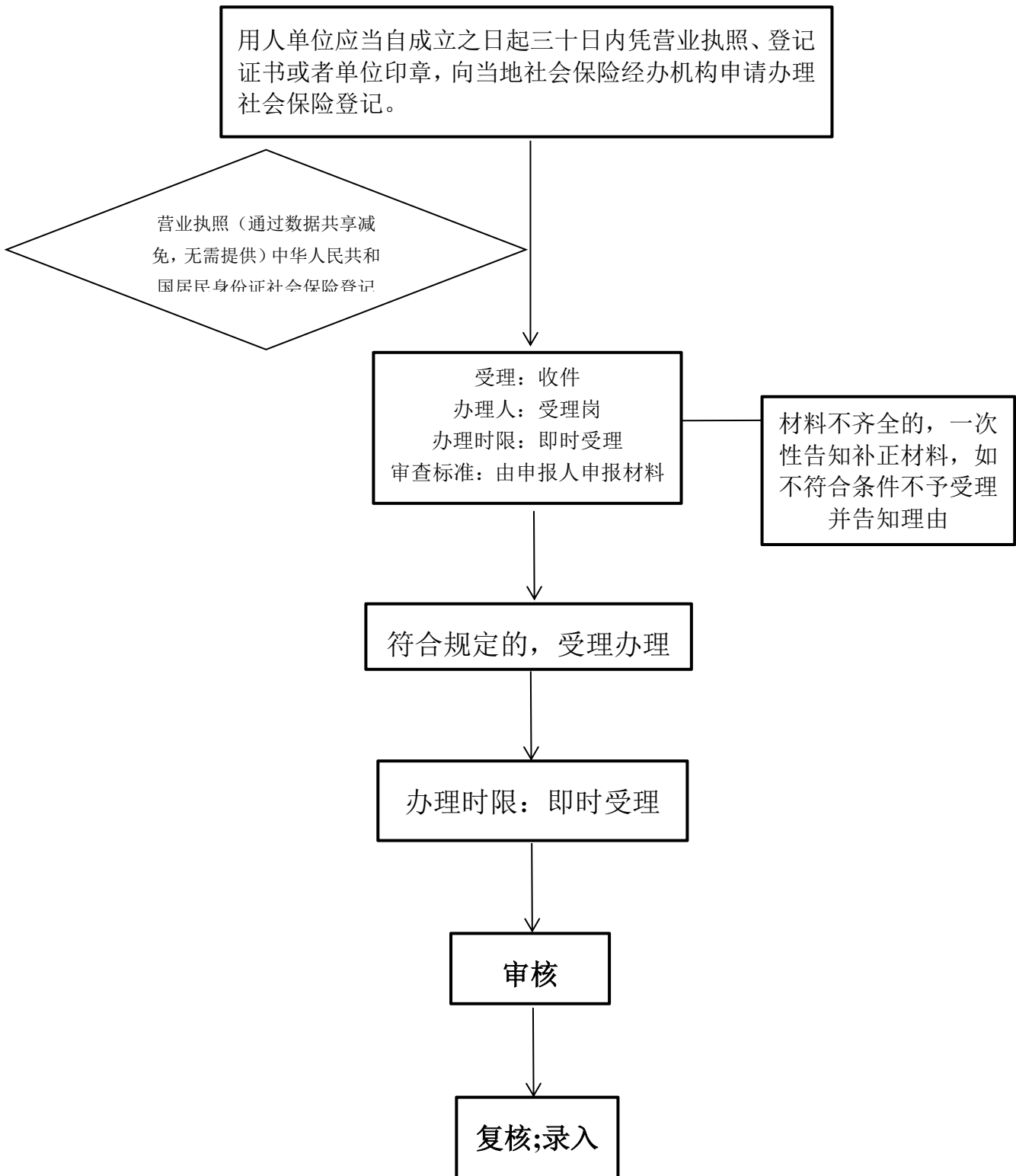
44. 社会保险待遇给付流程图



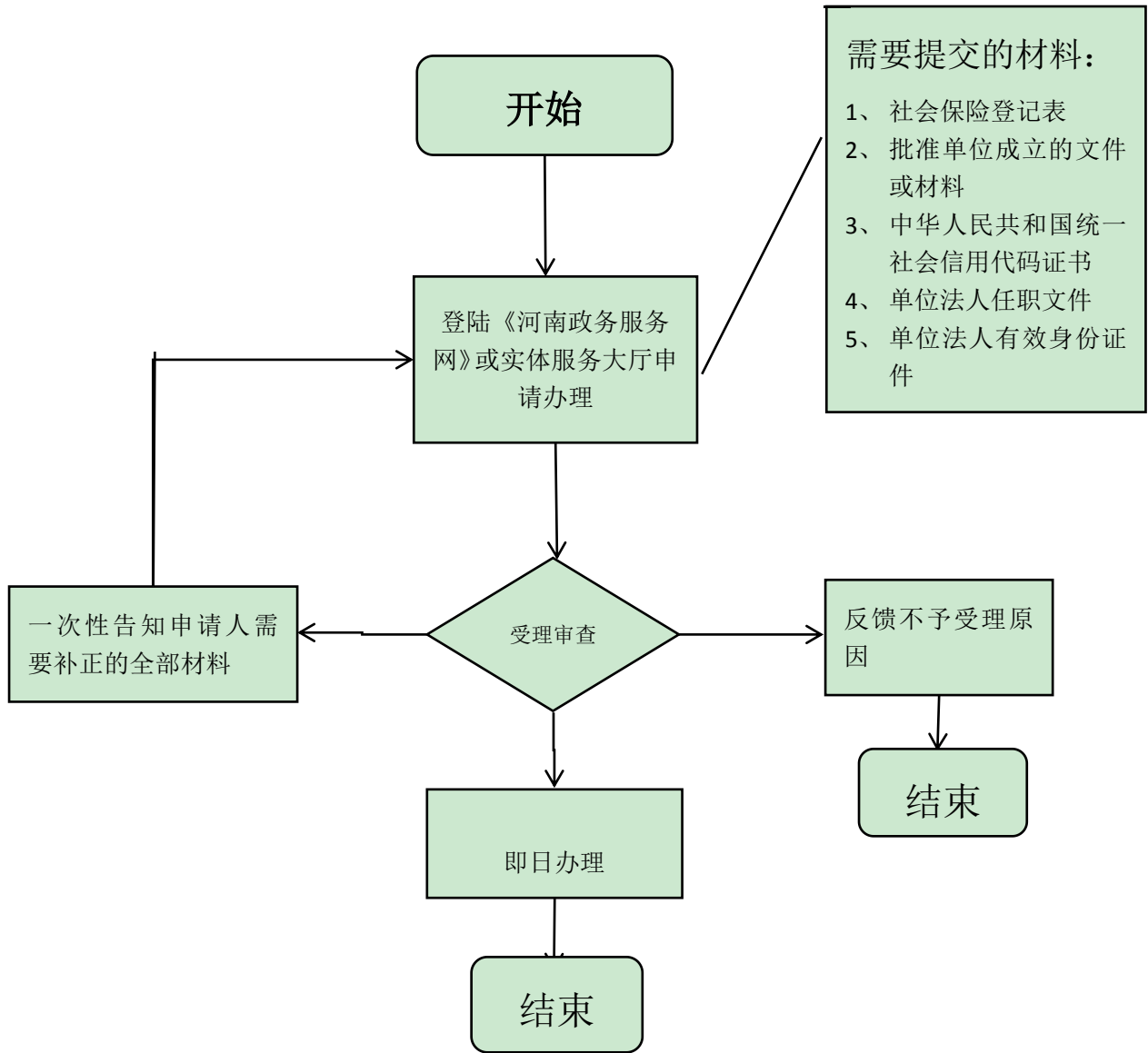
45. 社会保险稽核流程图



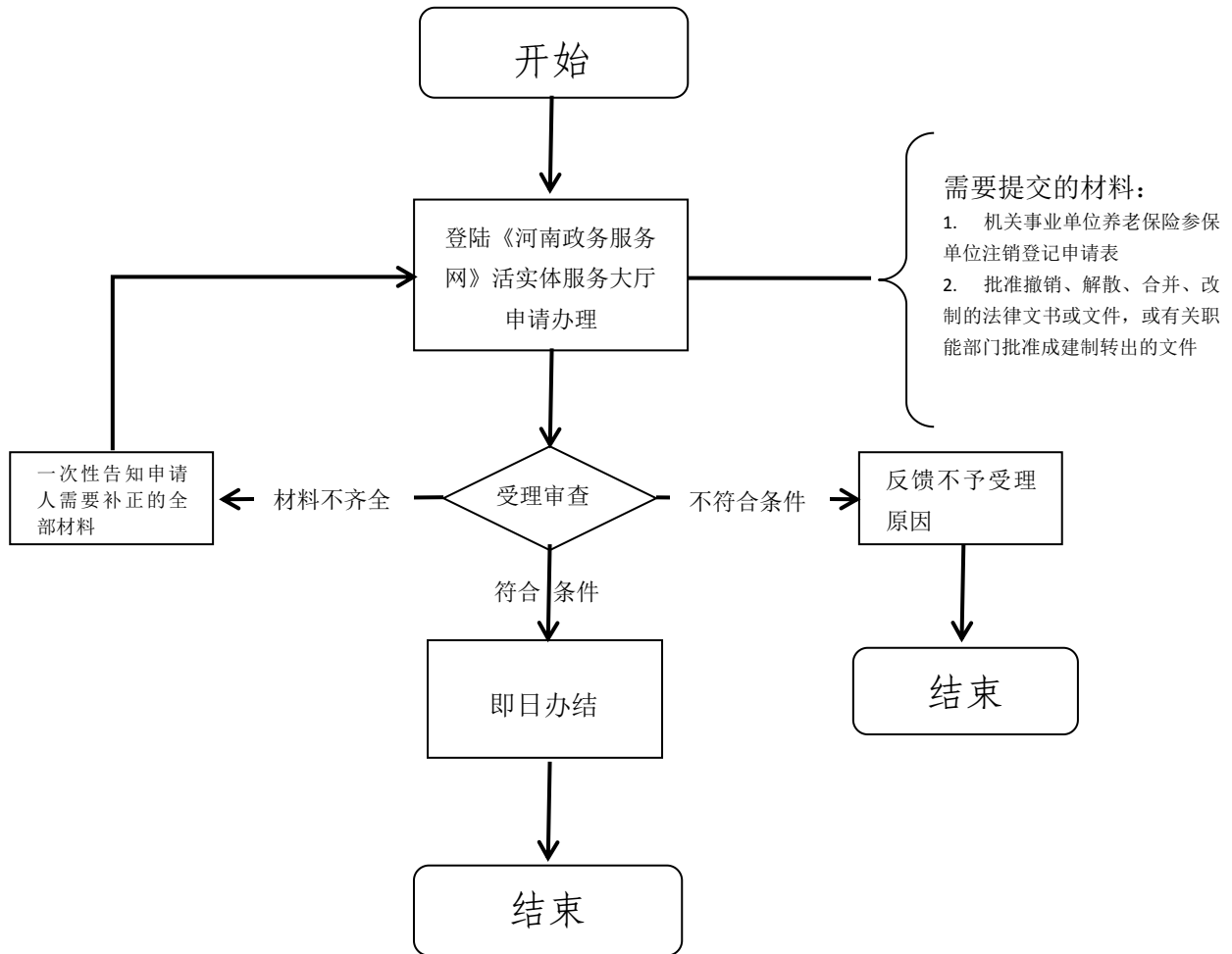
46.企业社会保险登记流程图



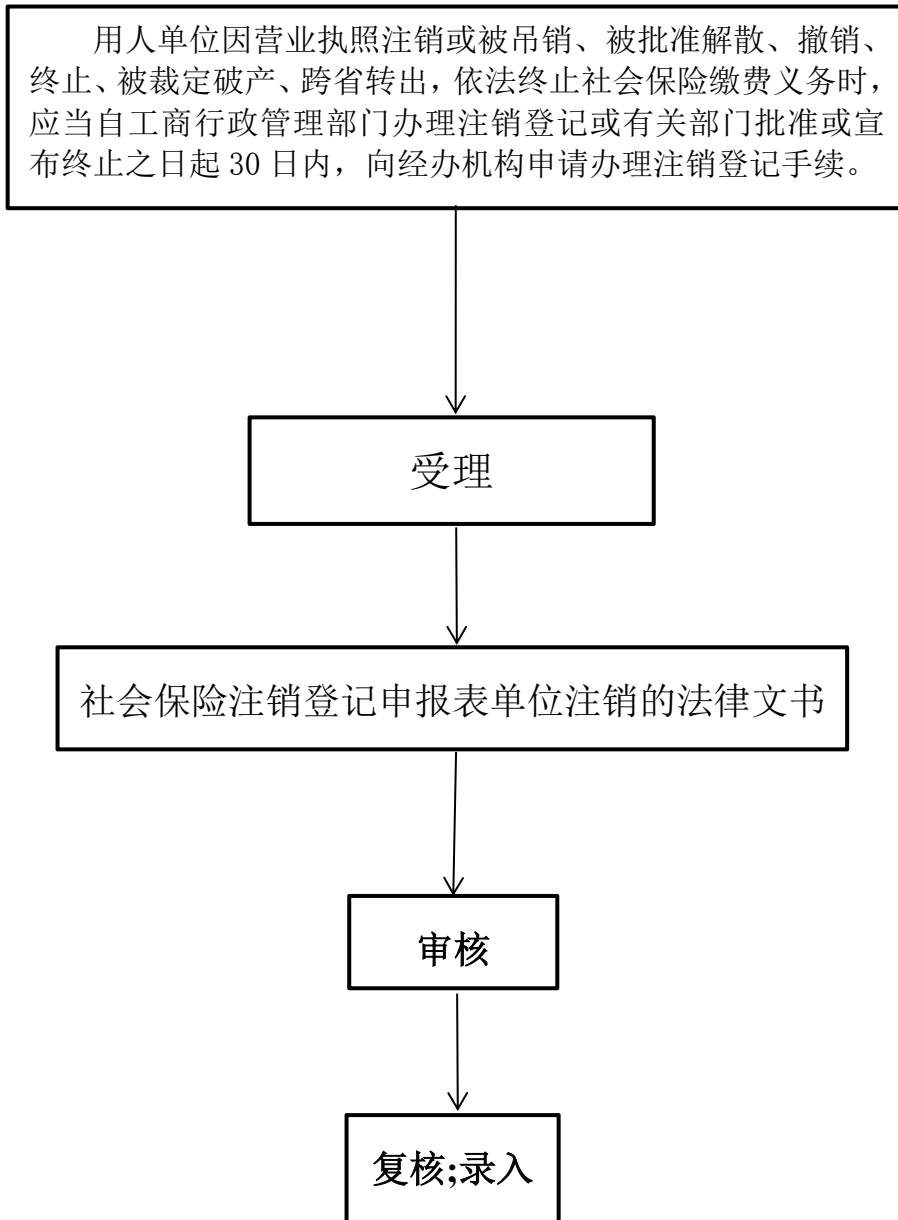
47. 机关事业单位社会保险登记流程图



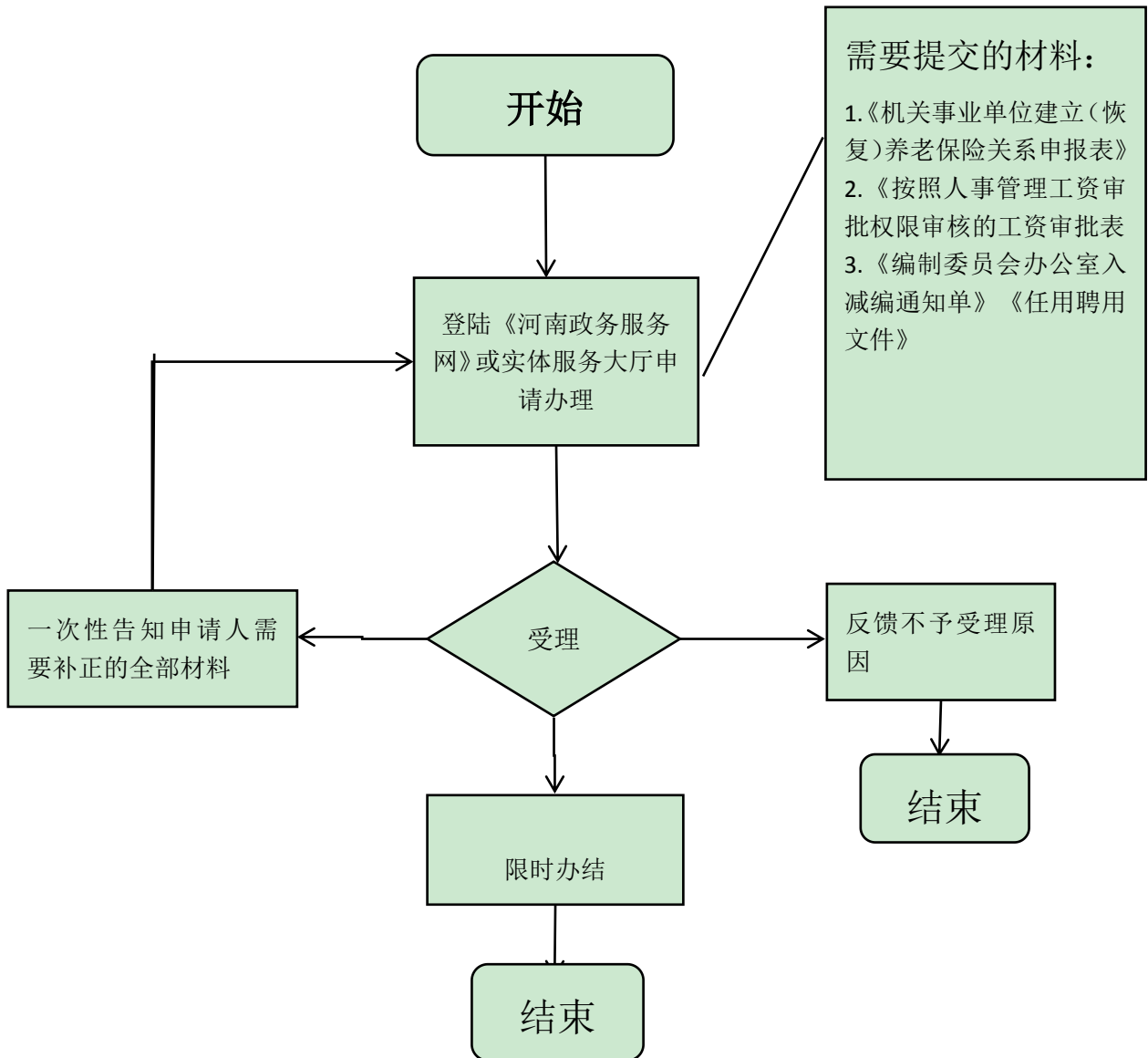
48. 参保单位注销流程图（机关事业单位养老保险）



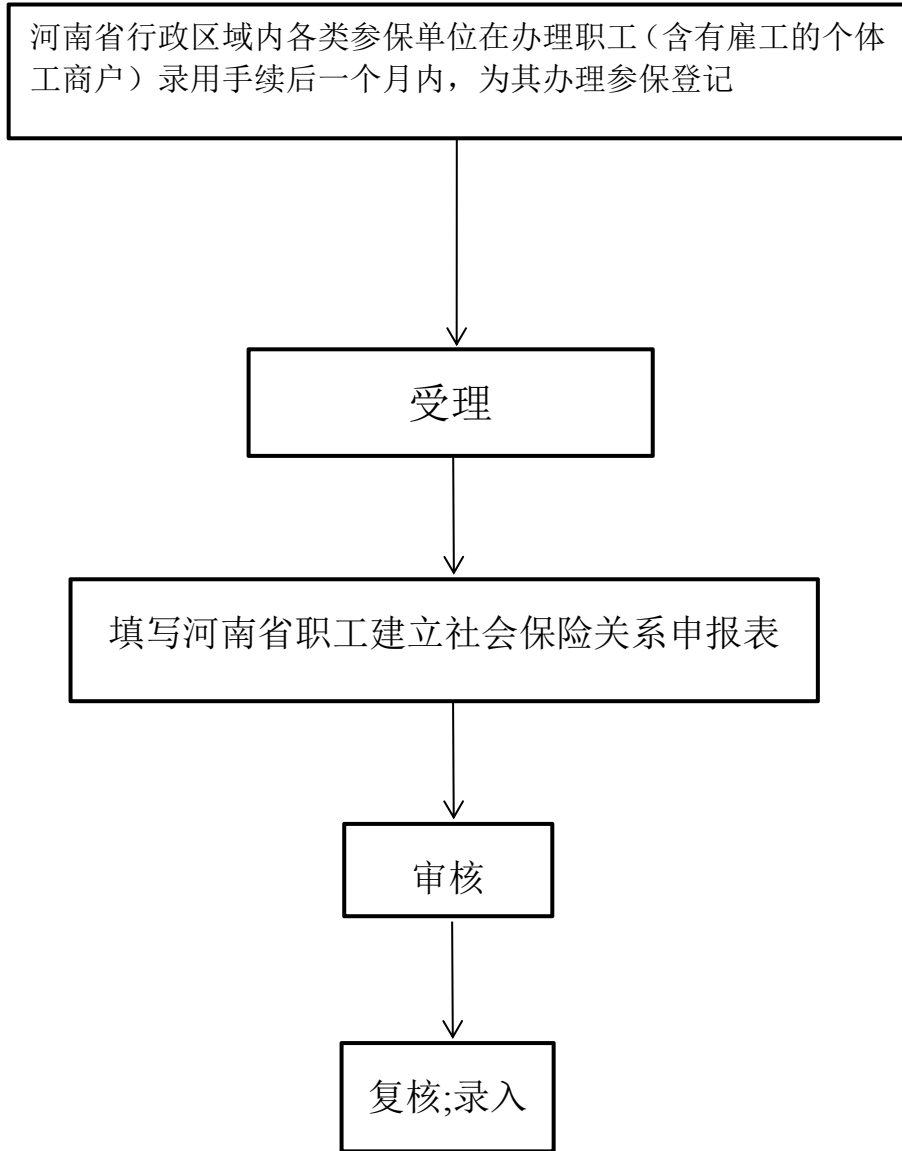
49.参保单位注销流程图（企业养老保险）



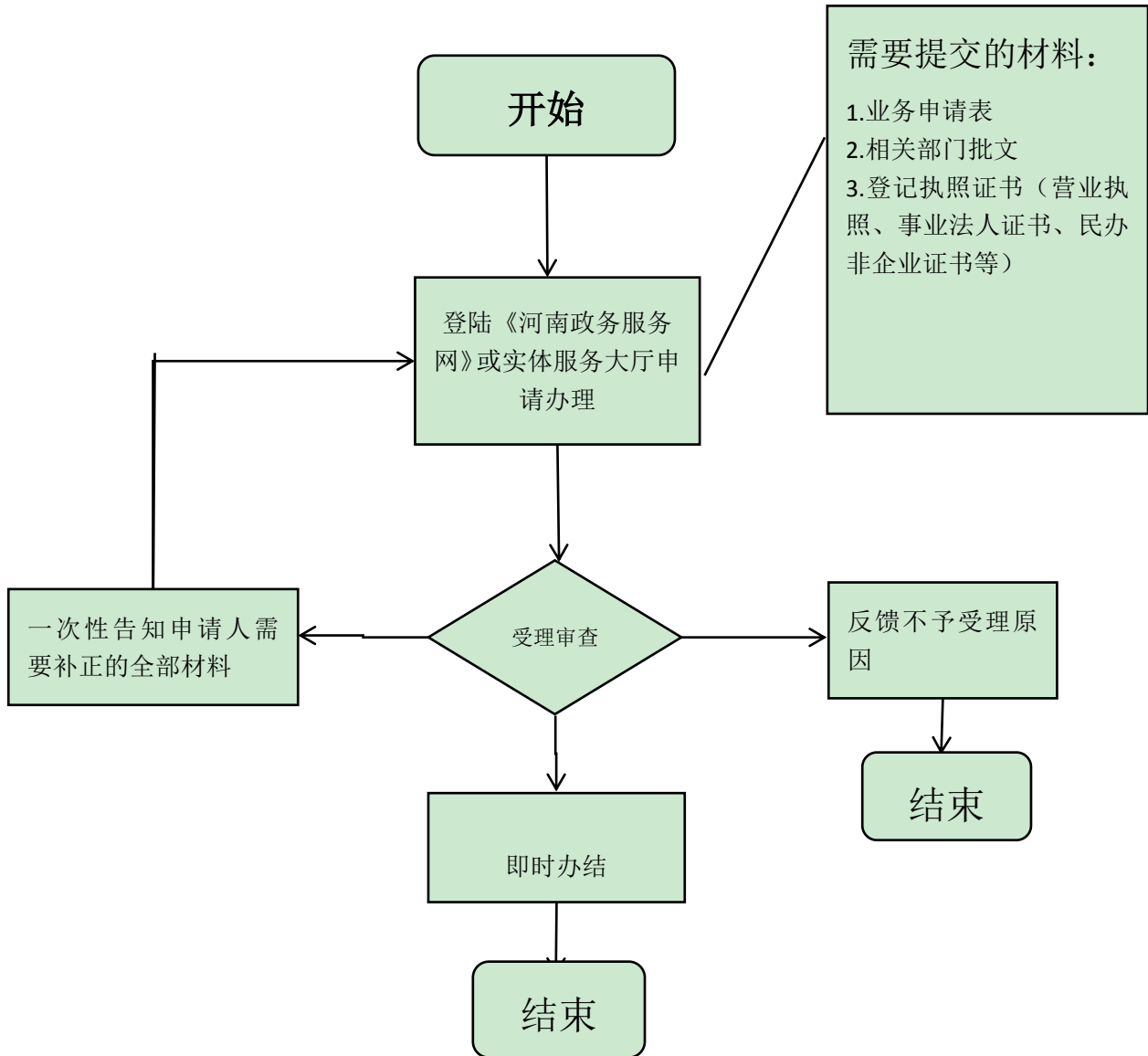
50.职工参保登记流程图（机关事业单位养老保险）



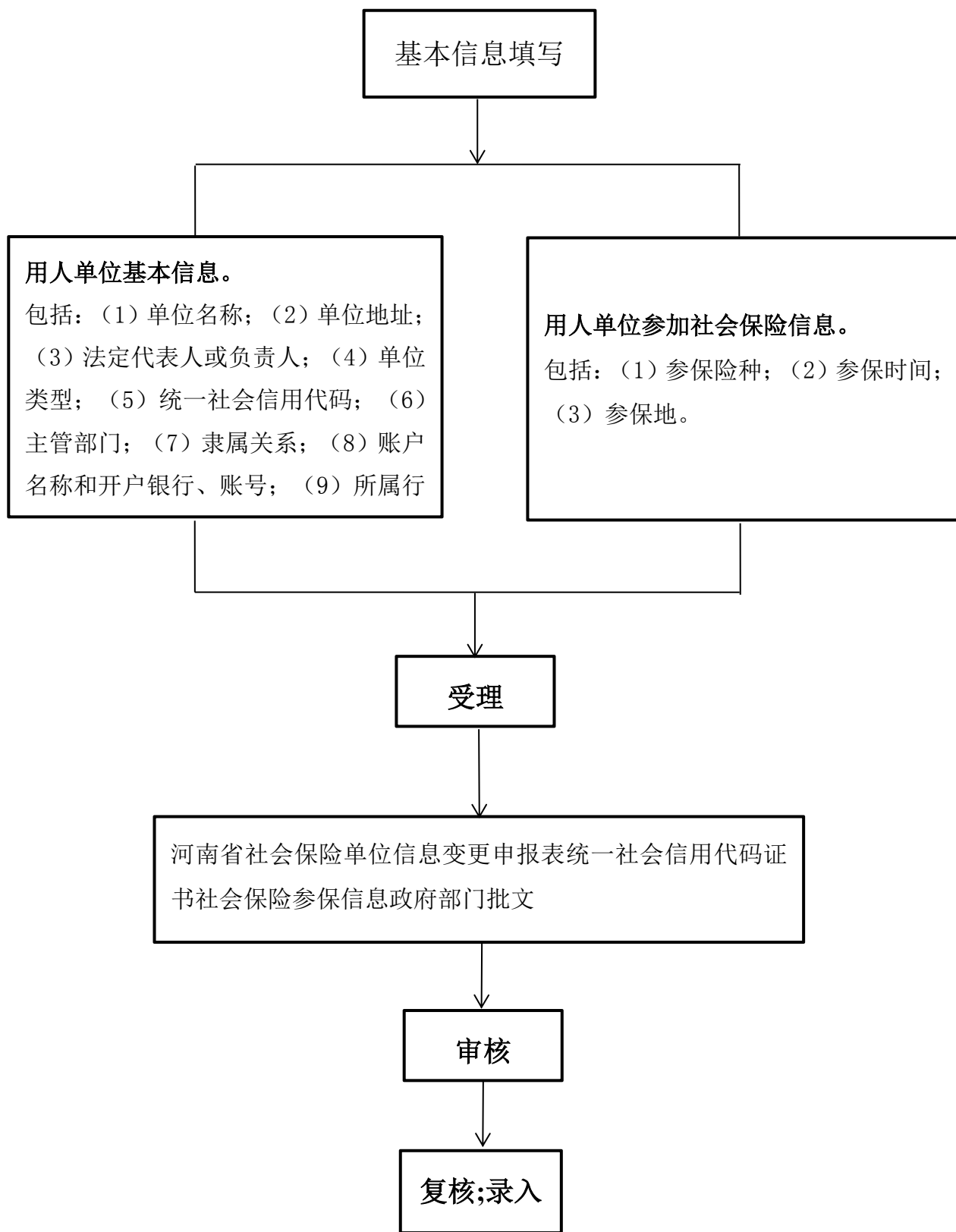
职工参保登记流程图（企业养老保险）



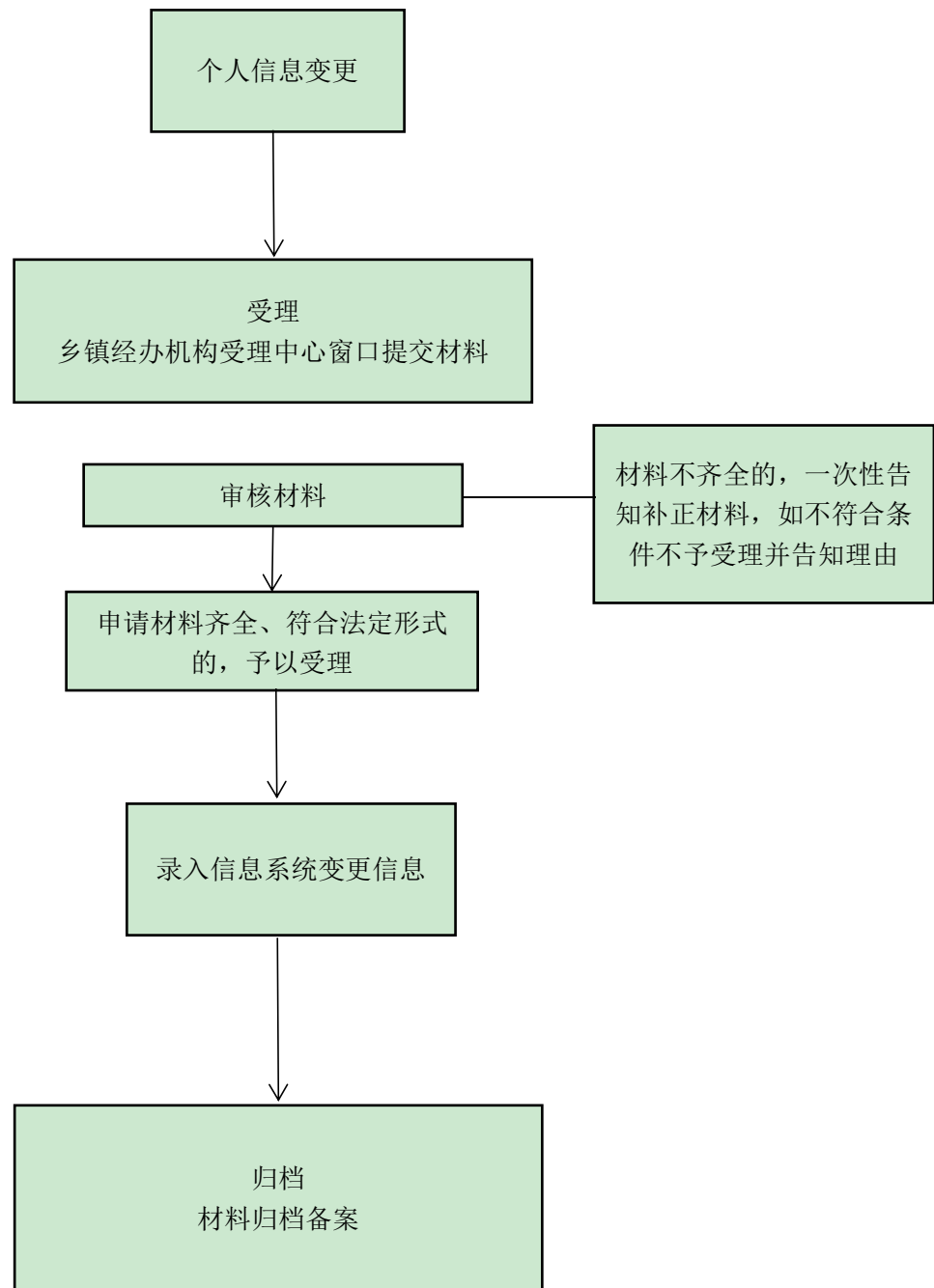
51.单位（项目）基本信息变更（机关事业单位养老保险）



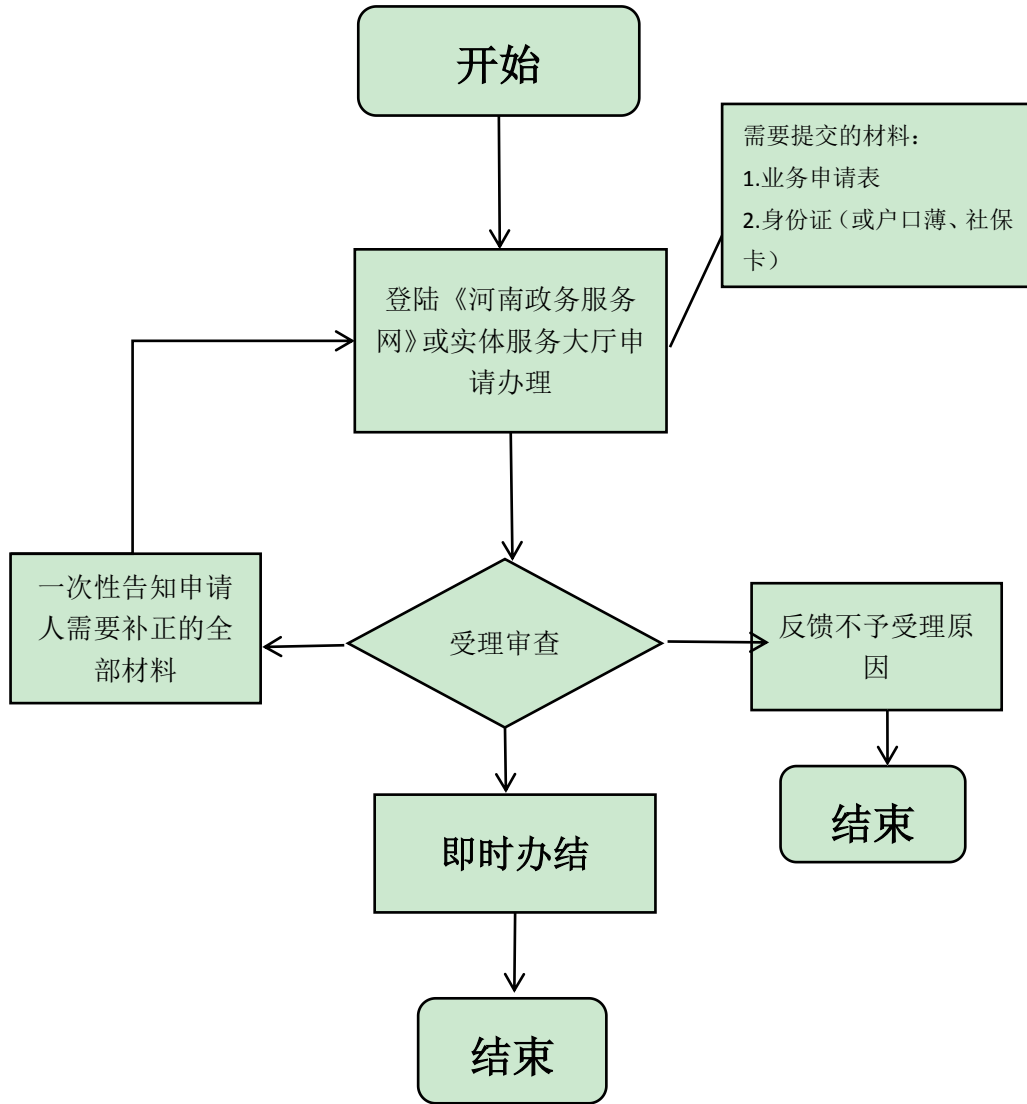
单位（项目）基本信息变更（企业养老保险）



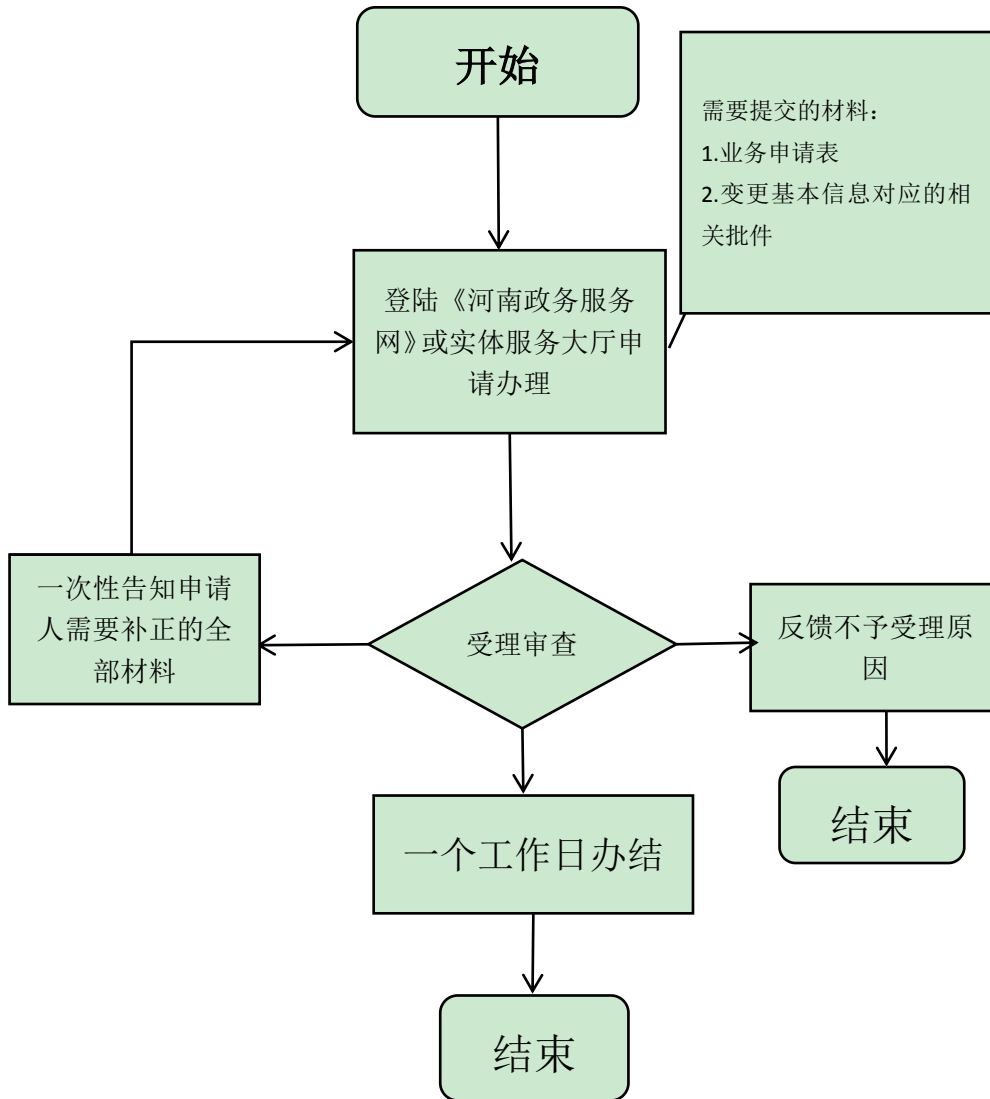
52.个人基本信息变更流程图（城乡居民）



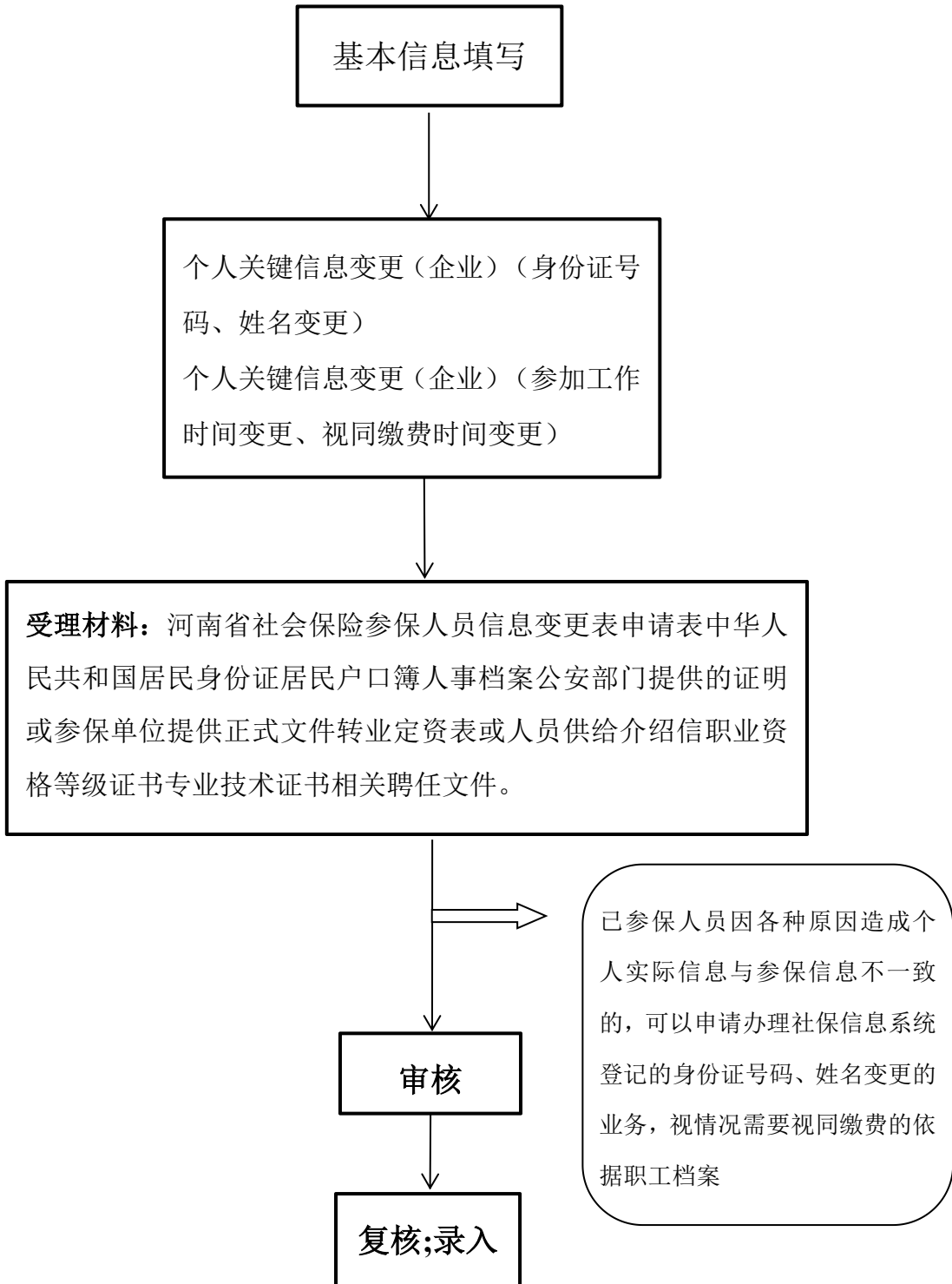
个人基本信息变更流程图（机关事业在职人员）



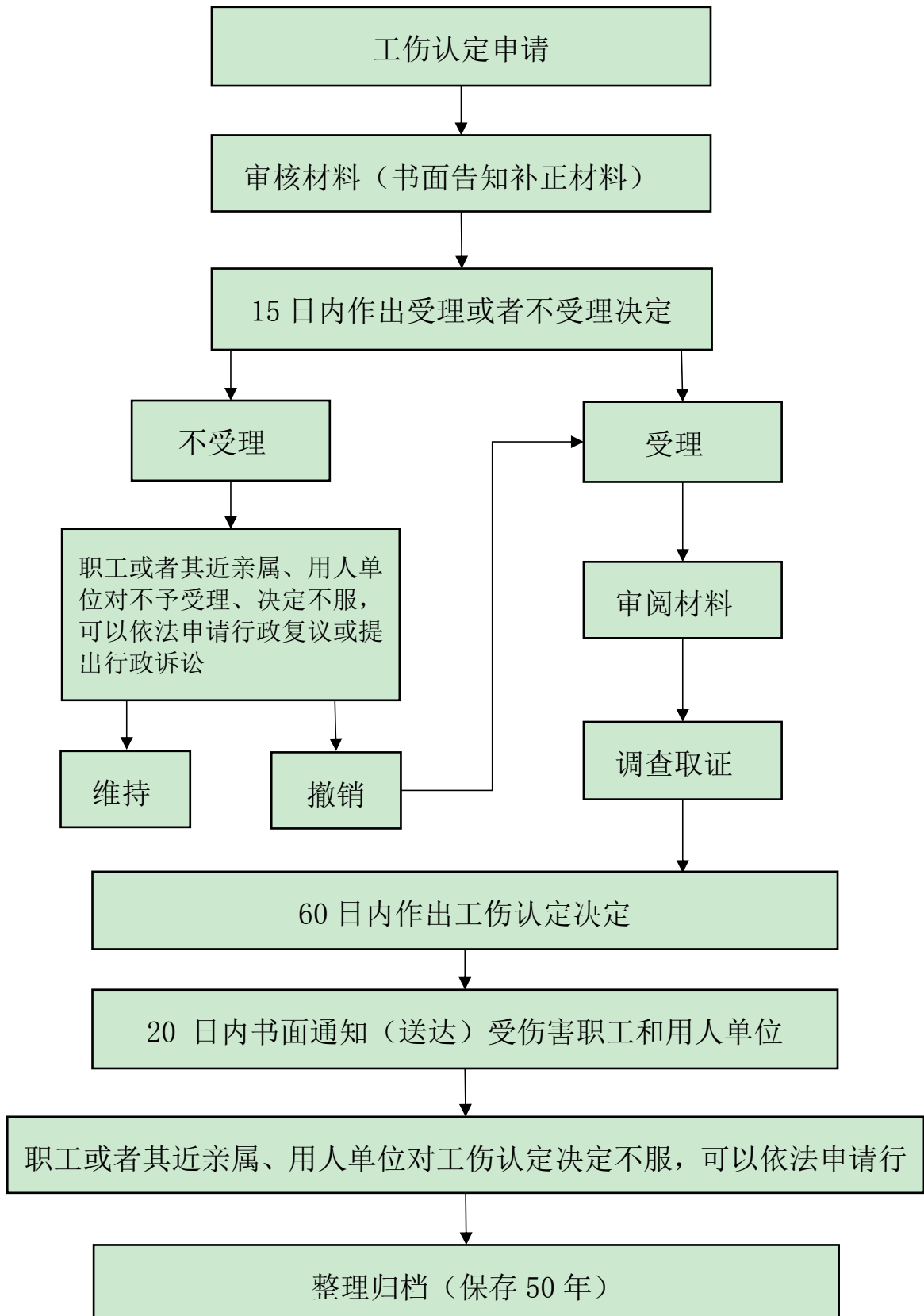
个人基本信息变更流程图（机关事业单位退休人员）



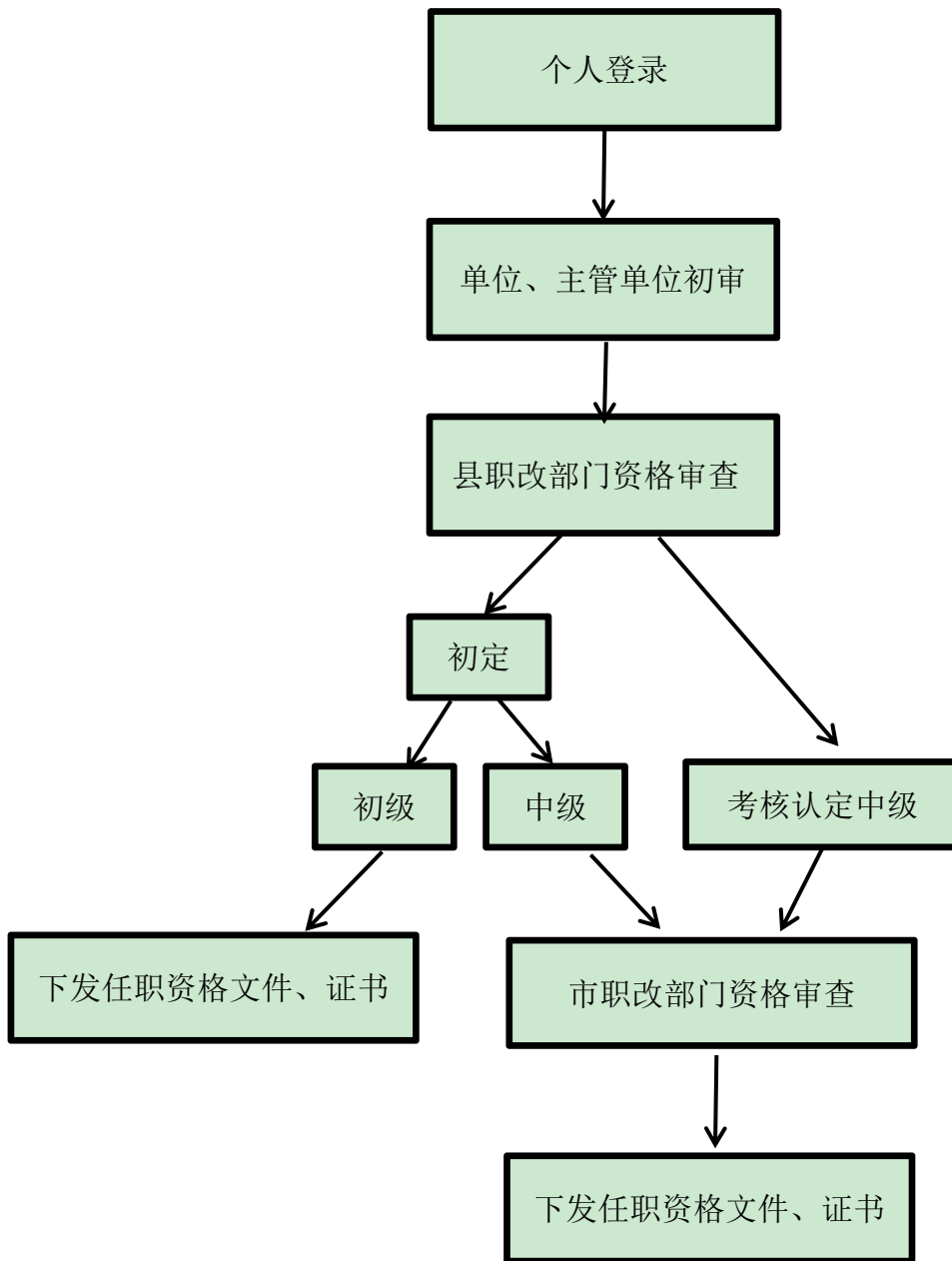
个人基本信息变更流程图（企业）



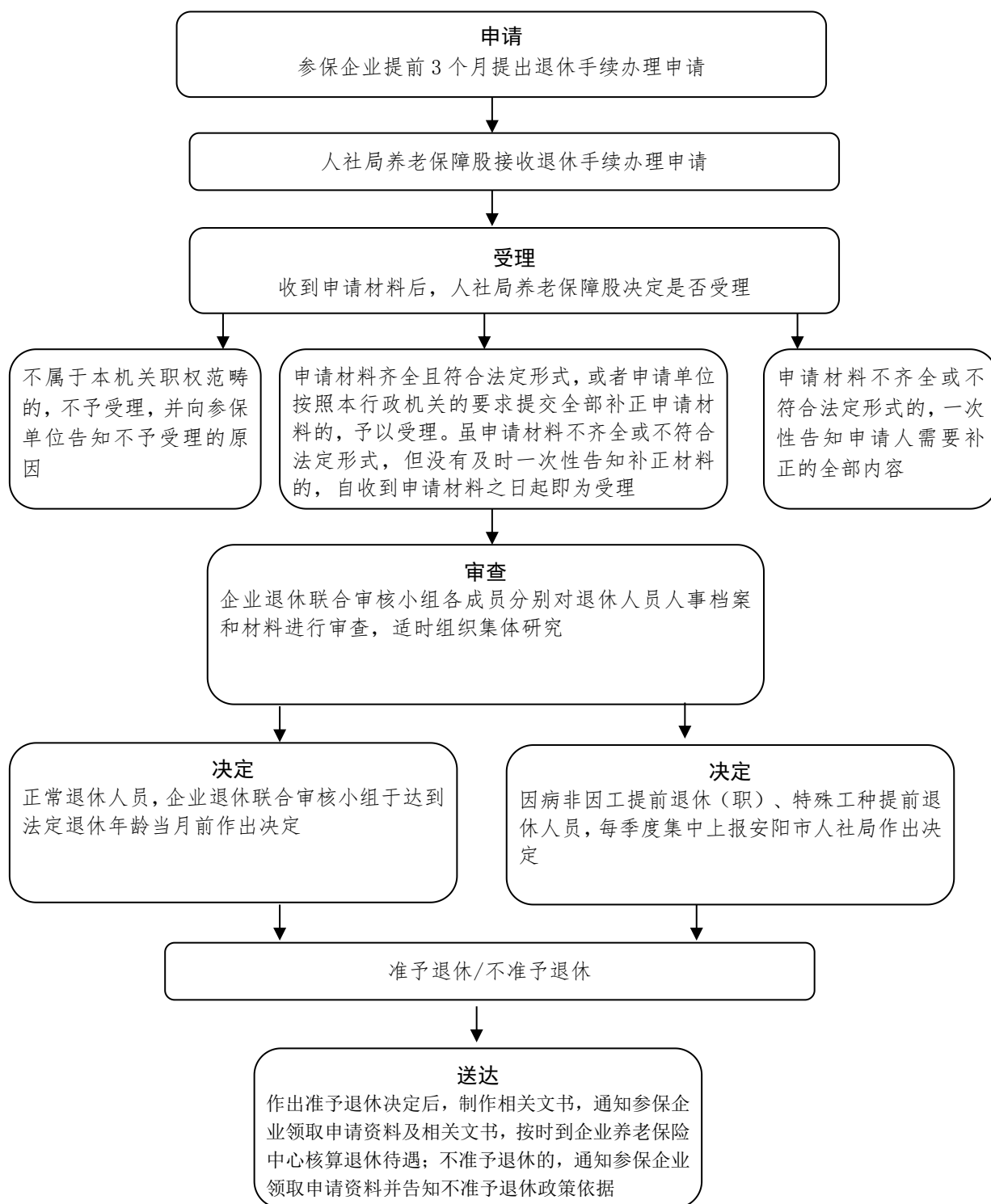
53. 工伤认定审批流程图



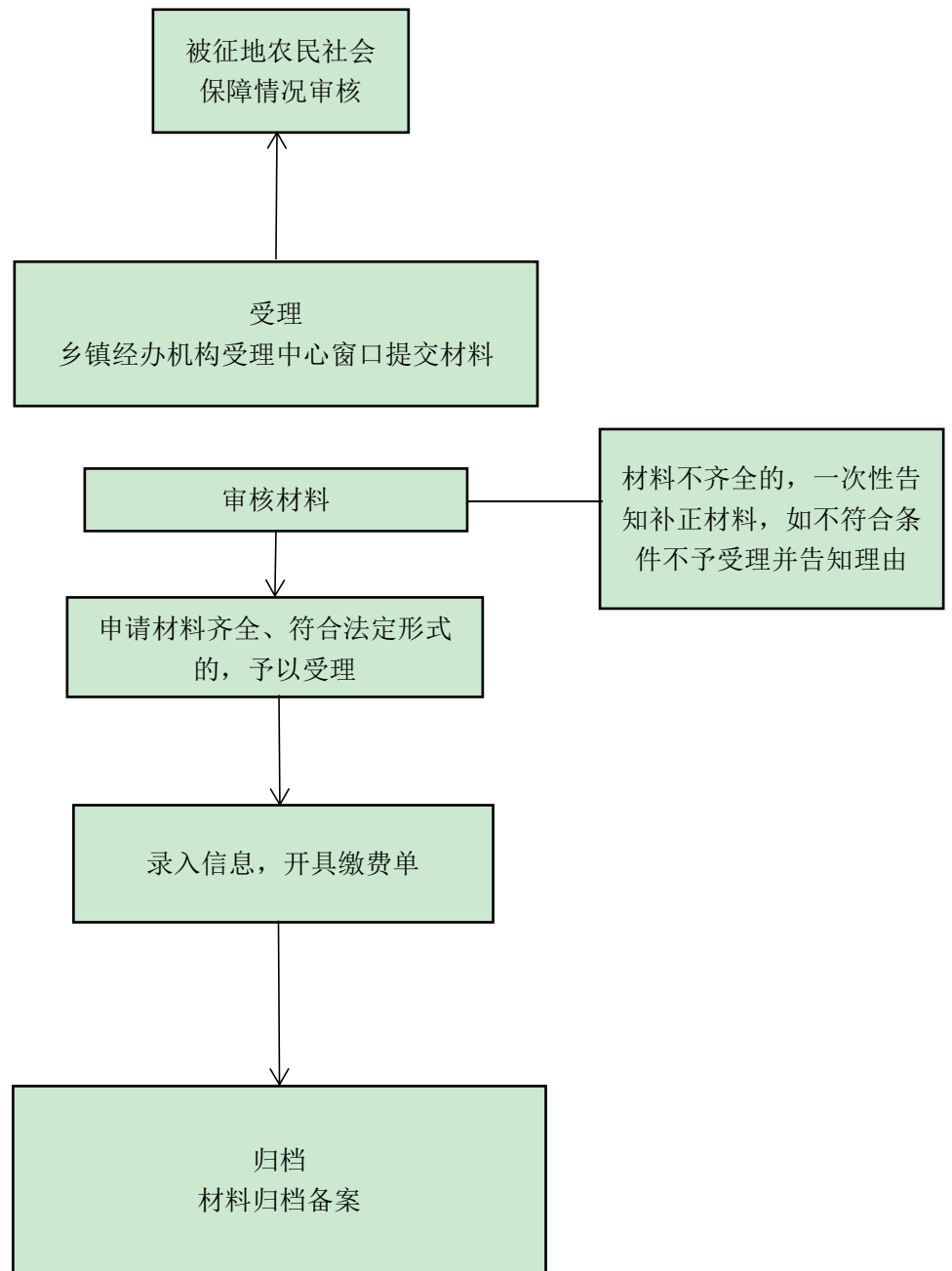
54.专业技术职务任职资格审定审批流程图



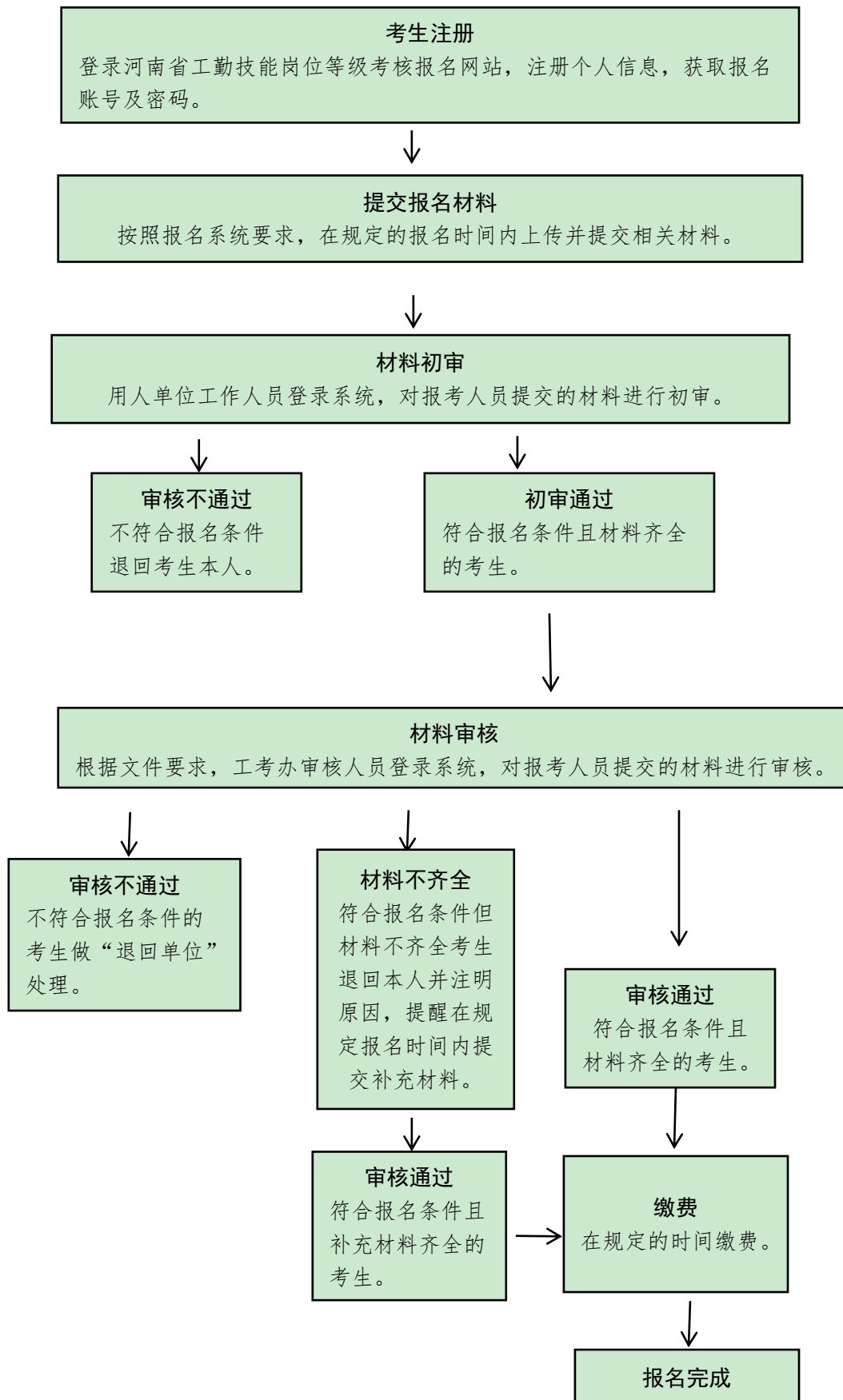
55.滑县企业参保人员退休手续办理流程图



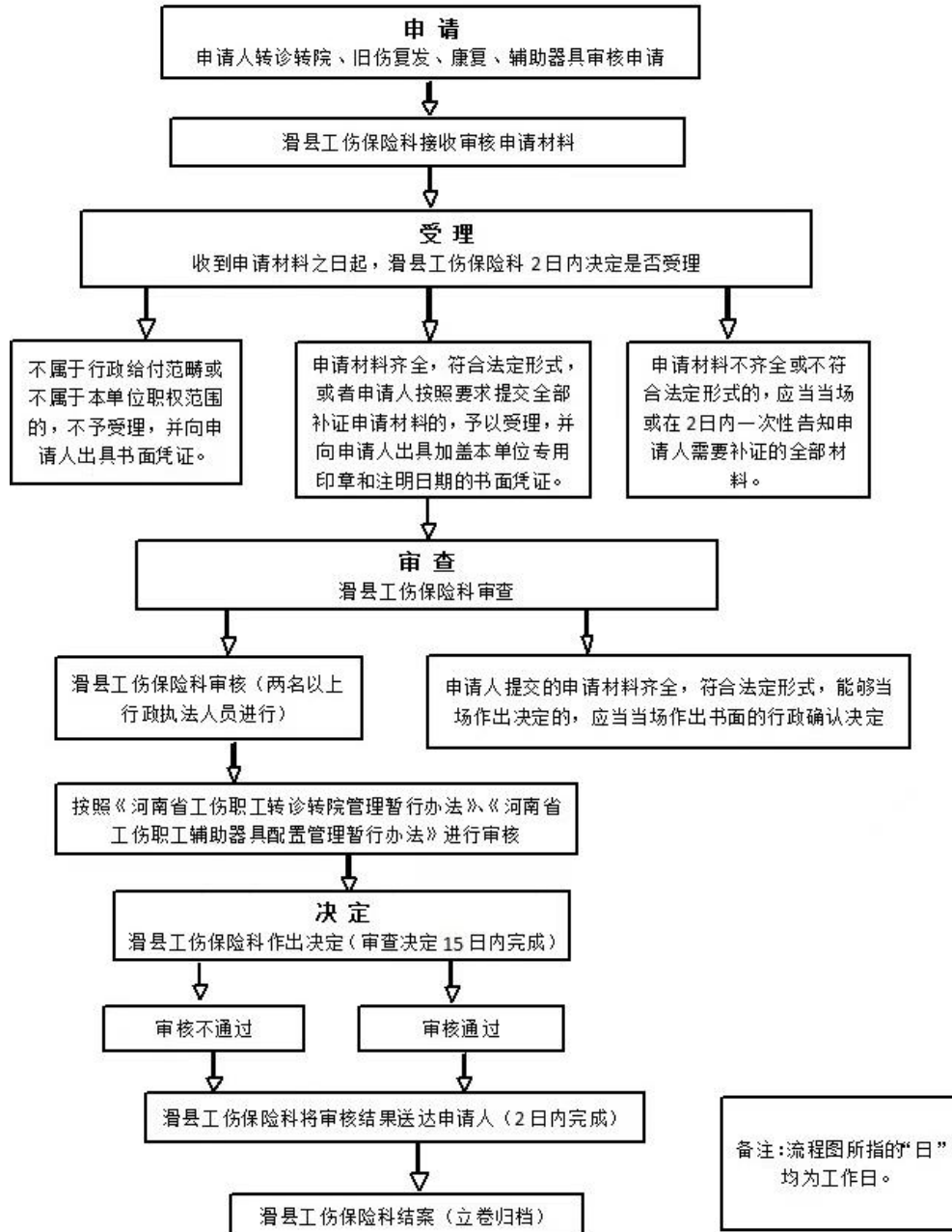
56.被征地农民社会保障情况审核流程图



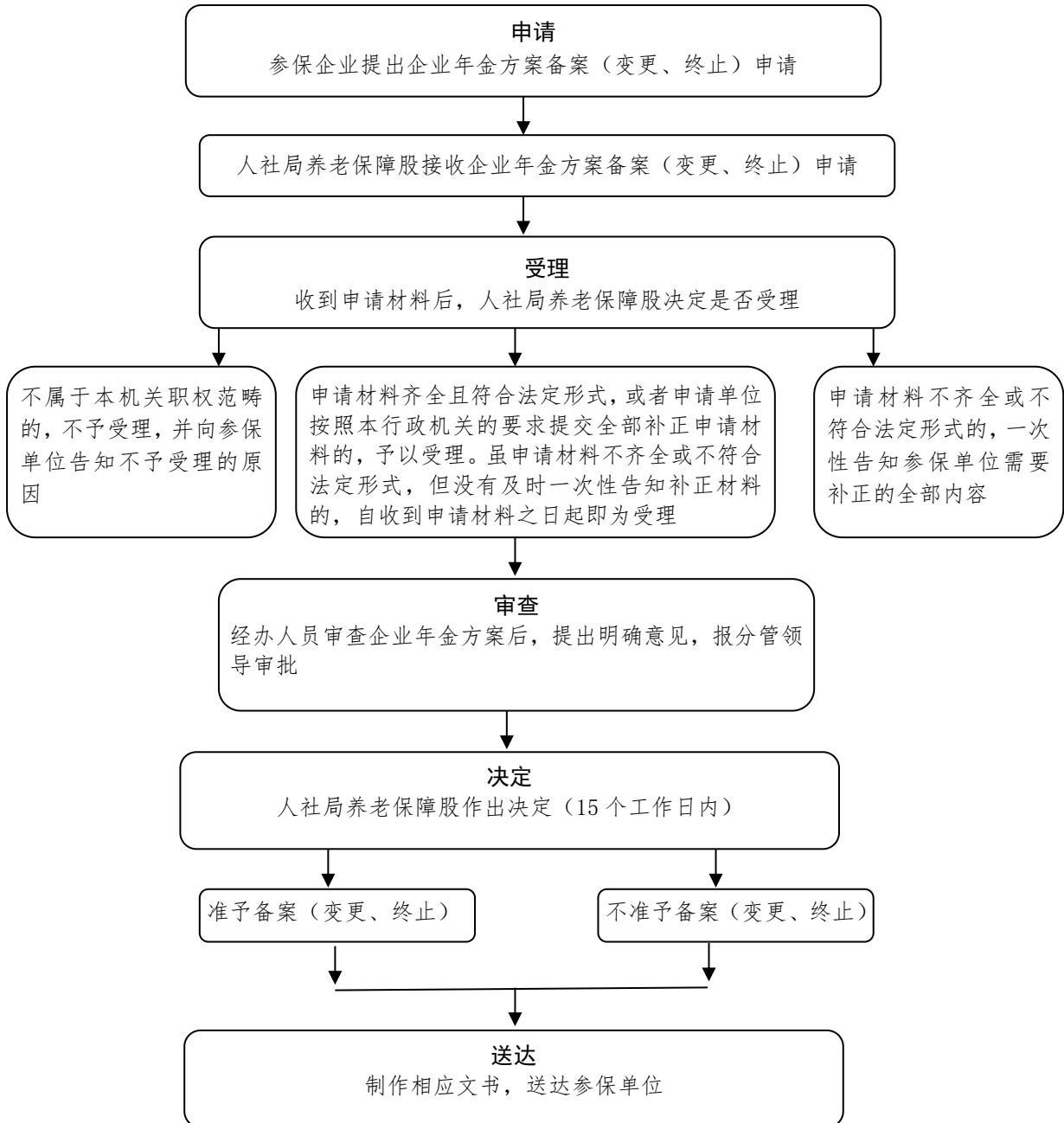
57.河南省工勤技能岗位等级考核网上报名审核流程图



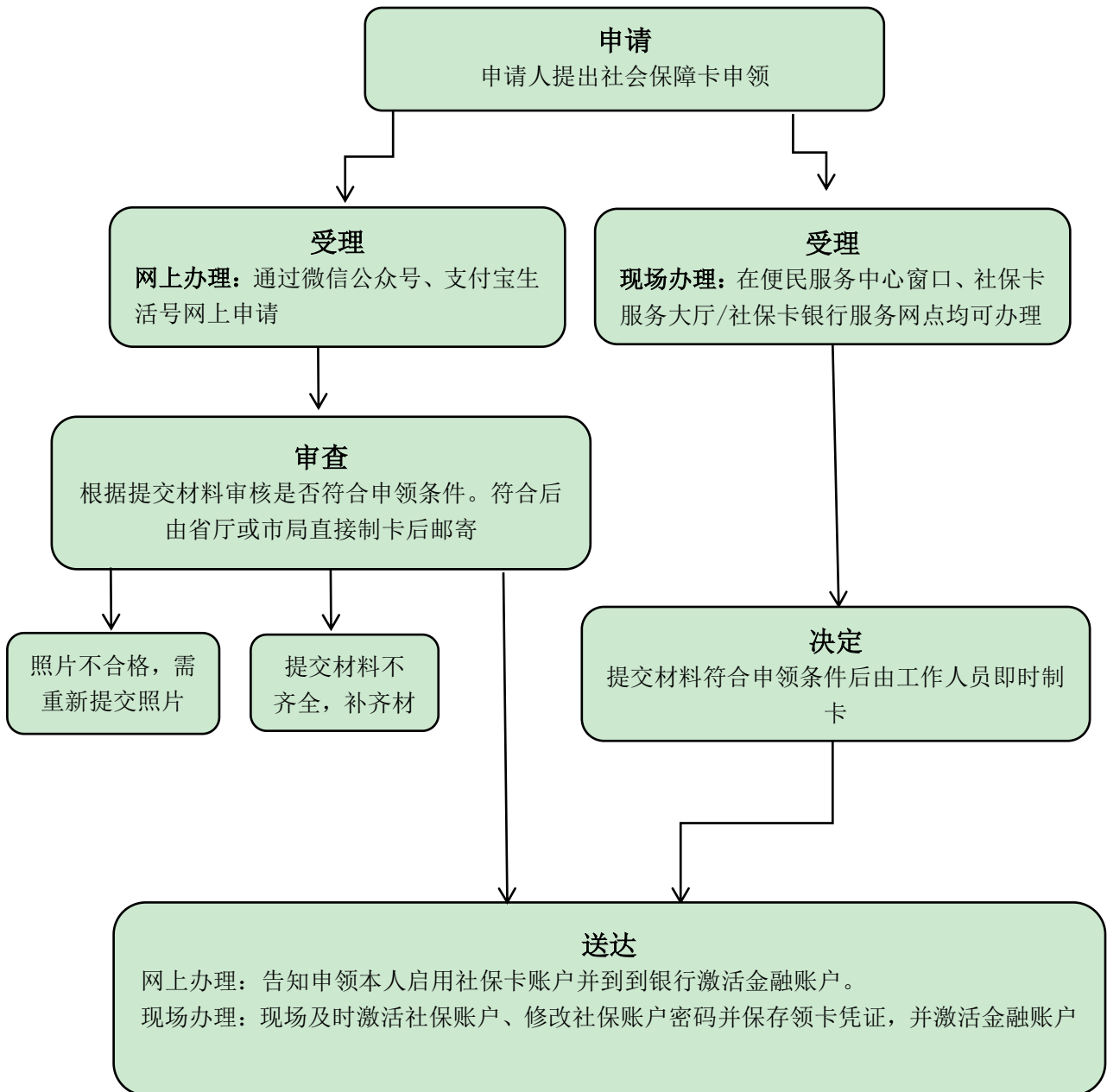
58. 市直工伤人员转诊转院审批流程图



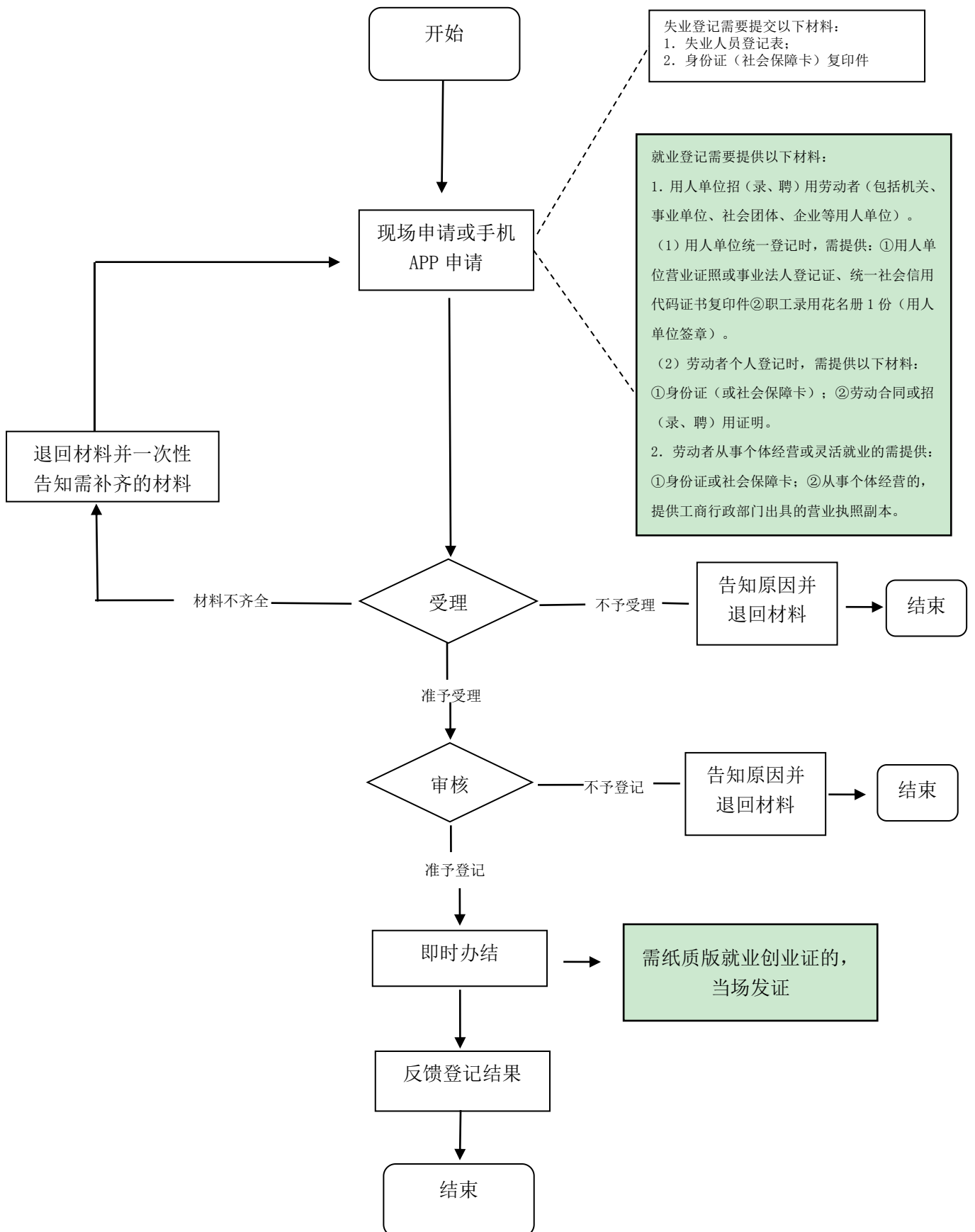
59.企业年金方案备案（方案变更、终止）流程图



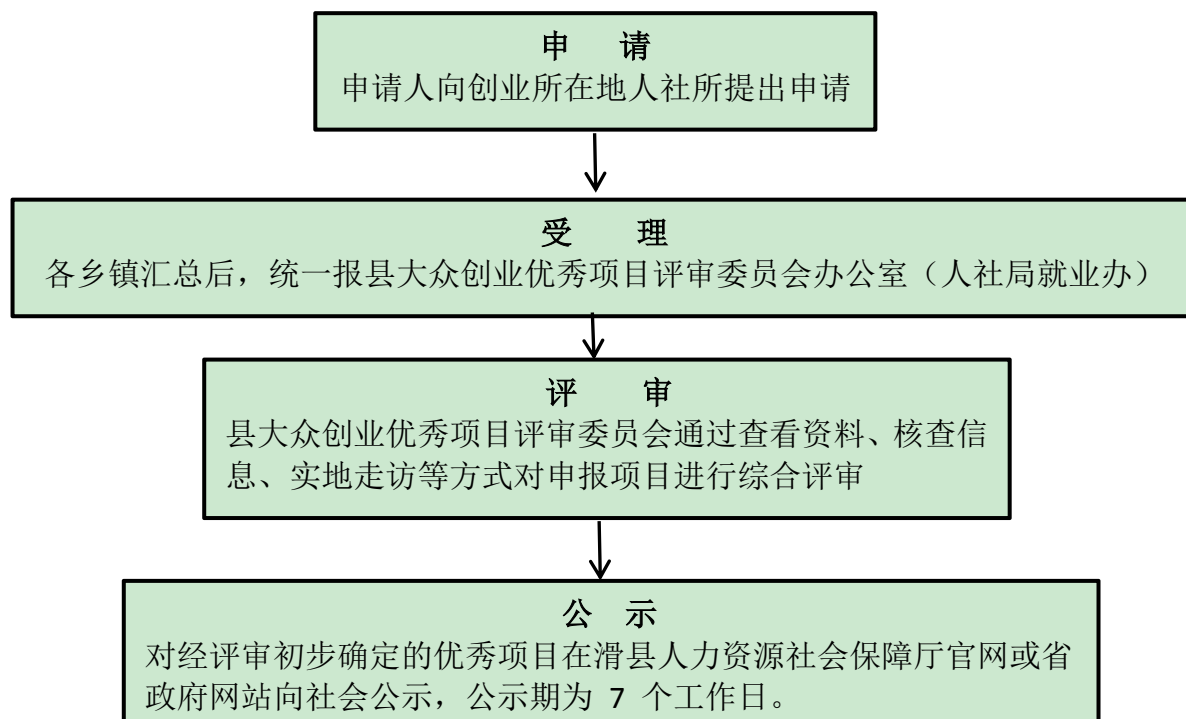
60. 社会保障卡申领流程图



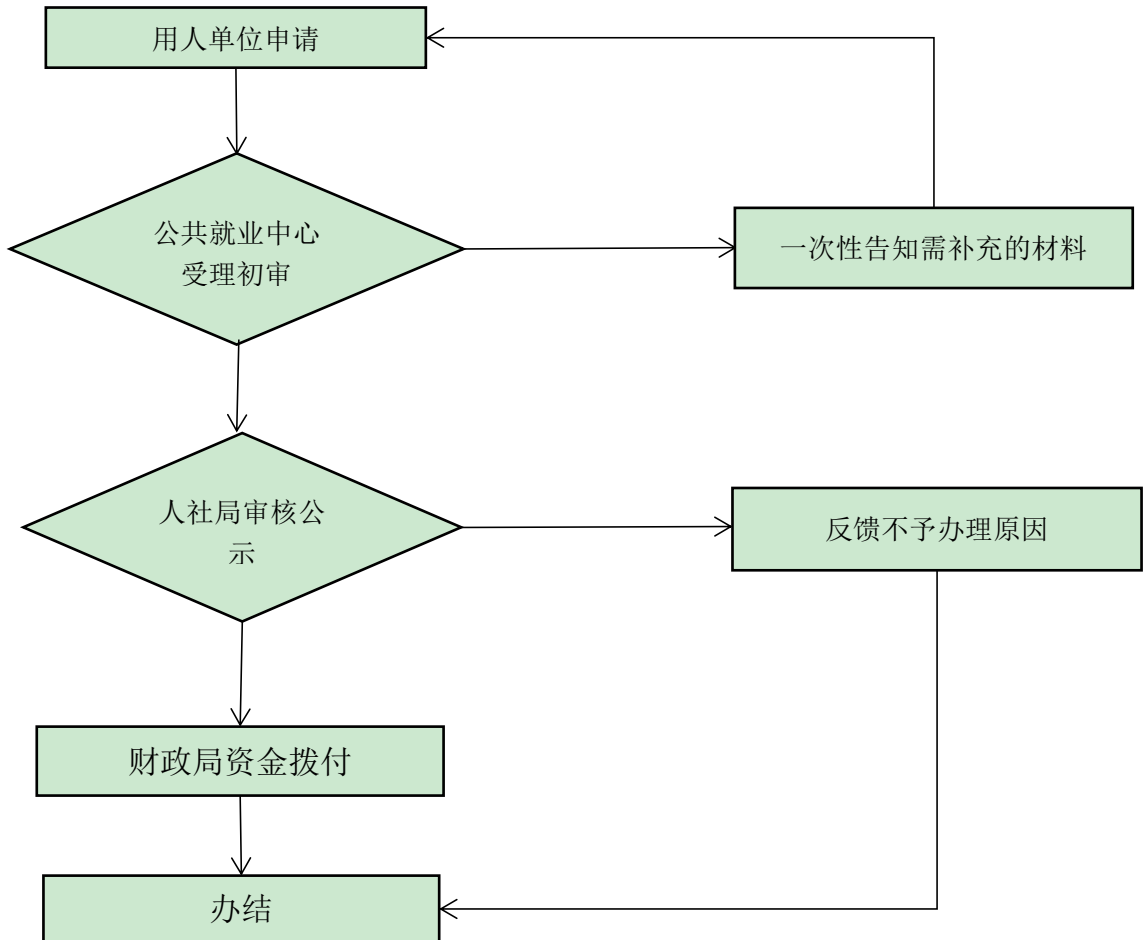
61. 就业失业登记和发证审批流程图



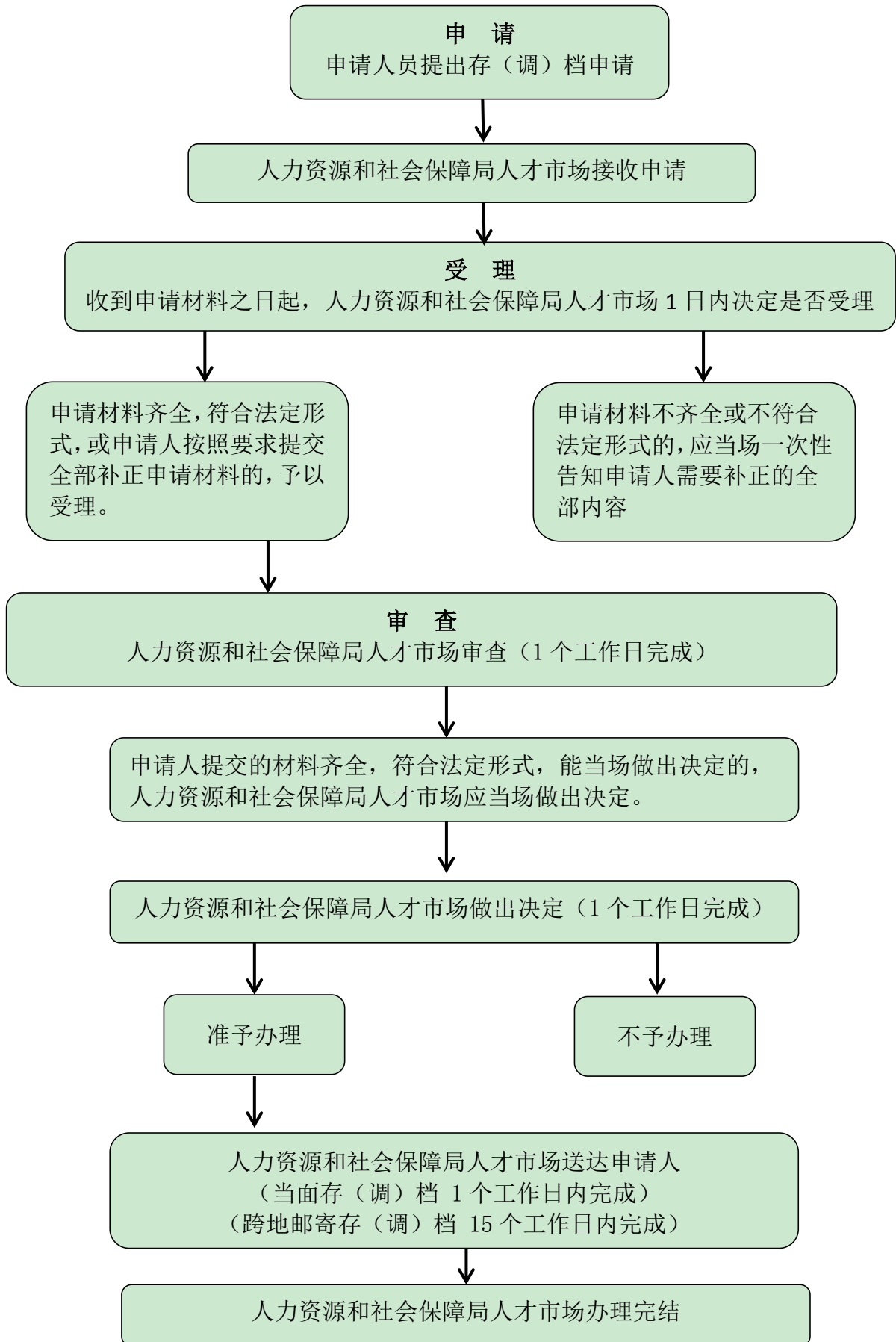
62.大众创业扶持项目审批流程图



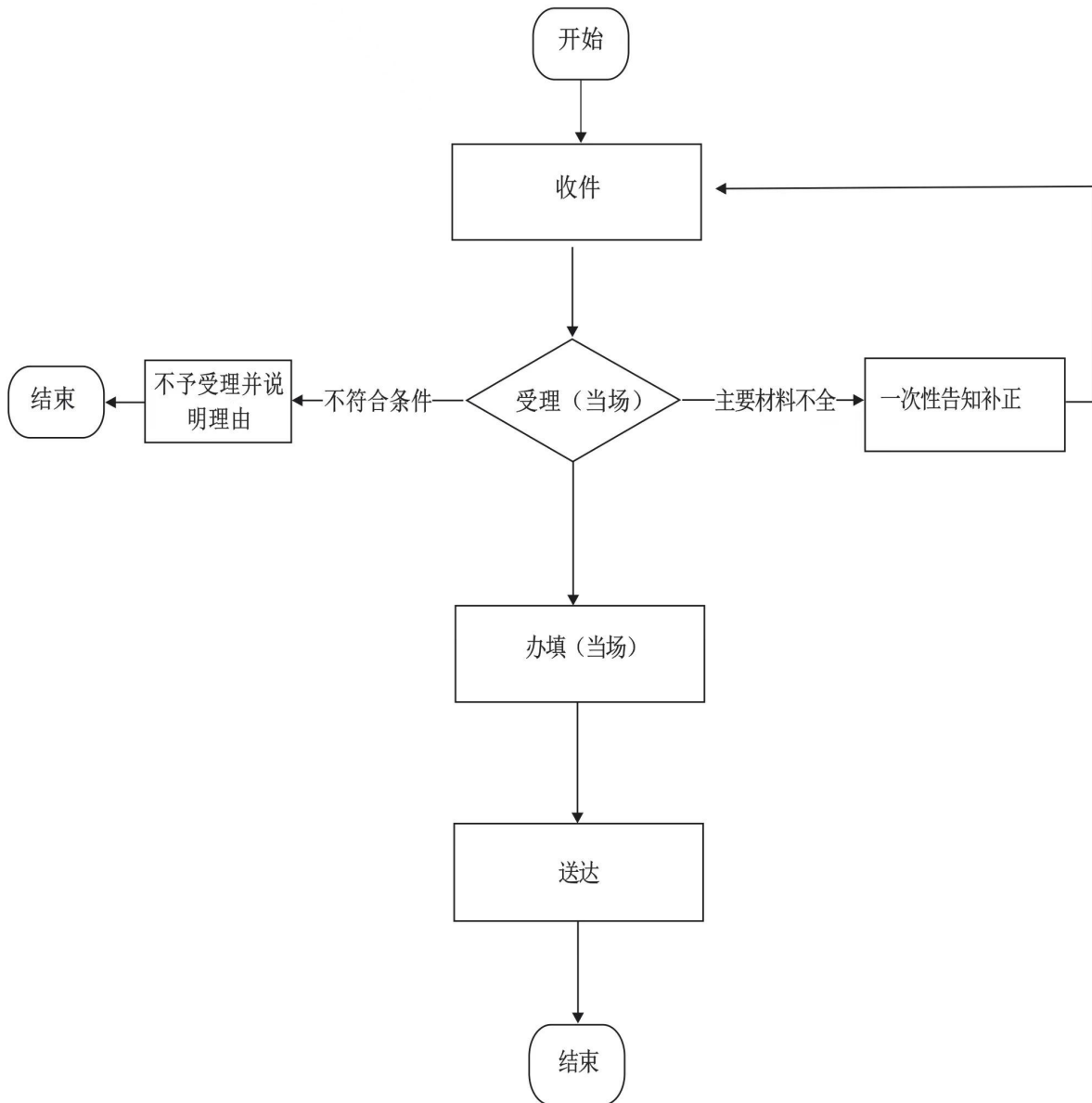
63.公益性岗位补贴申领审批流程图



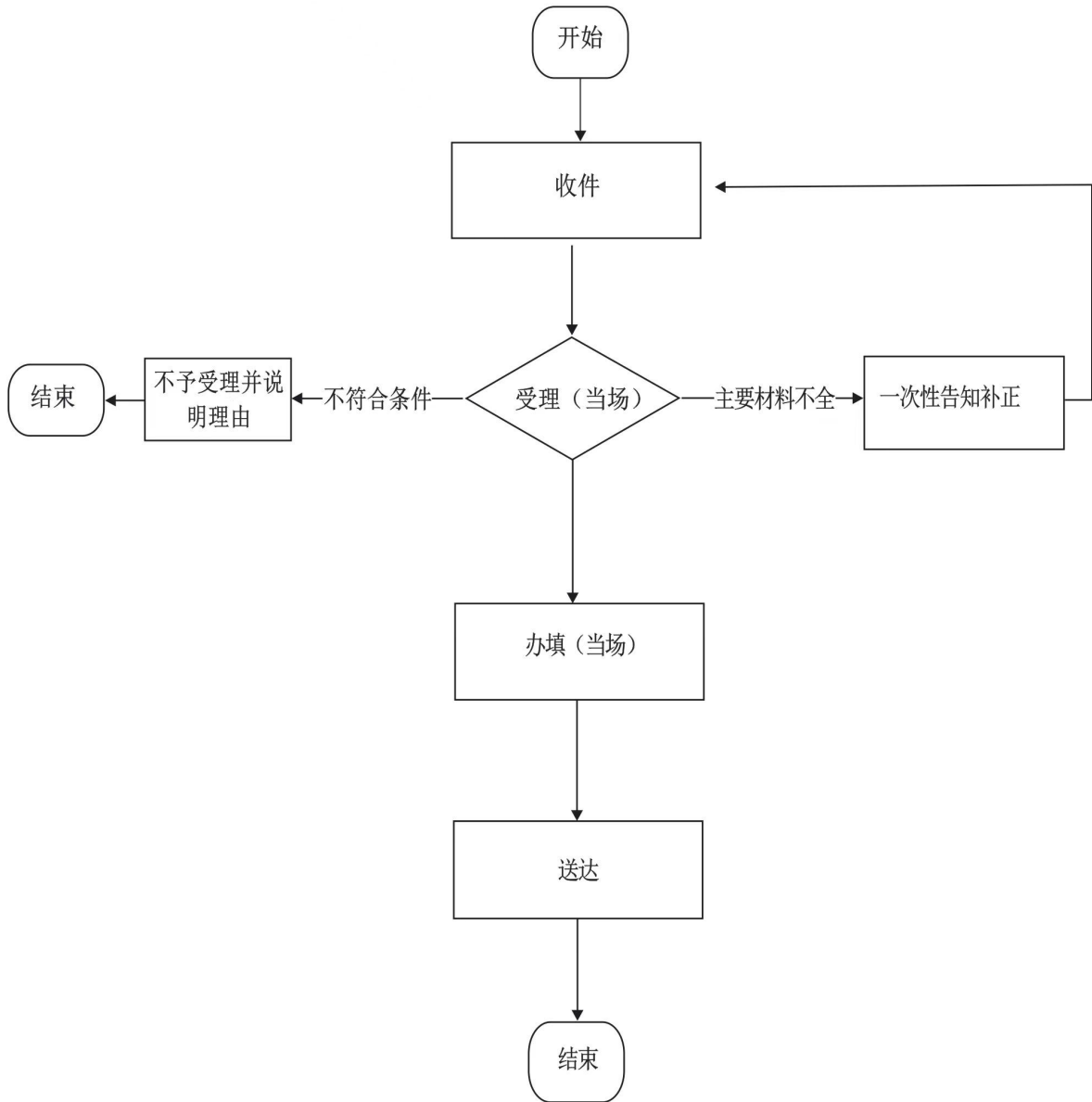
64.高等学校等毕业生接收手续办理审批流程图



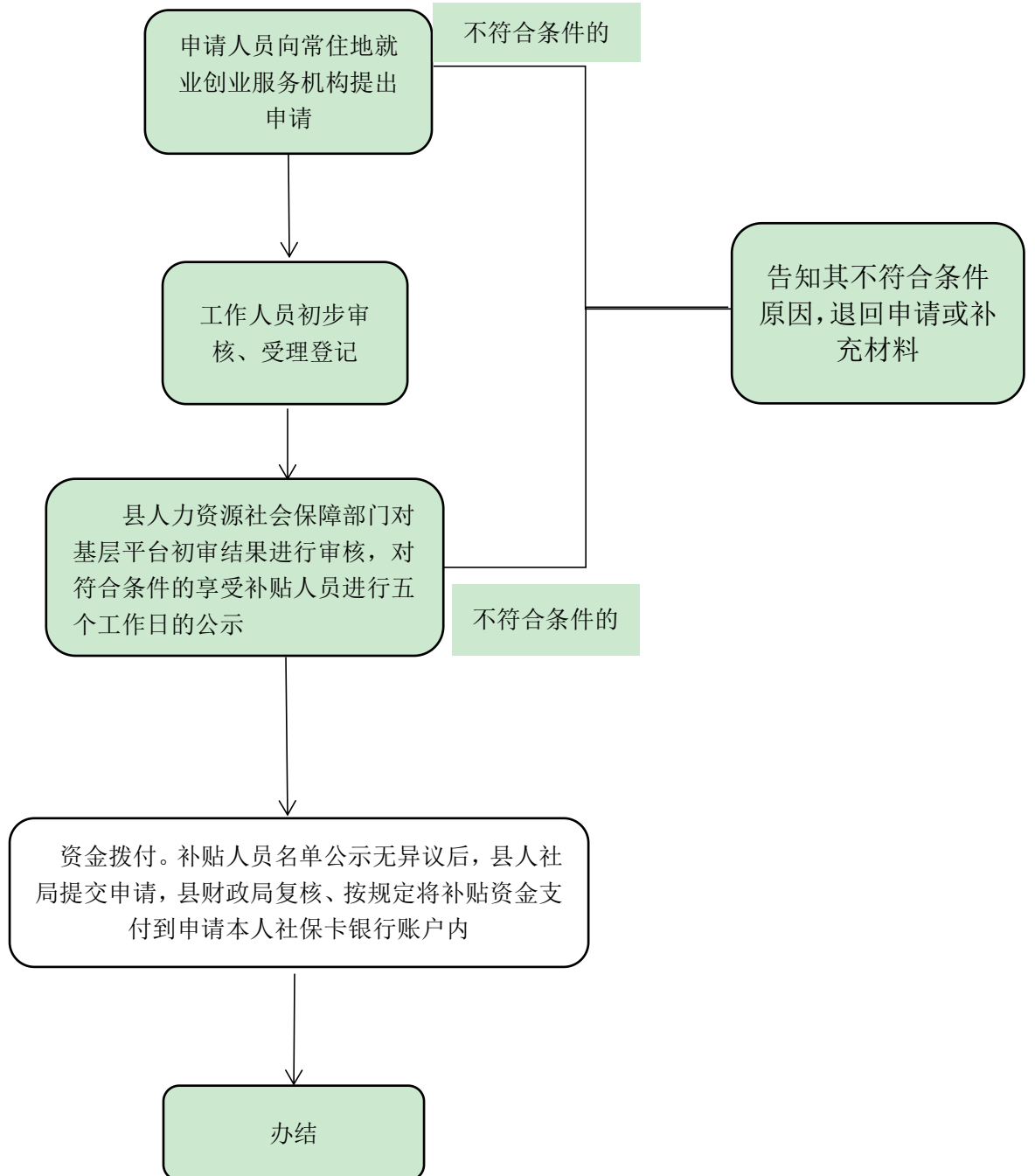
65.企业经济性裁员报告审批流程图



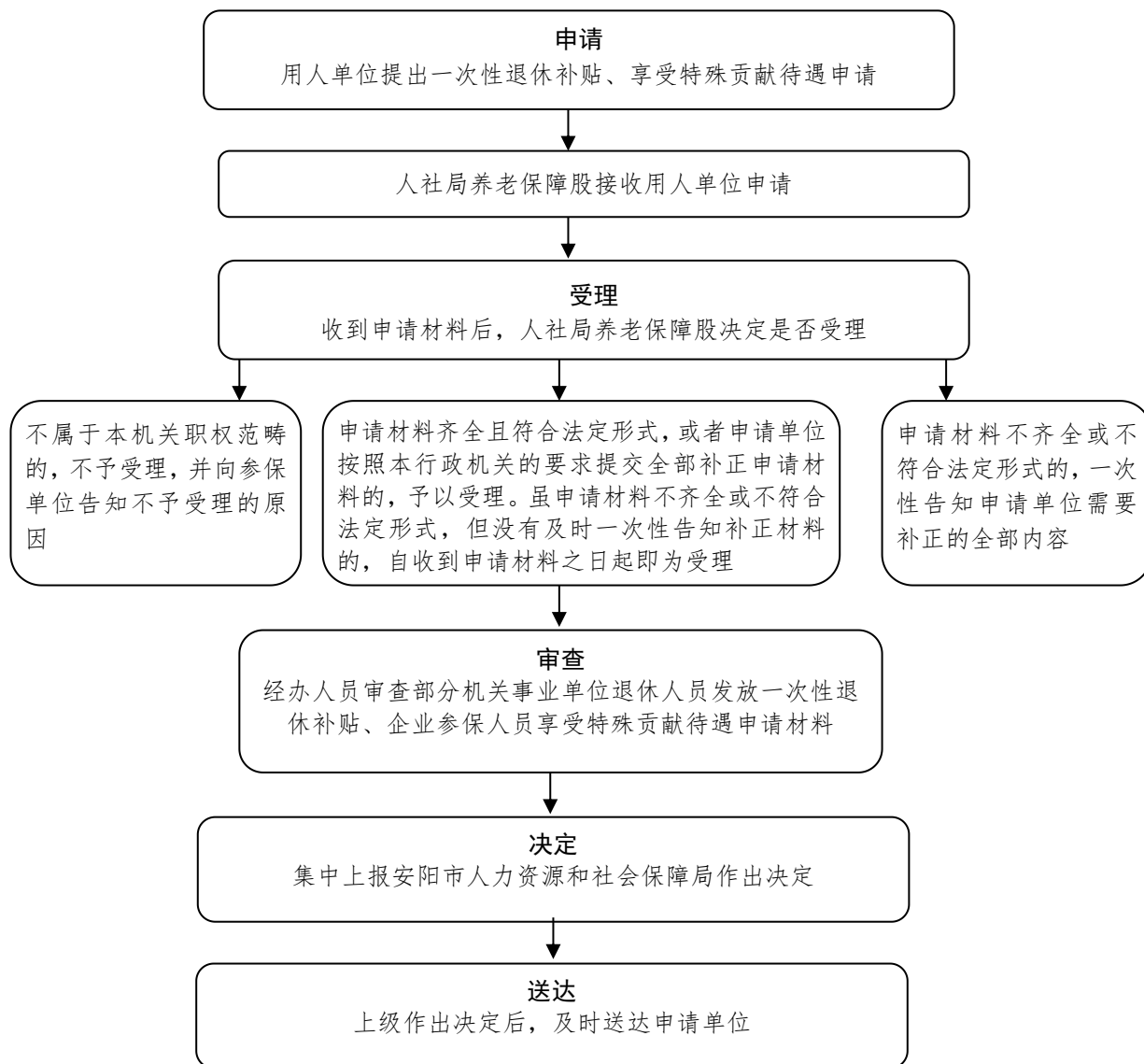
66. 录用未成年工登记备案流程图



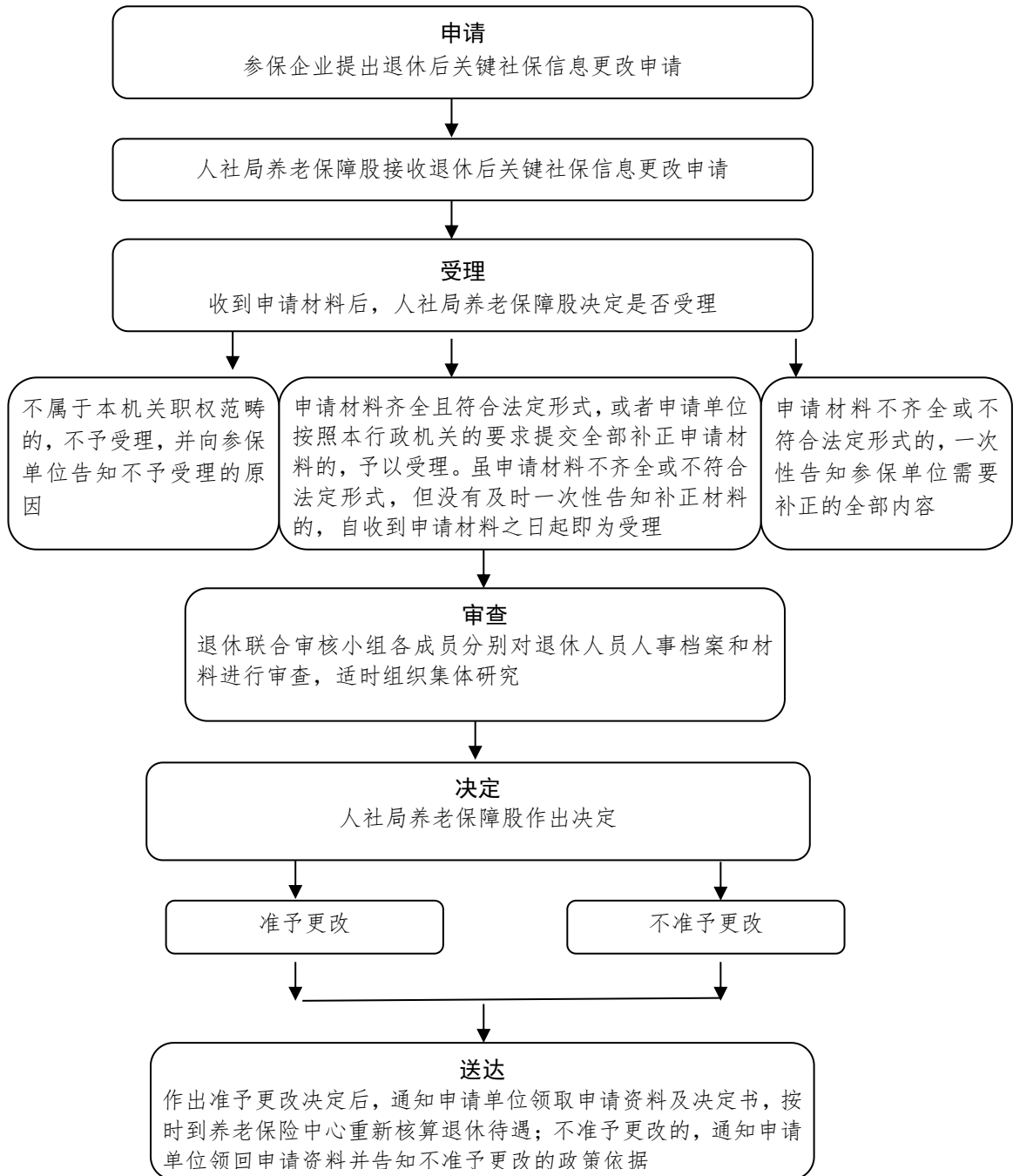
67.灵活就业人员社会保险补贴审批流程图



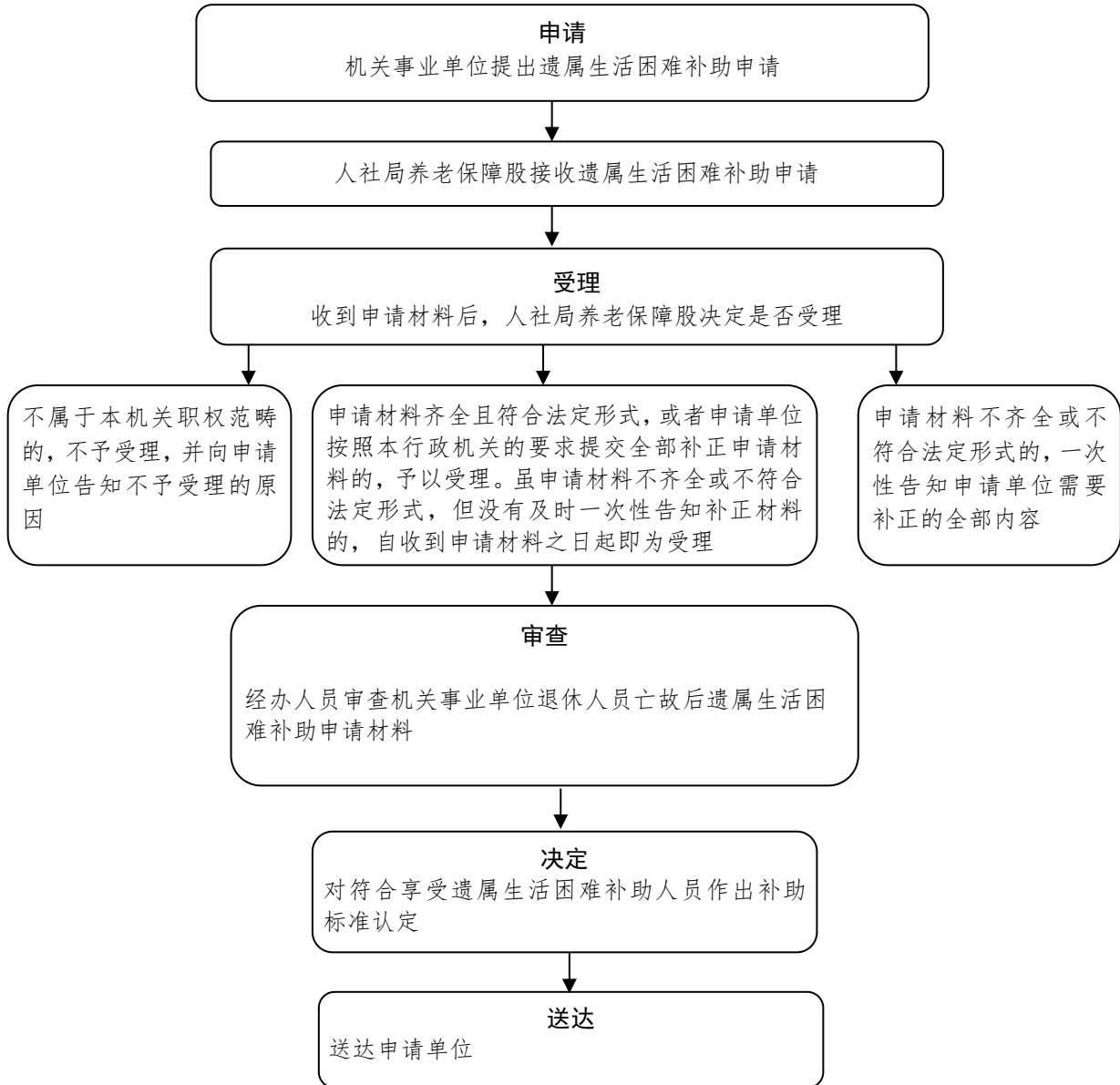
68、69.部分机关事业单位退休人员发放一次性退休补贴、企业参保人员享受特殊贡献待遇流程图



70.参保人员退休后关键社保信息更改流程图



71.机关、事业单位工作人员亡故后遗属生活困难补助流程图



72.机关事业单位工勤技能岗位四级（中级工）和五级（初级工）审批流程图

